

F/A-18 Hornet

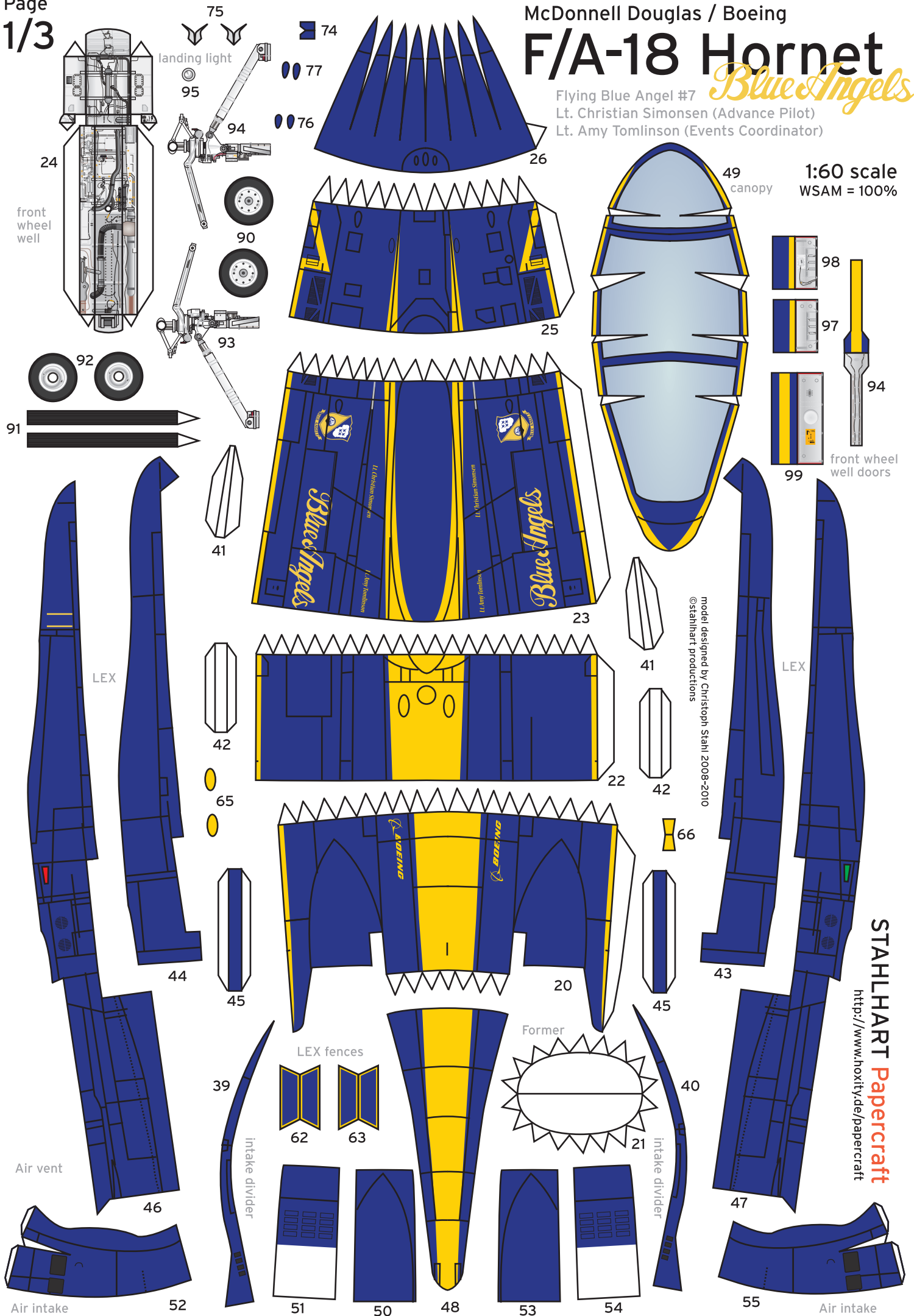
Blue Angels

Flying Blue Angel #7

Lt. Christian Simonsen (Advance Pilot)

Lt. Amy Tomlinson (Events Coordinator)

1:60 scale
WSAM = 100%



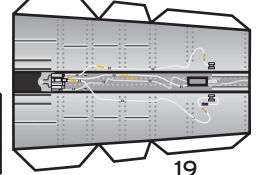
speedbrake

STAHLHART Papercraft
http://www.hoxity.de/papercraft

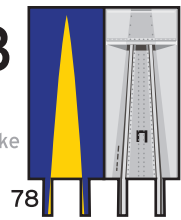
McDonnell Douglas / Boeing

engines

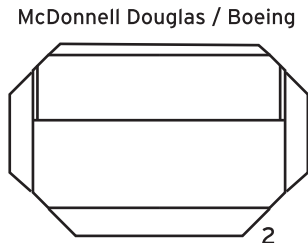
F/A-18 Hornet



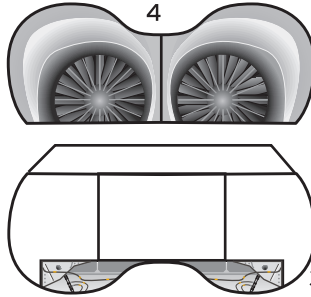
speedbrake bay



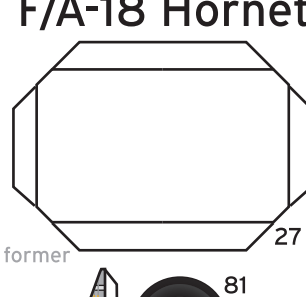
78



former



4



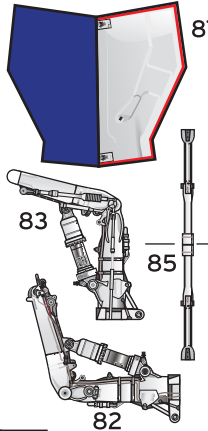
former



78a

speedbrake arm

78b



87



81

main wheel well



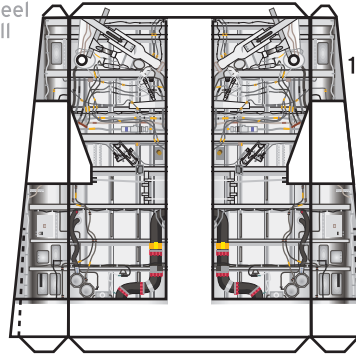
79



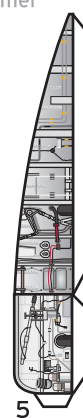
80



6



1



5



81



79

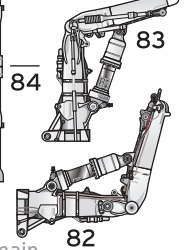


7



80

84



82

main landing gear



88



↑



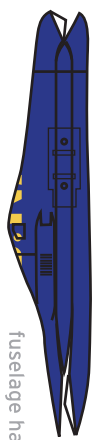
89



↑

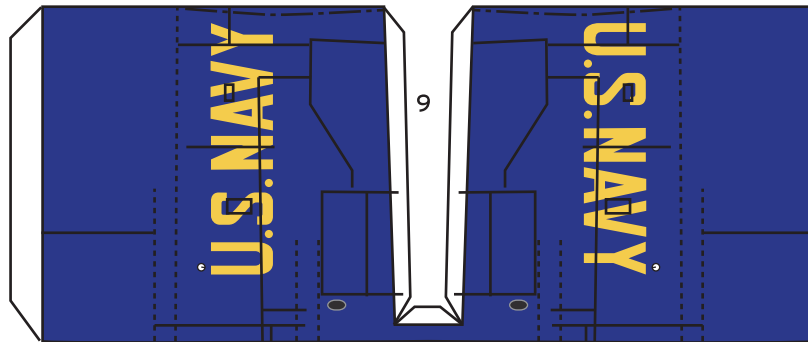
↓

main landing gear



fuselage hardpoint

68

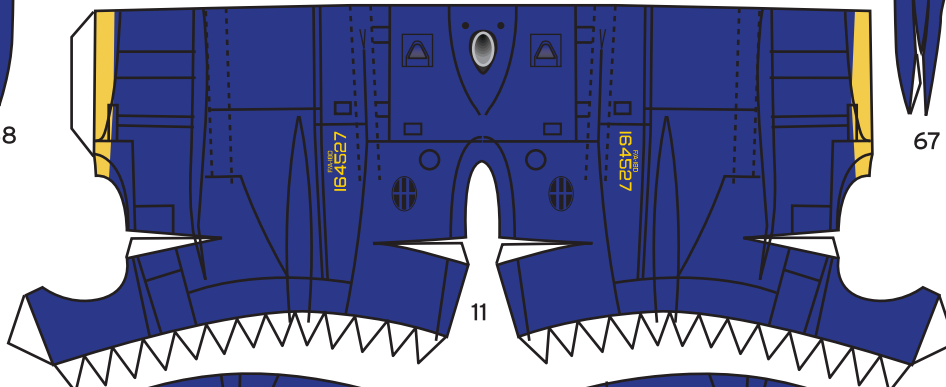


9

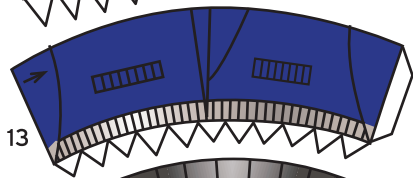


67

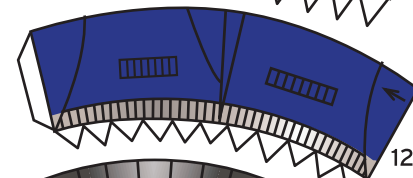
fuselage hardpoint



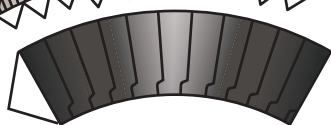
11



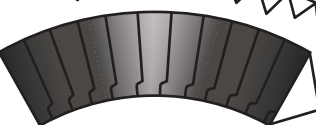
13



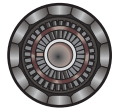
12



16



16



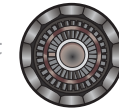
15

exhaust

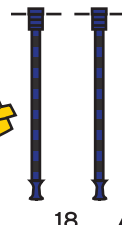


14

exhaust



15

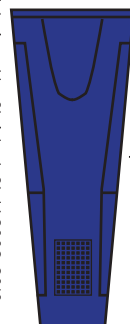


18

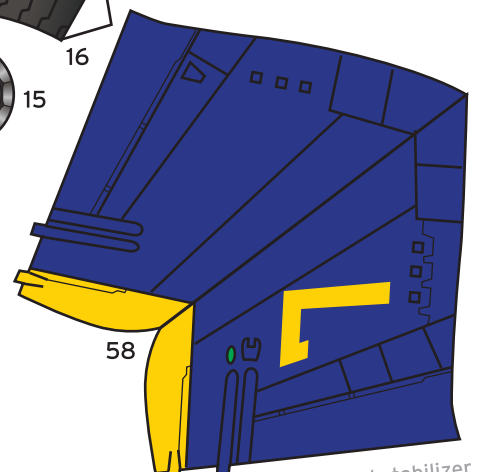
arrestor hook



16



10



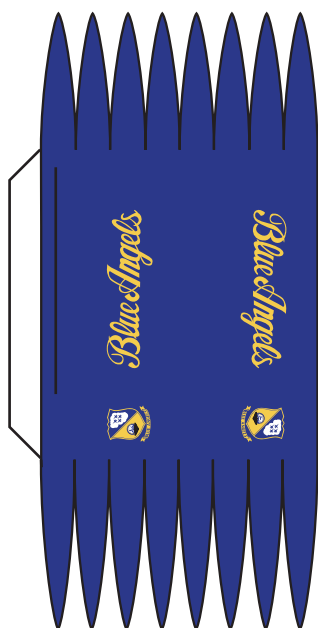
model designed by Christoph Stahl 2008-2010
©stahlhart productions

starboard vertical stabilizer

port vertical stabilizer



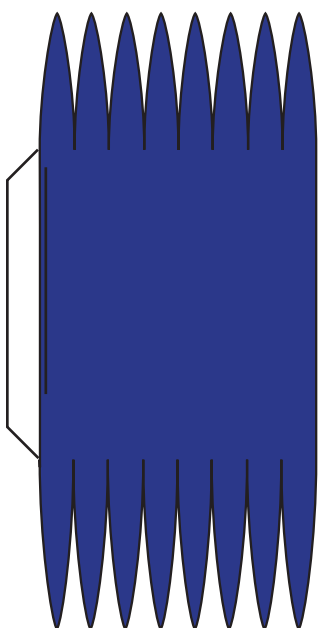
centerline drop tank



121

front

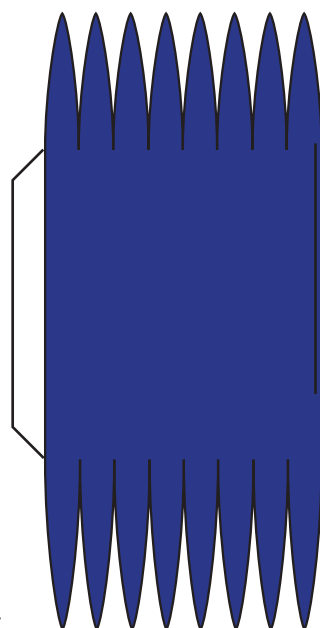
inner wing drop tank



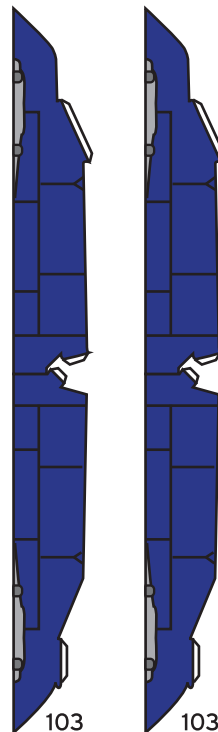
121

front

inner wing drop tank



Inner wing hardpoints



103

103

designed by Christoph Stahl 2010
©stahlhart productions

102



outer wing
hardpoints

102



centerline hardpoint



104

F/A-18 Hornet **External Stores**