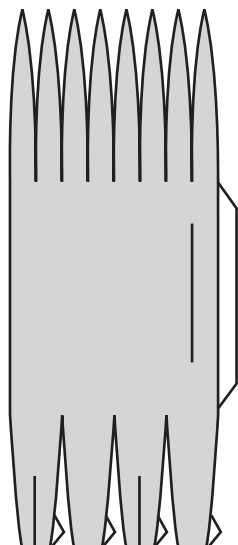


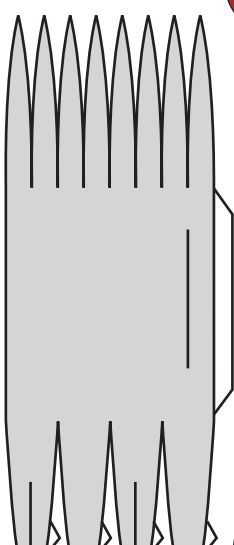


# SAAB J35 DRAKEN

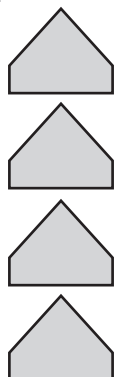
Swedish Air Force  
as displayed  
in Le Bourget museum



Drop Tanks

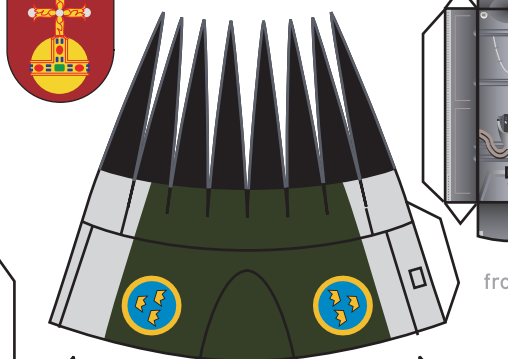


Drop  
Tank  
rear



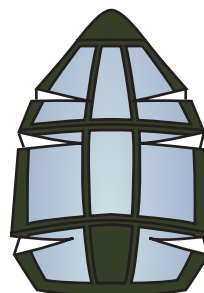
Drop tank  
fins

hardpoints



front wheel well

Canopy



wheel  
tread



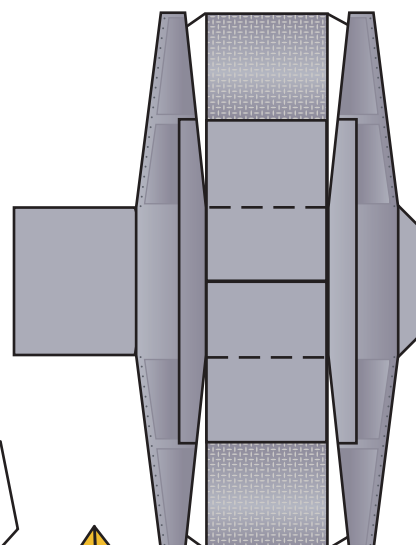
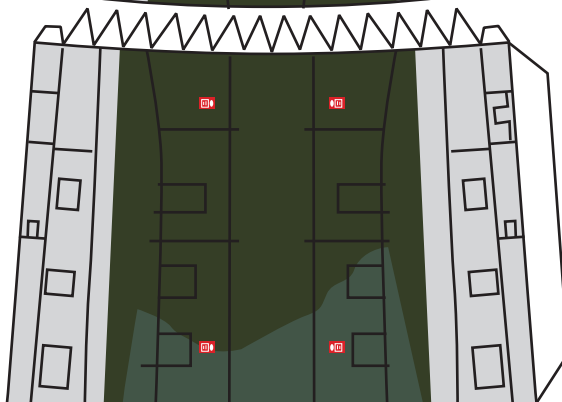
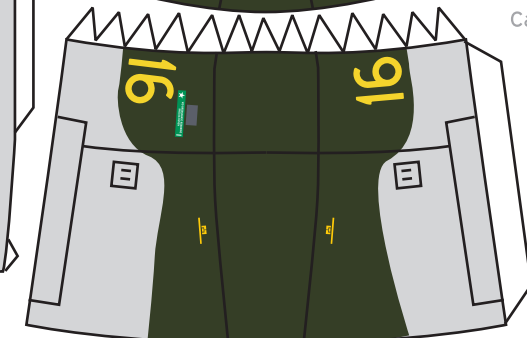
forward  
landing  
gear



(detailed)



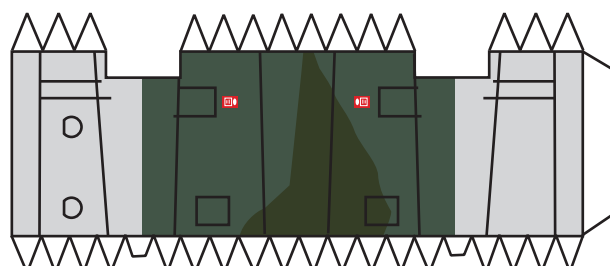
(simplified)



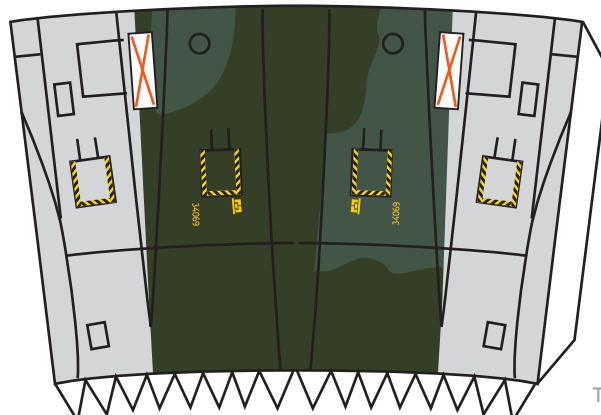
main  
wheel  
well



fin



main  
wheel  
well



Tail

Tail  
antenna

front landing  
gear doors



fin



details



SAAB J35

DRAKEN

landing gear  
inner door

landing gear  
inner door

landing gear  
inner door

landing gear  
inner door

main  
landing  
gear

main  
landing  
gear

wheel  
tread

landing  
light

wheel  
tread

landing  
light

coolers

tailwheels  
(optional)

tailwheel  
bulge

wing  
detail

inner jet exhaust

outer jet exhaust

model designed by Christoph Stahl 04-2009  
©stahlhart productions

STAHLHART Papercraft

<http://www.hoxity.de/papercraft>