



# SAAB J35 DRAKEN

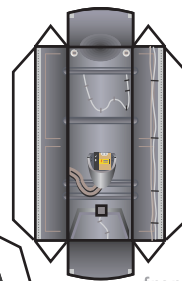
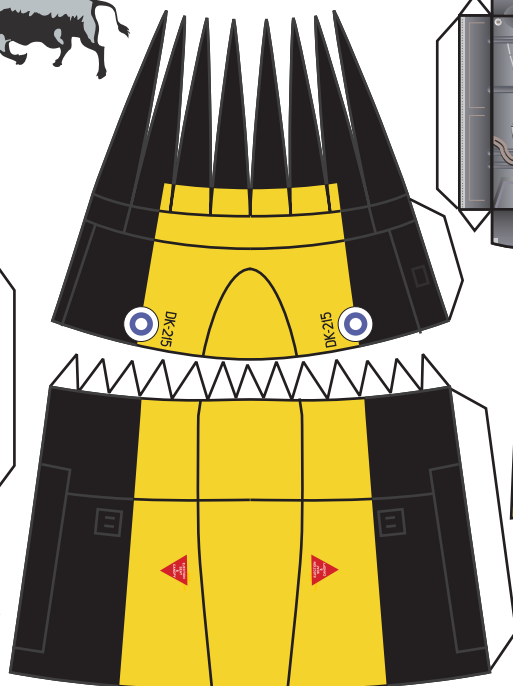
Finnish Air Force, 2000



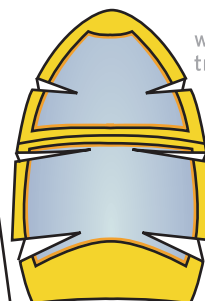
Drop Tanks



Drop Tank rear



front wheel well



Canopy

wheel tread



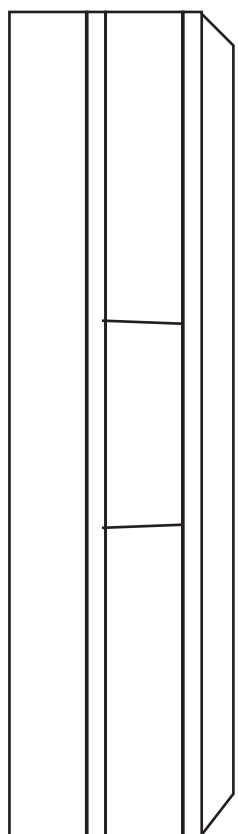
forward landing gear



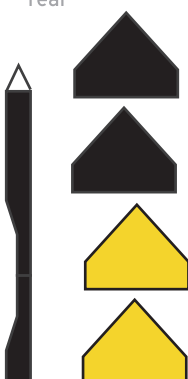
(detailed)



(simplified)

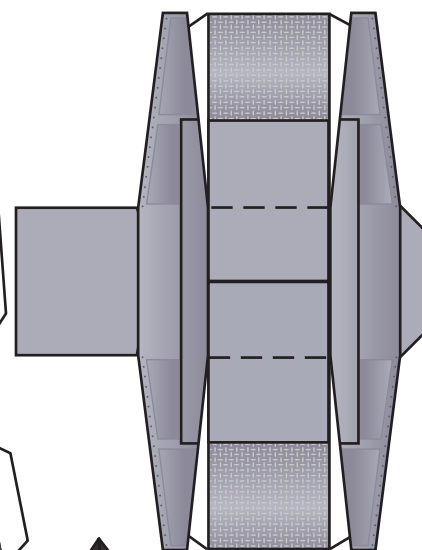
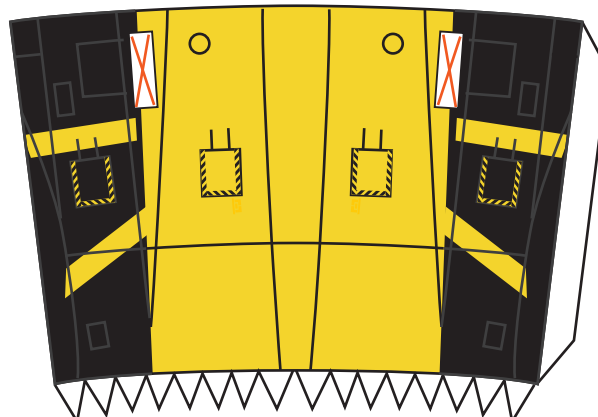
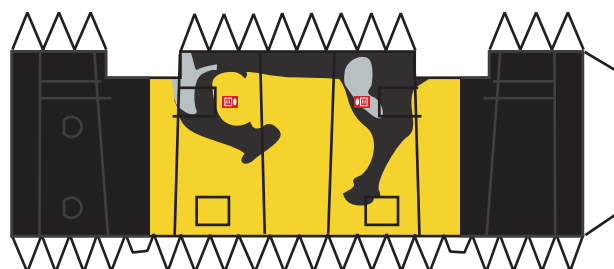
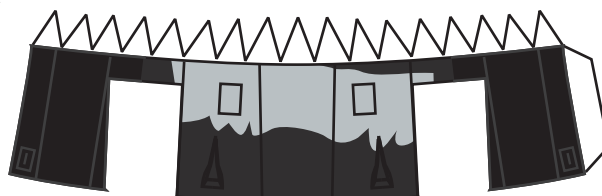
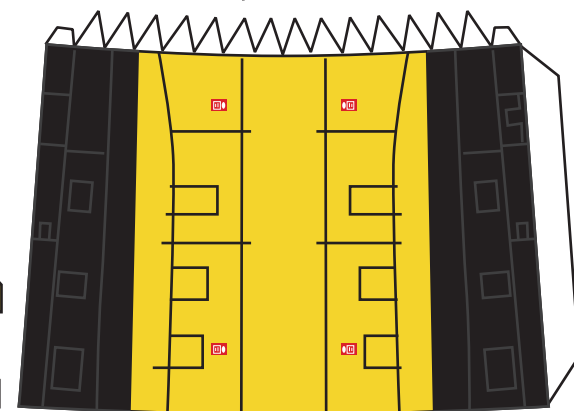


wing stabilizer



Drop tank fins

hardpoints



main wheel well



fin



main wheel well



Tail



Tailrider

front landing gear doors



fin



details



Tail

SAAB J35

DRAKEN

