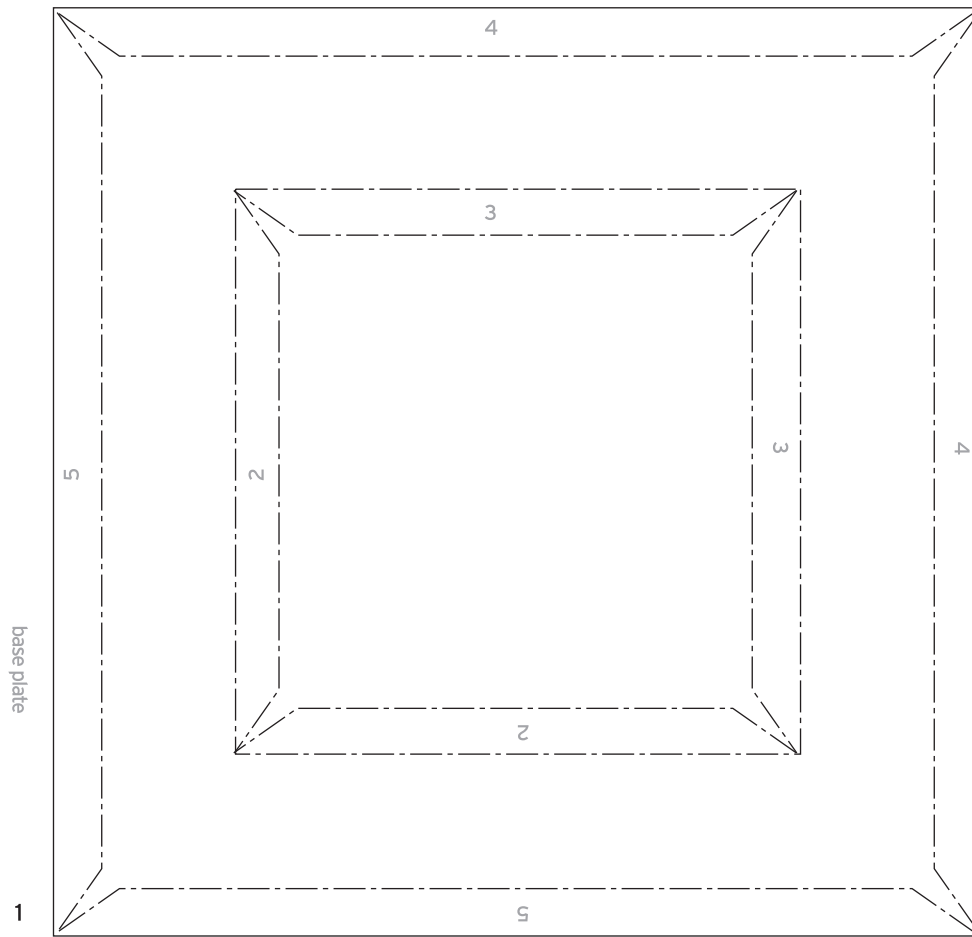
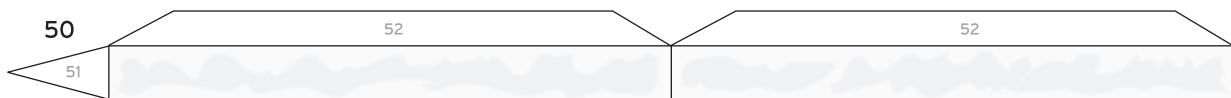
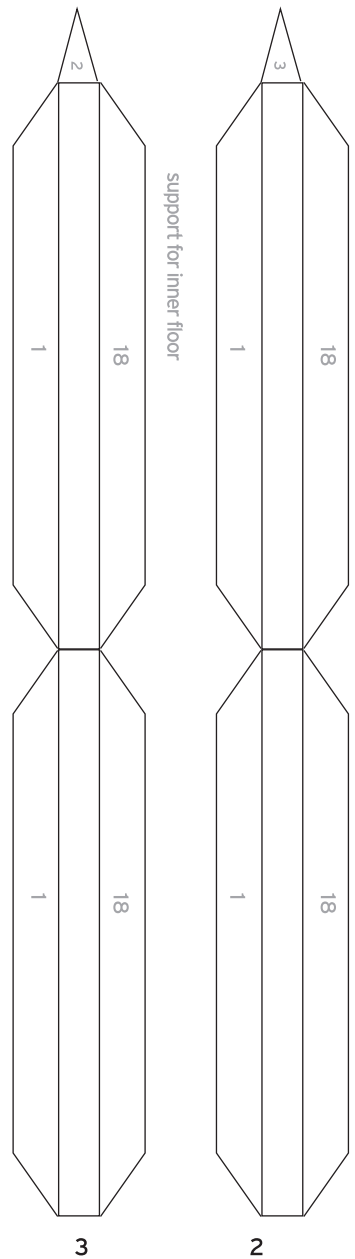
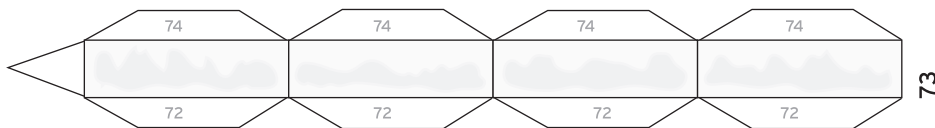


## TIBETAN STUPA

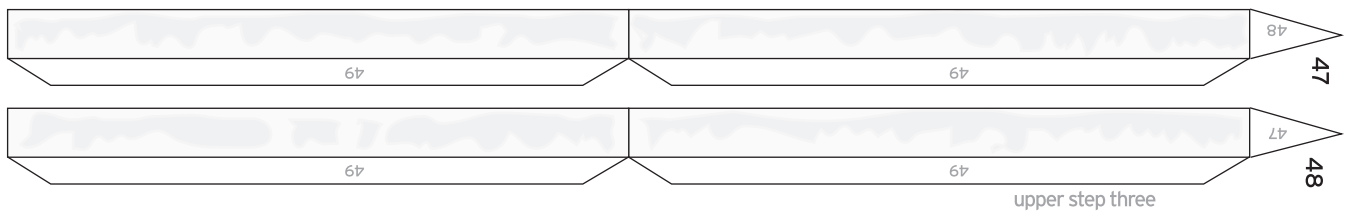
1:50 scale

model designed by Christoph Stahl 2017-2018  
© stahlhart productions

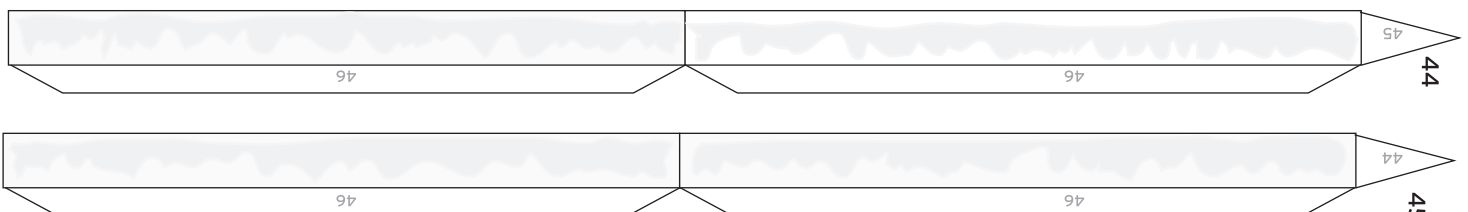
harmika upper part



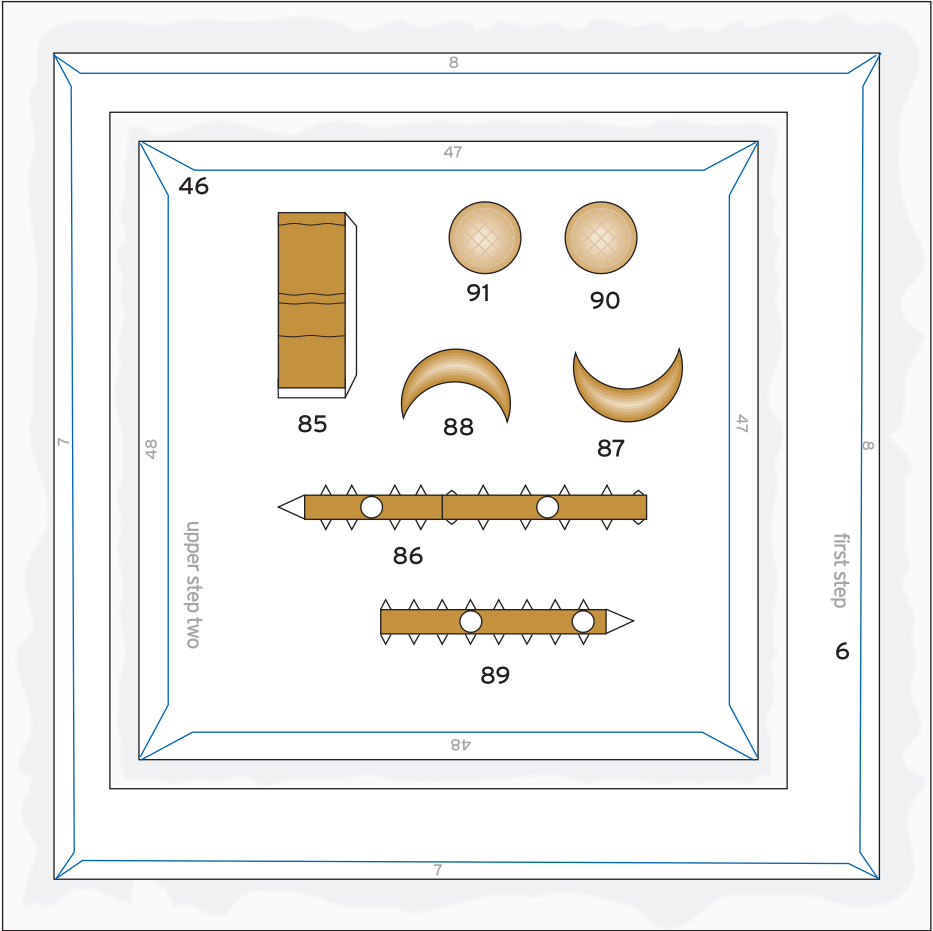
upper step four



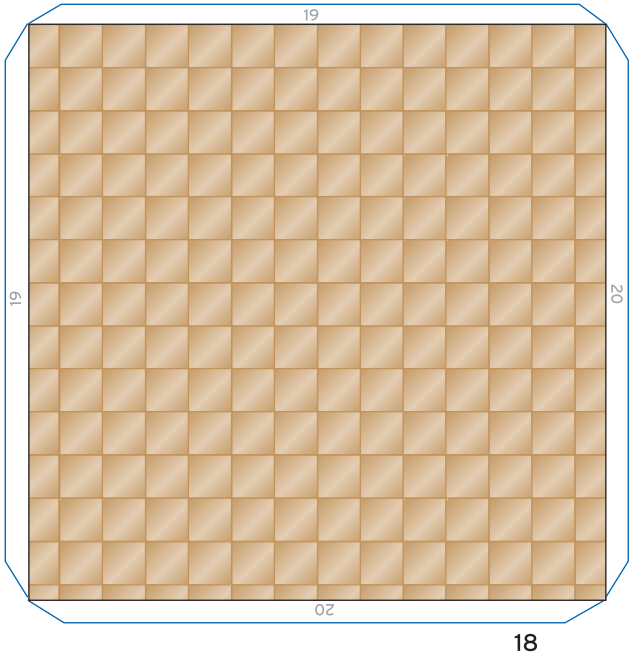
upper step three



upper step two



# TIBETAN STUPA



inner floor

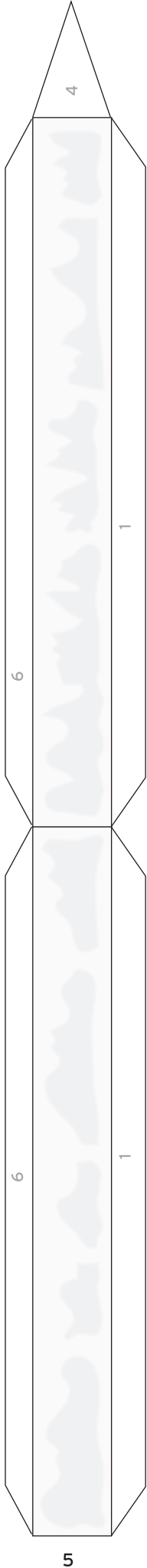
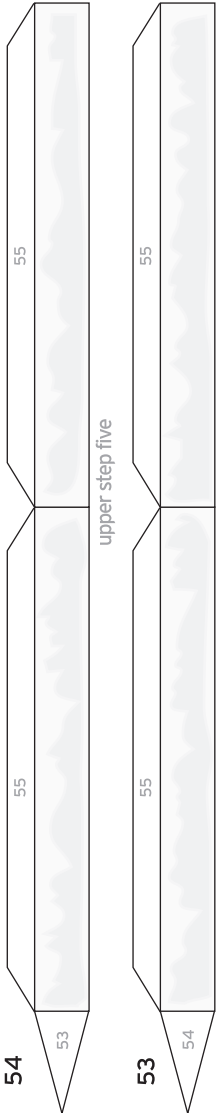


80

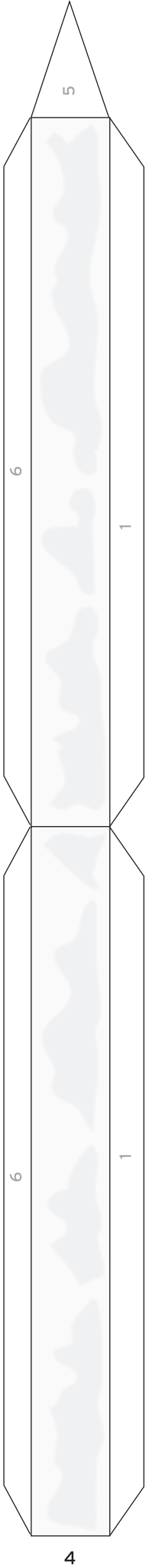
model designed by Christoph Stahl 2017-2018  
©stahlhart productions

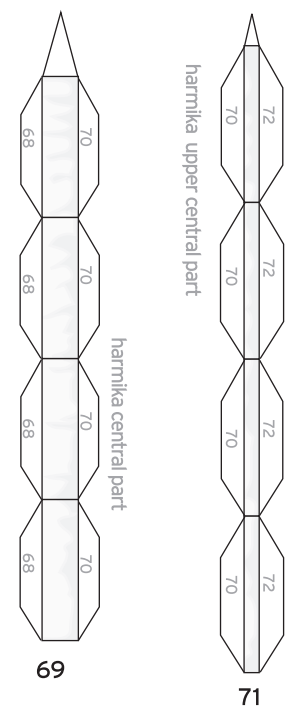
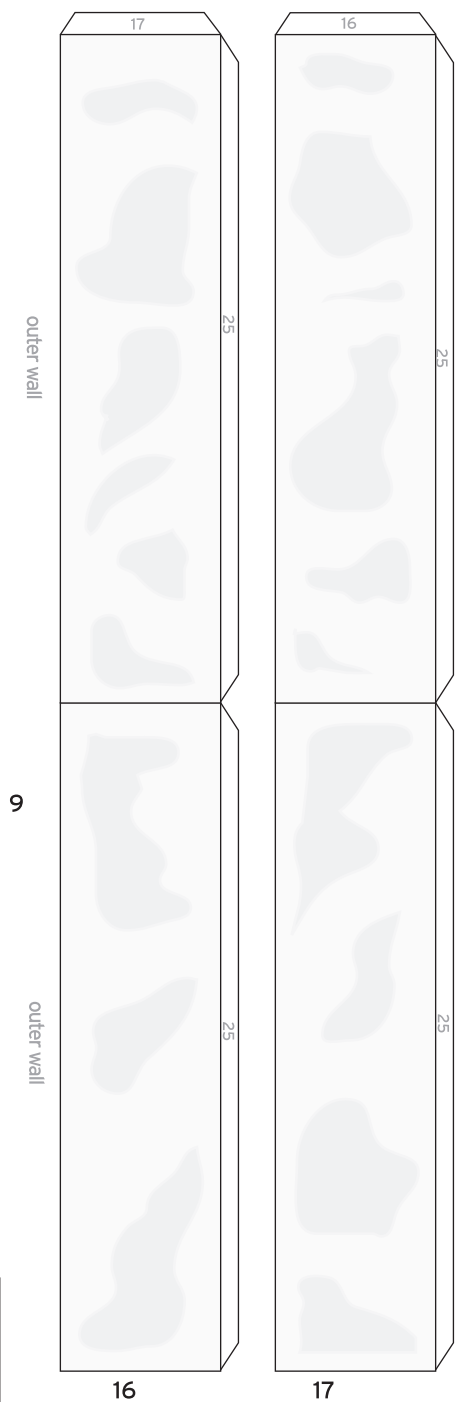
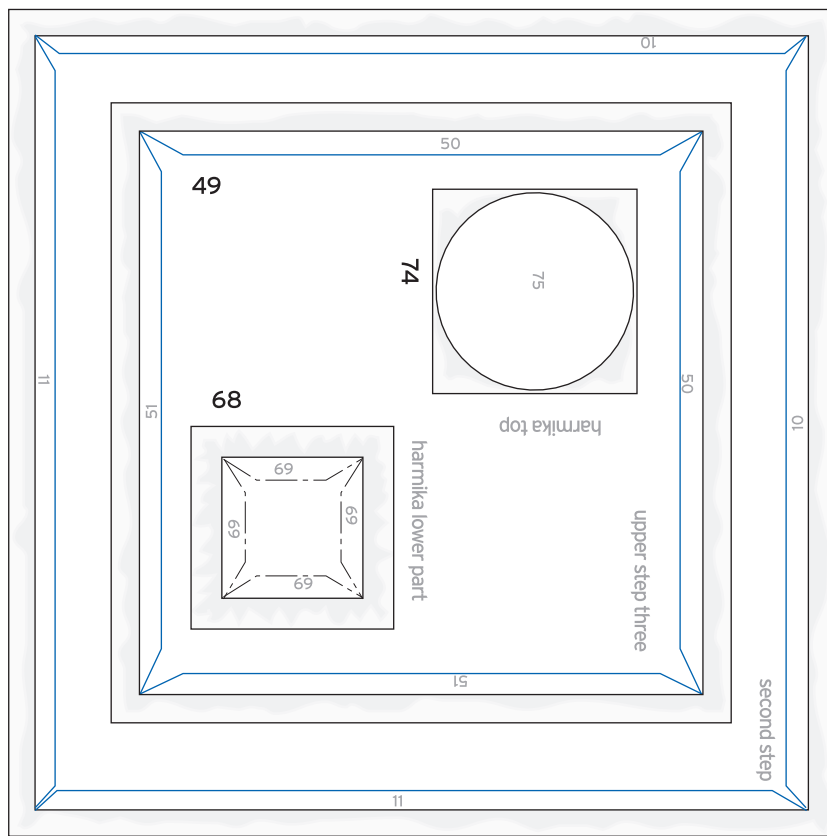


78

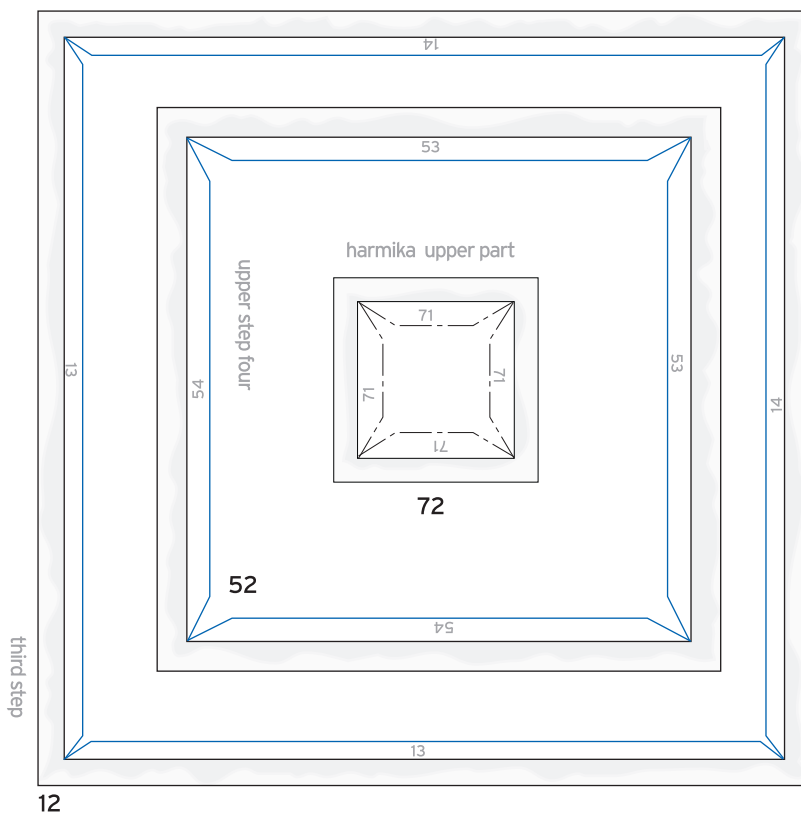


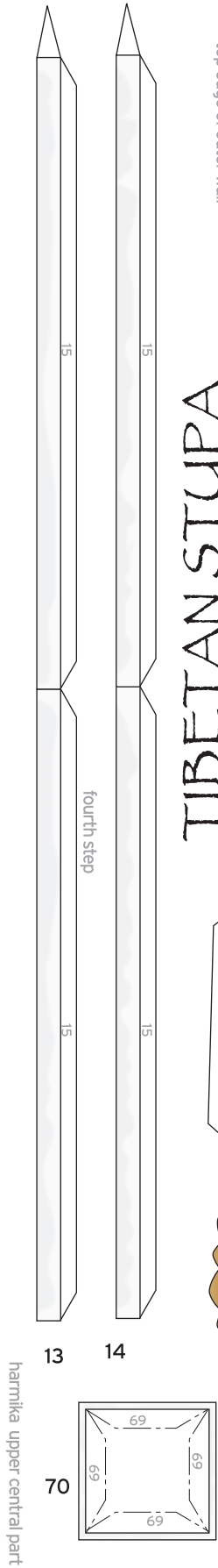
first step



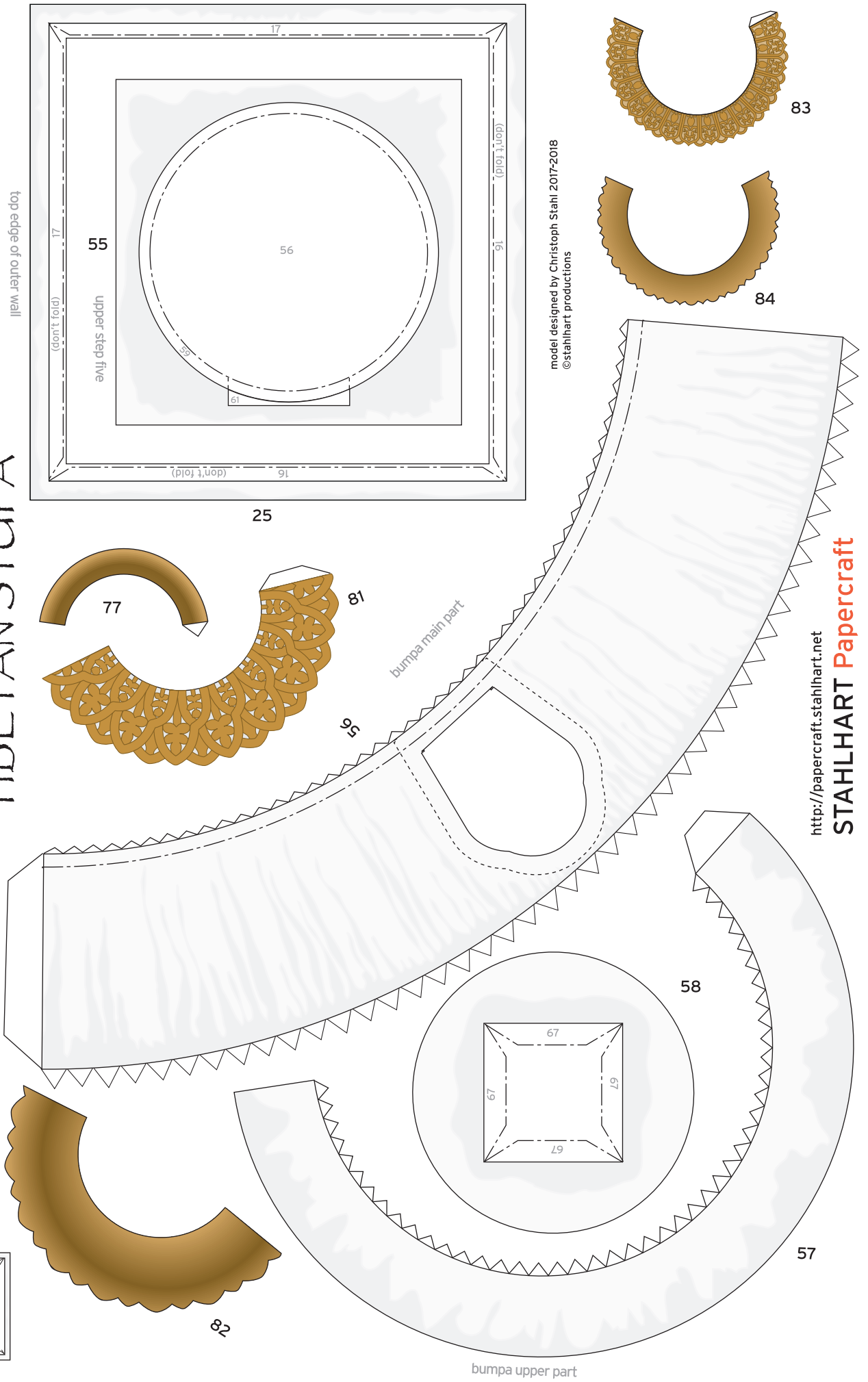


model designed by Christoph Stahl 2017-2018  
©stahlhart productions



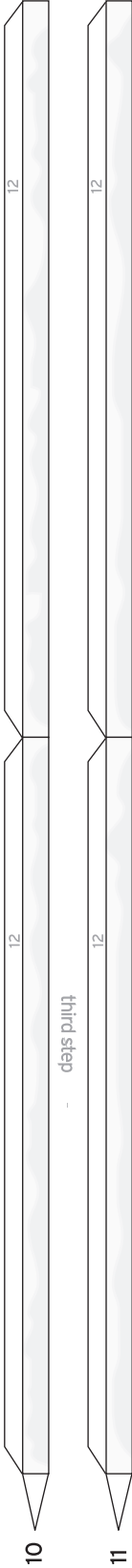
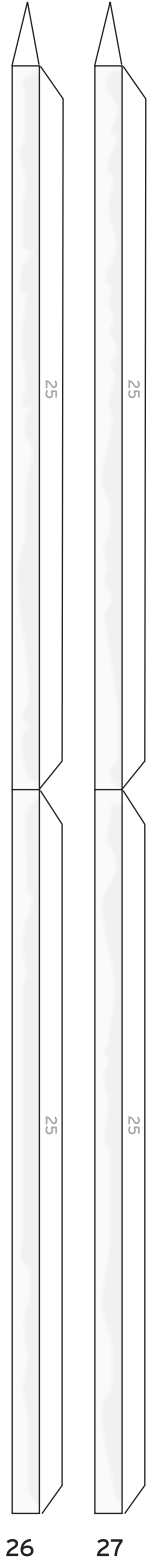


# TIBETAN STUPA

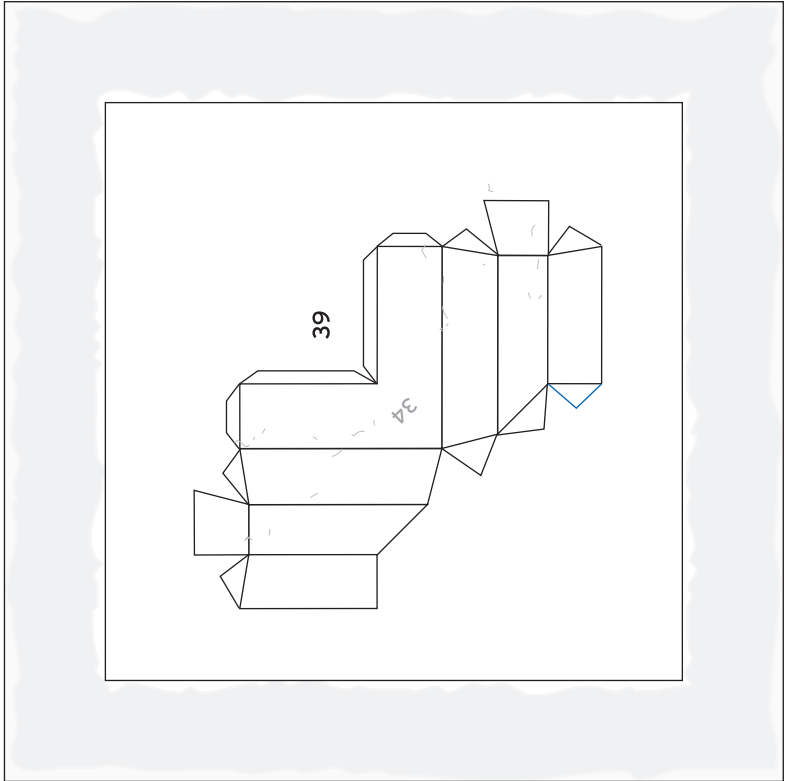


# TIBETAN STUPA

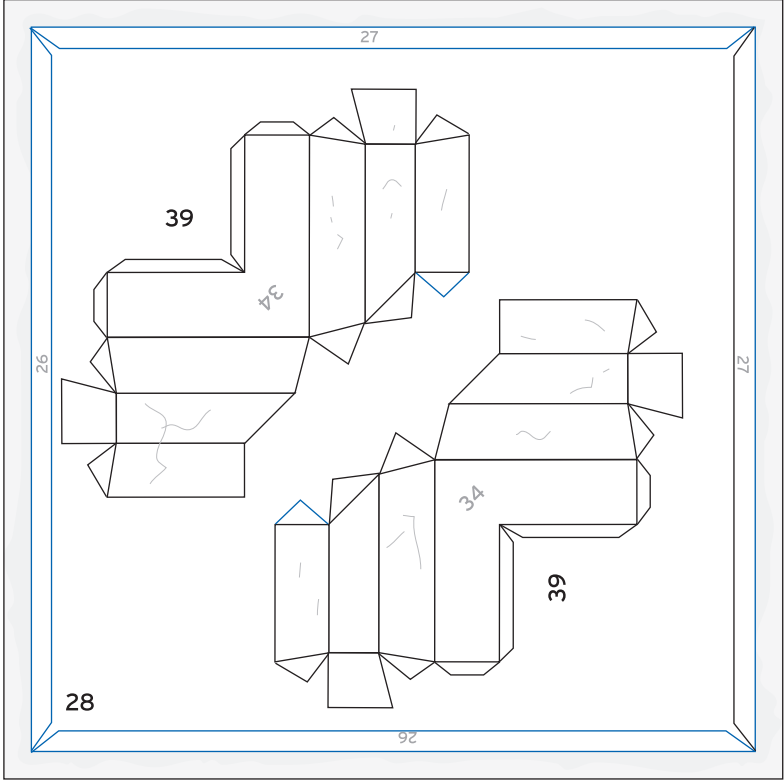
first step back



third step

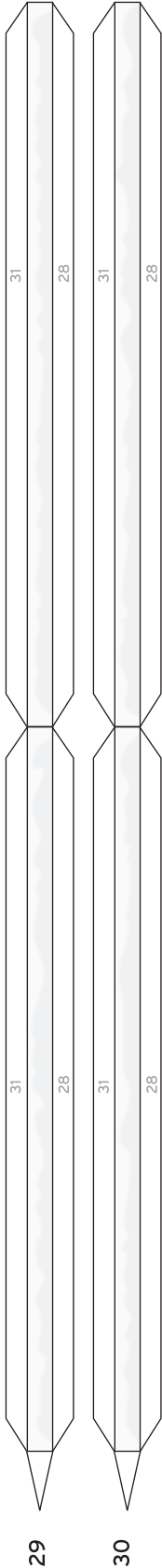


Following Part numbers  
do not exist in this version  
of the model:  
21,22,23,24,32,33



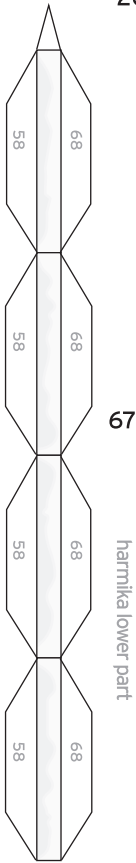
second step back (top of lower section)

31

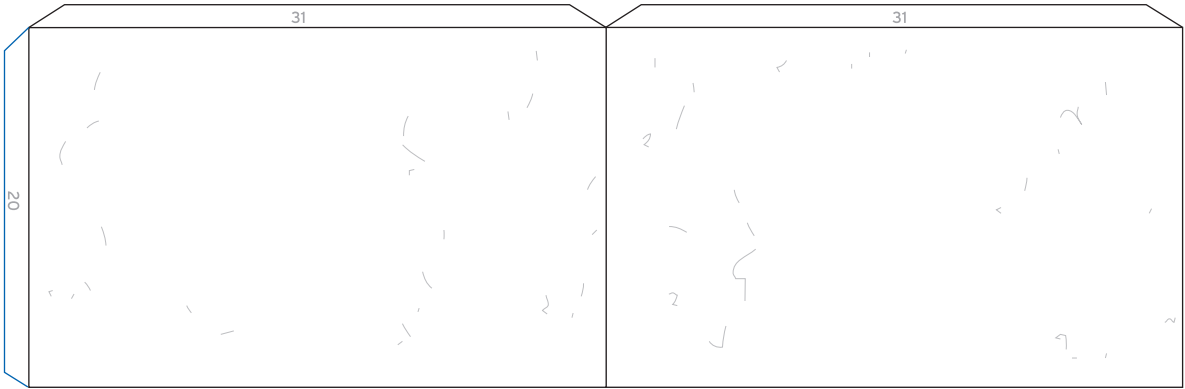


second step back

TIBETAN STUPA

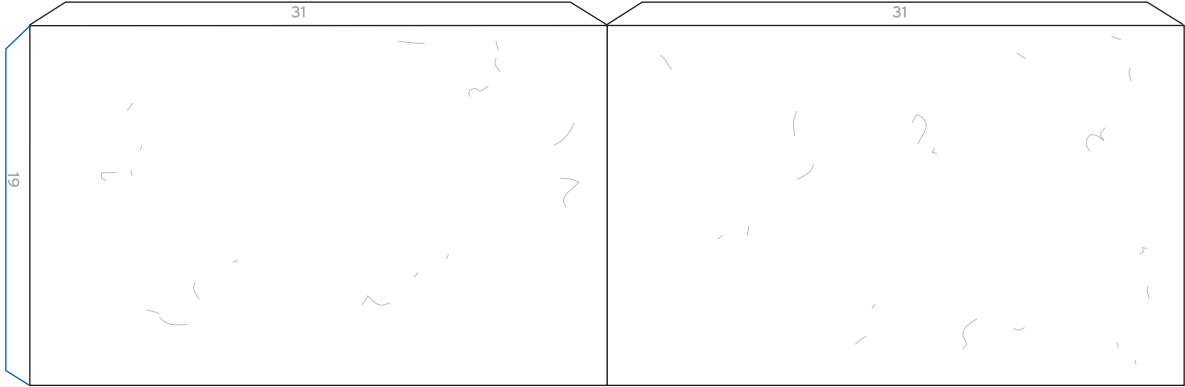


19

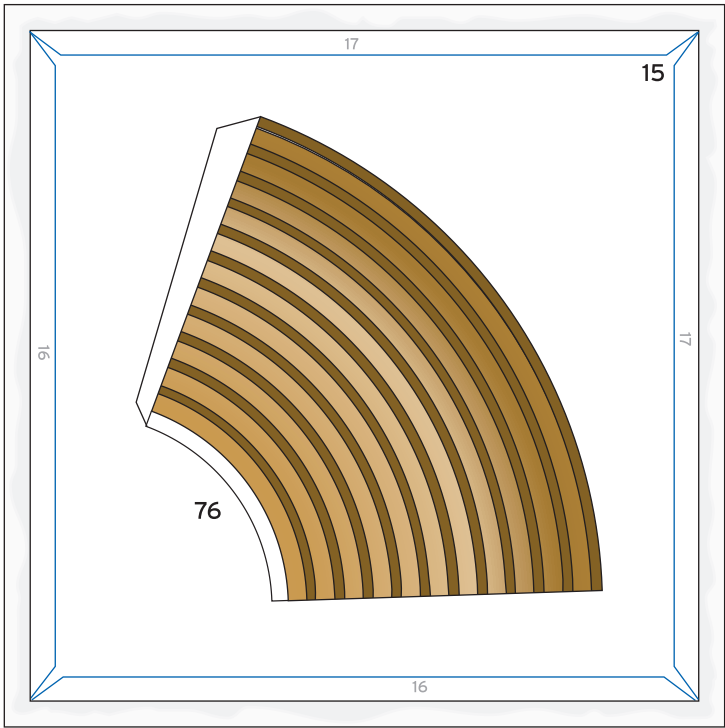


inner wall

20

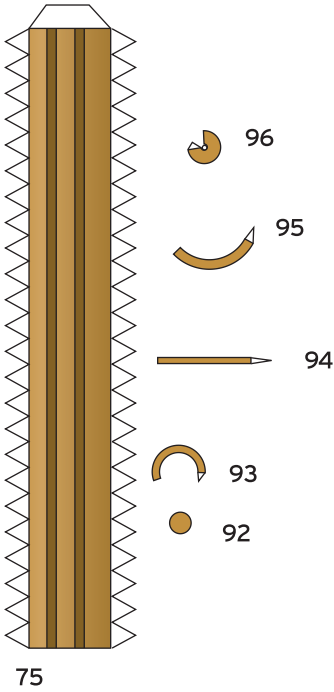


inner wall

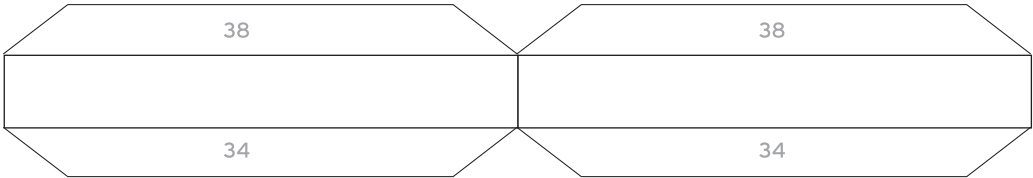


fourth step

model designed by Christoph Stahl 2017-2018  
©stahlhart productions

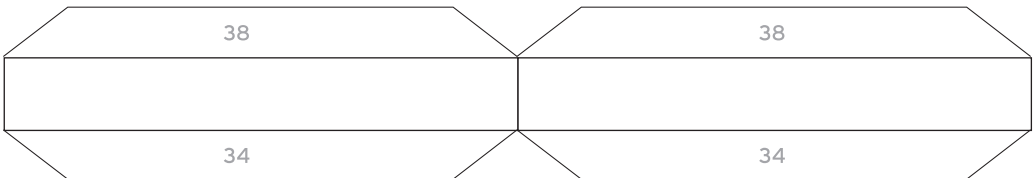


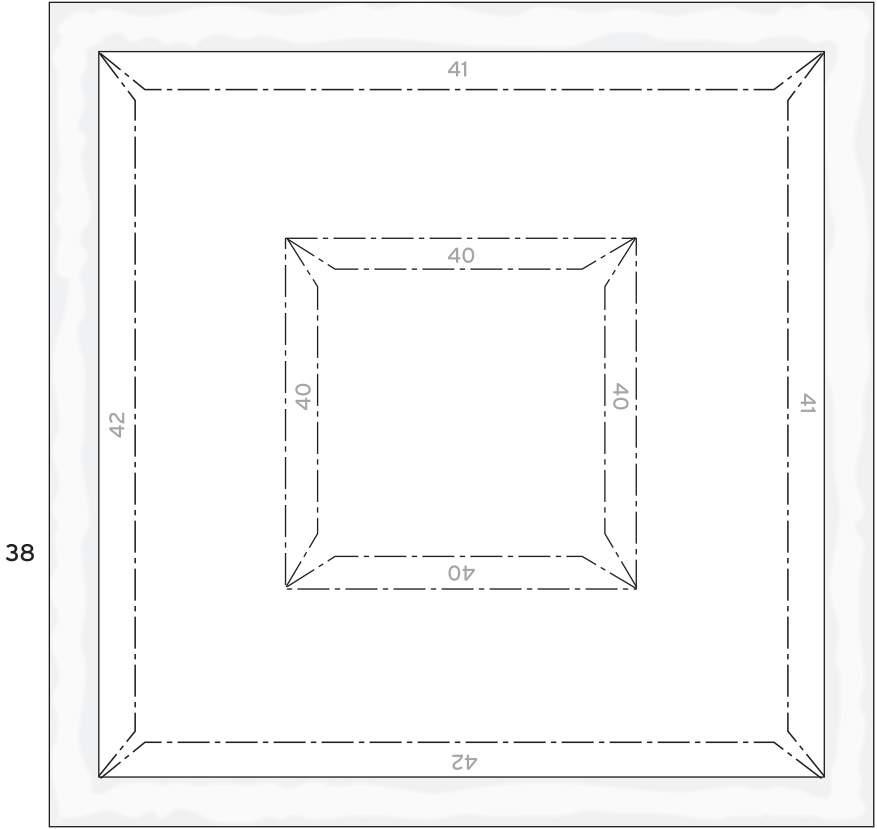
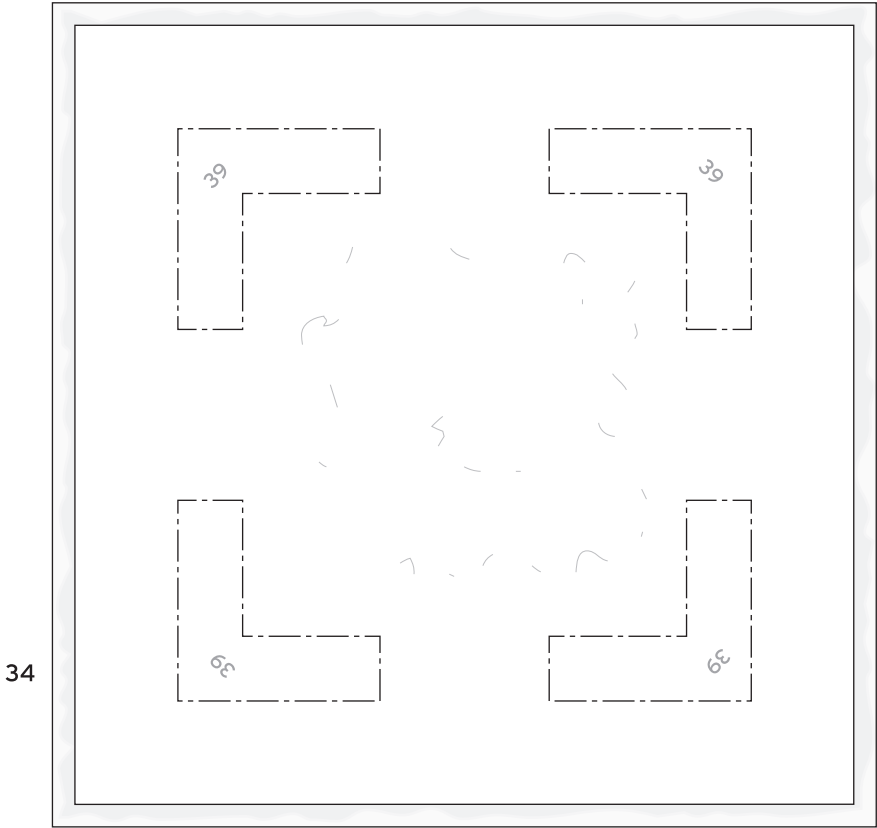
37



support for main platform

37

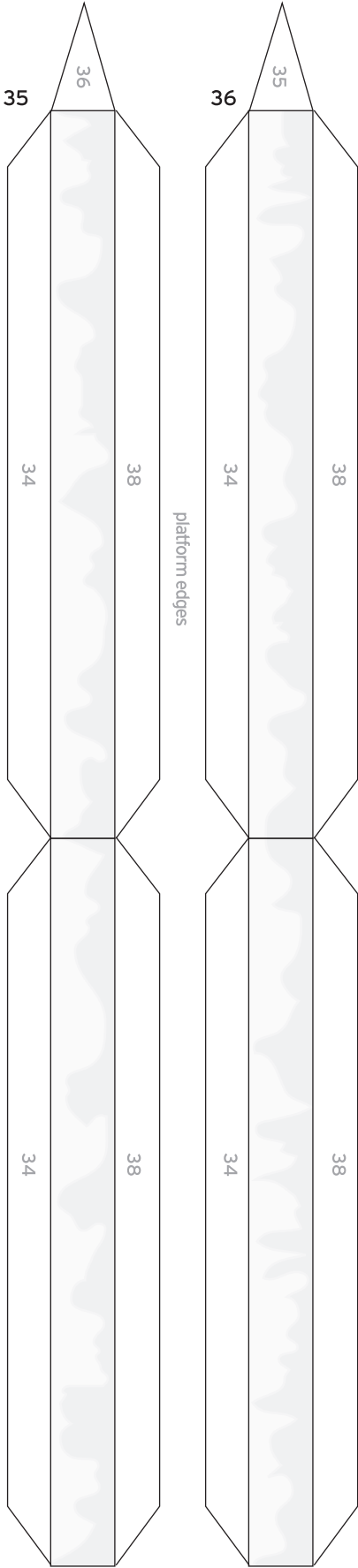




# TIBETAN STUPA

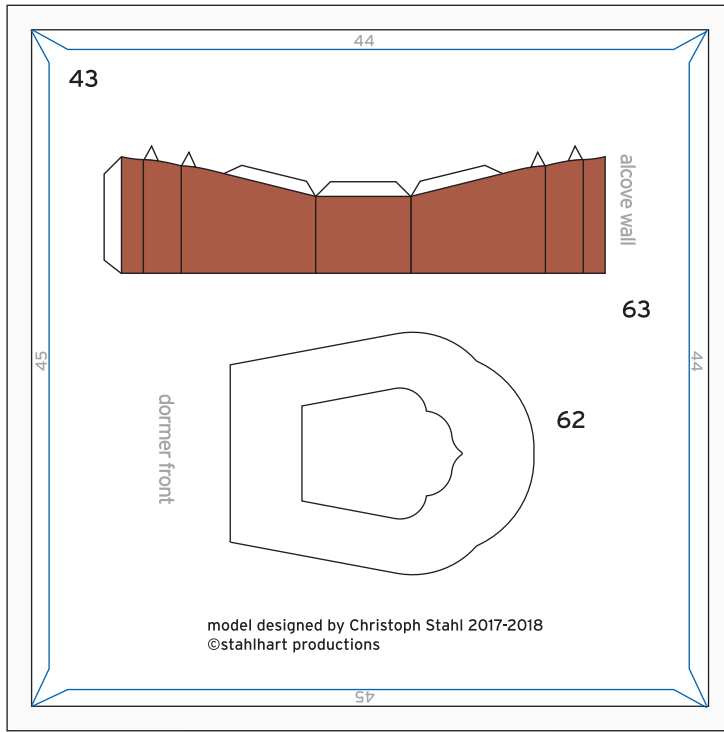
platform lower side

platform upper side

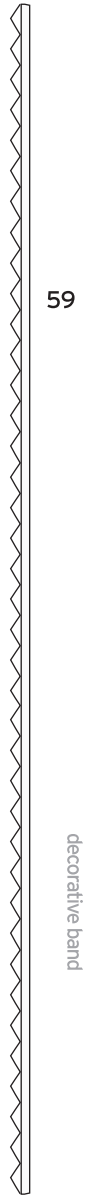
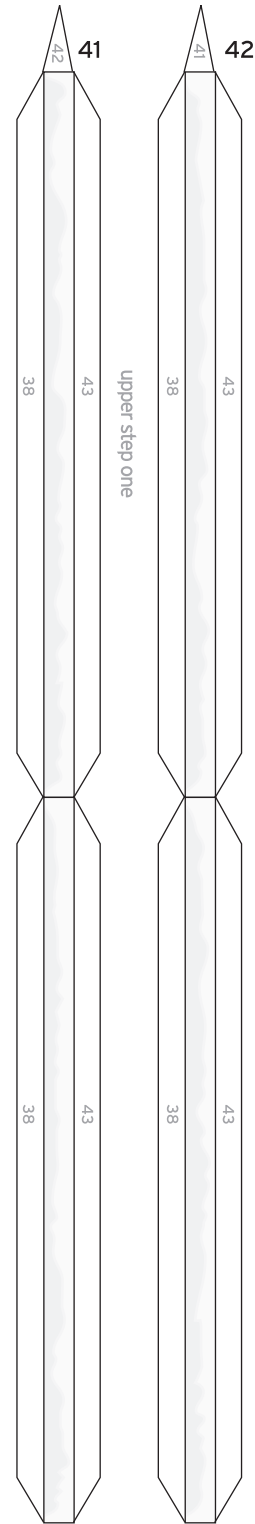


# TIBETAN STUPA

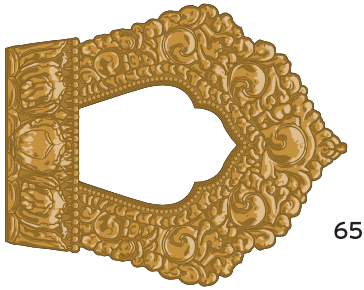
upper step one



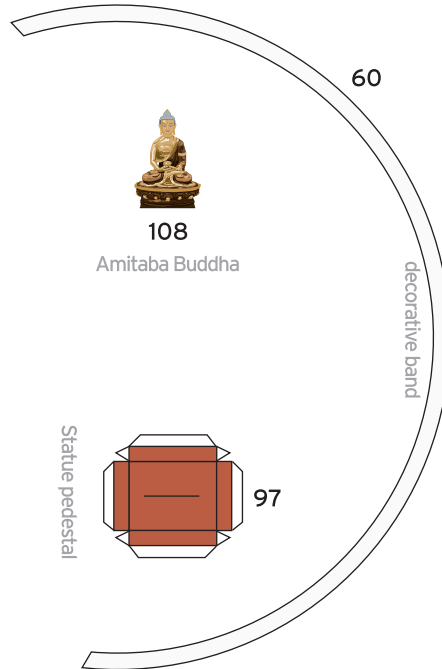
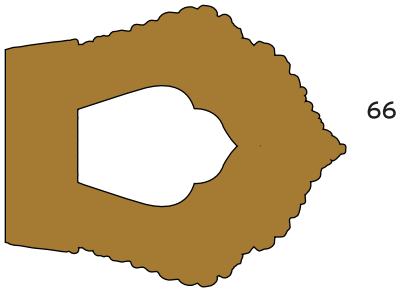
model designed by Christoph Stahl 2017-2018  
©stahlhart productions



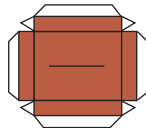
dormer decorative cover



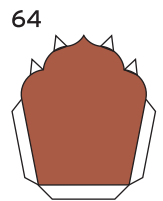
dormer decorative cover



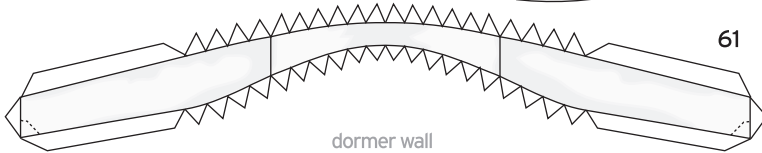
Amitaba Buddha



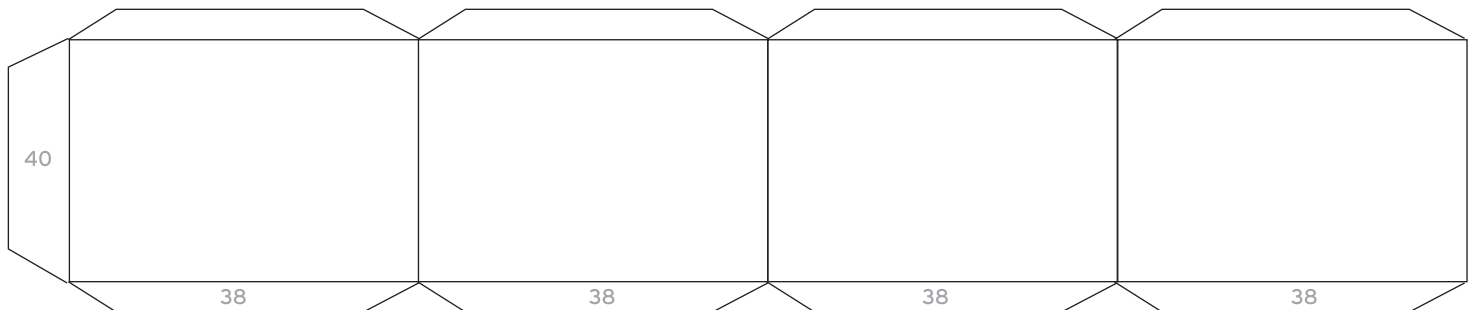
Stature pedestal



alcove rear wall



dormer wall



support for steps section

40