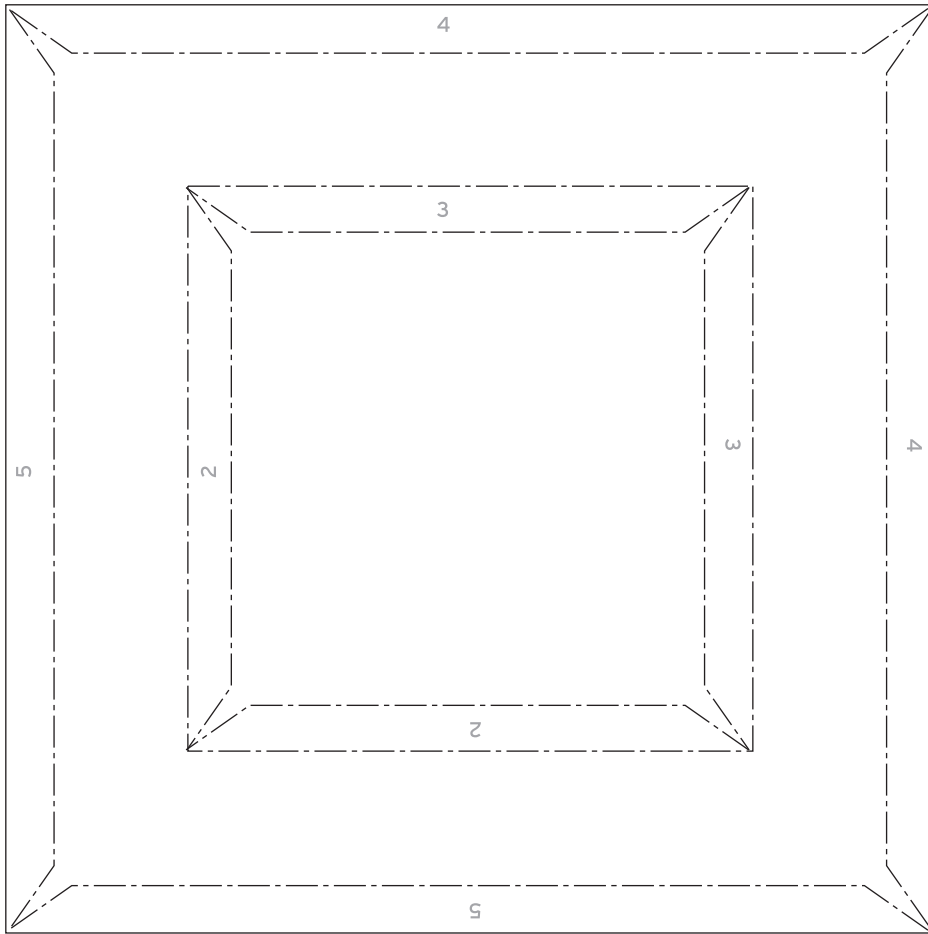


TIBETAN STUPA

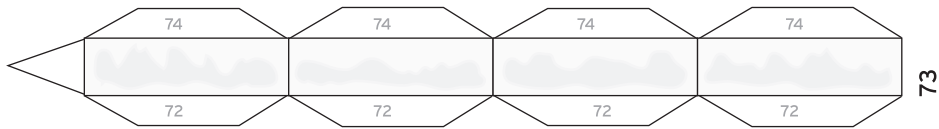
model designed by Christoph Stahl 2017-2018
© stahlhart productions

base plate

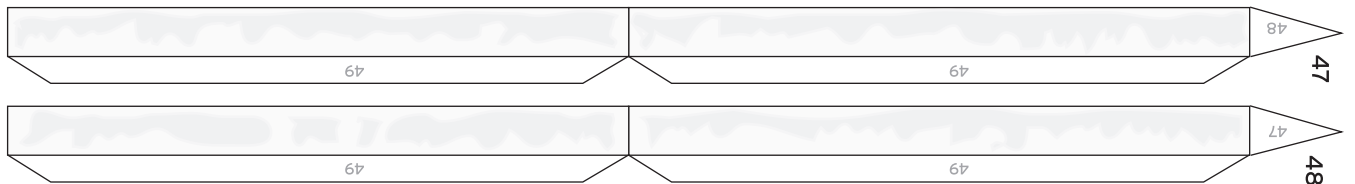
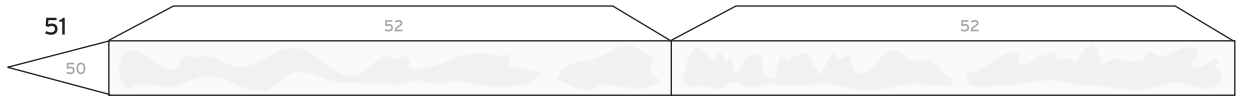
1



harmika upper part



upper step four



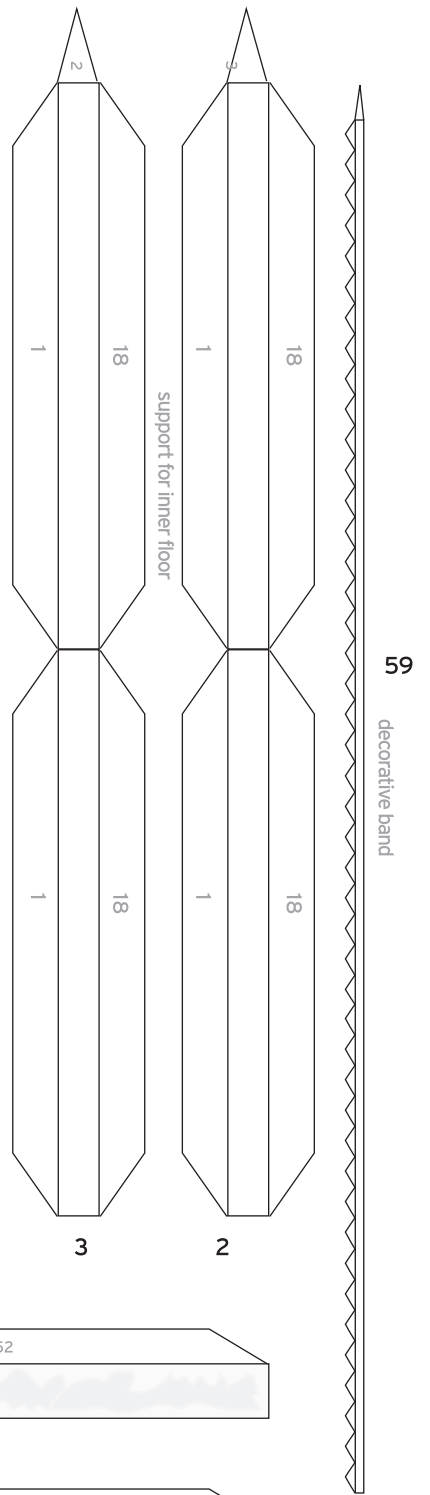
upper step three



upper step two

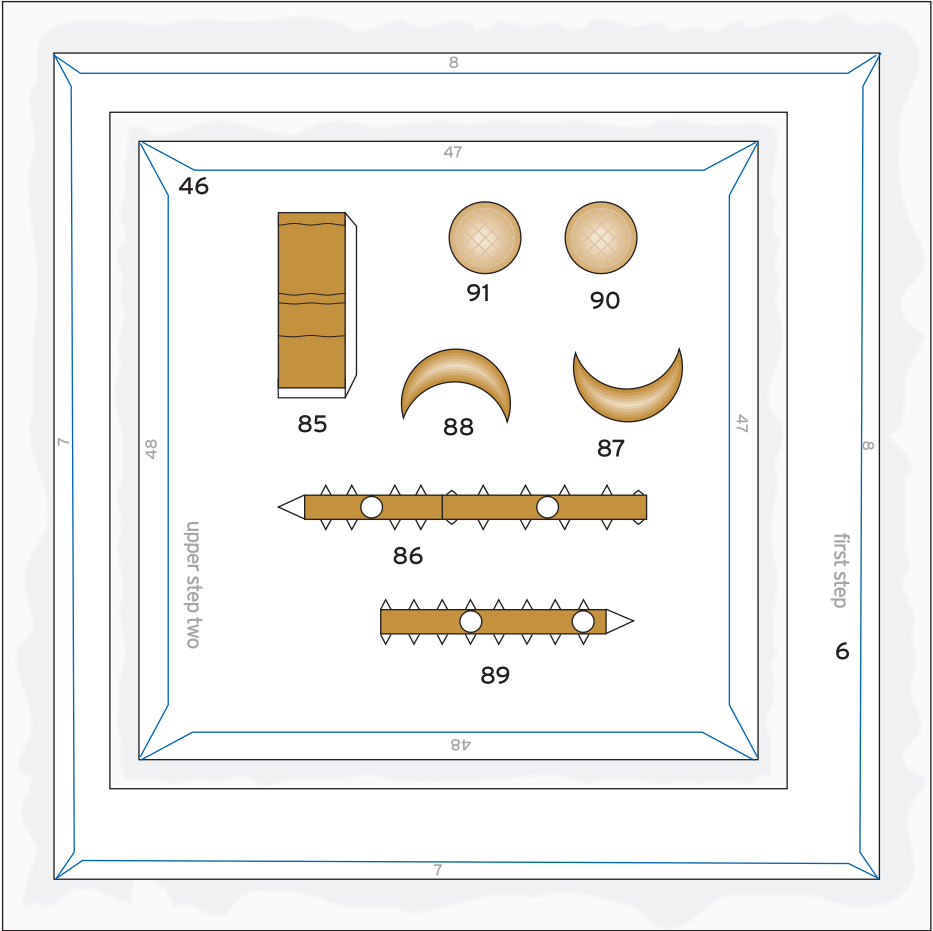


upper step two

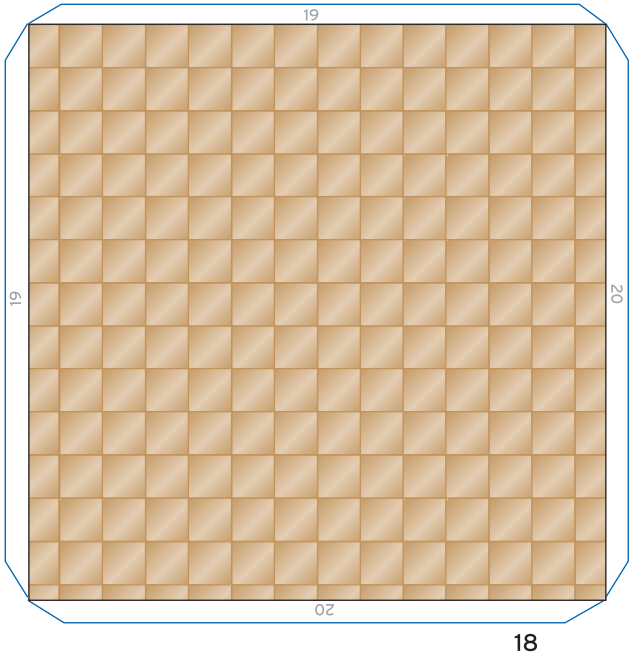


59

decorative band



TIBETAN STUPA



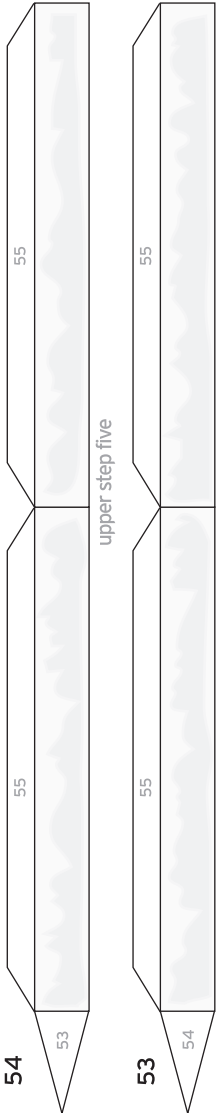
80

model designed by Christoph Stahl 2017-2018
©stahlhart productions

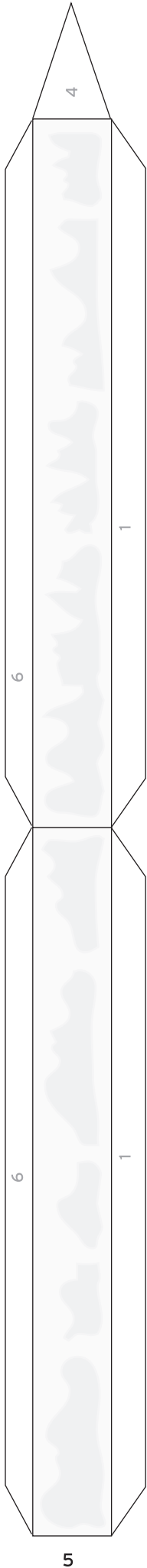


78

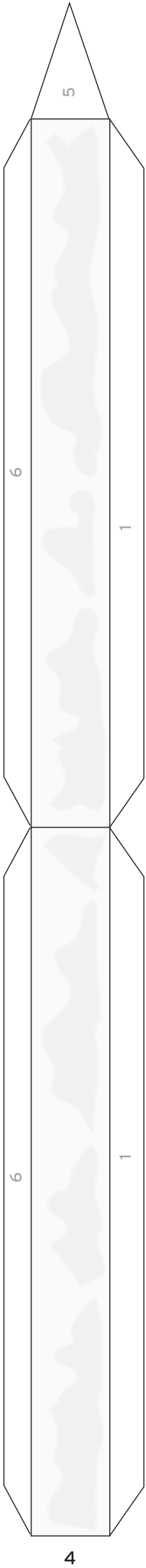
inner floor



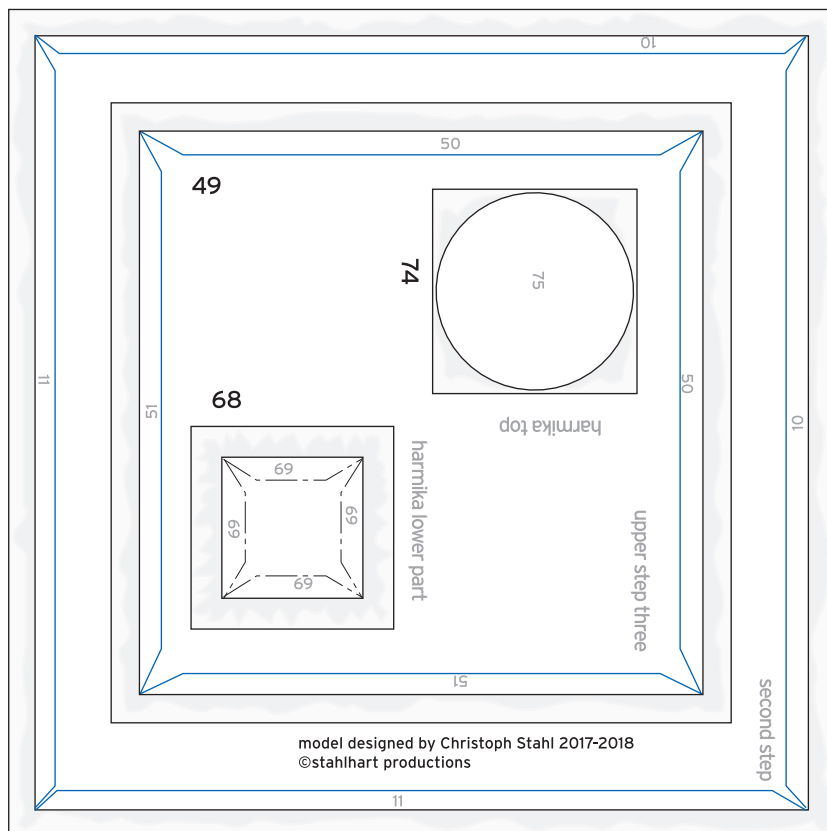
upper step five



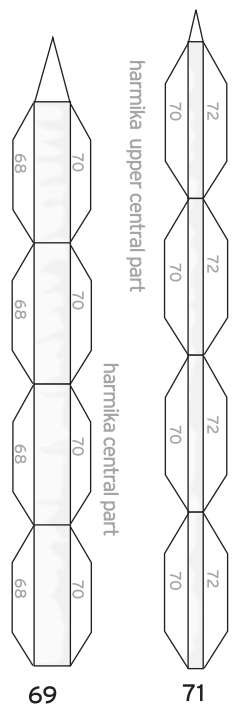
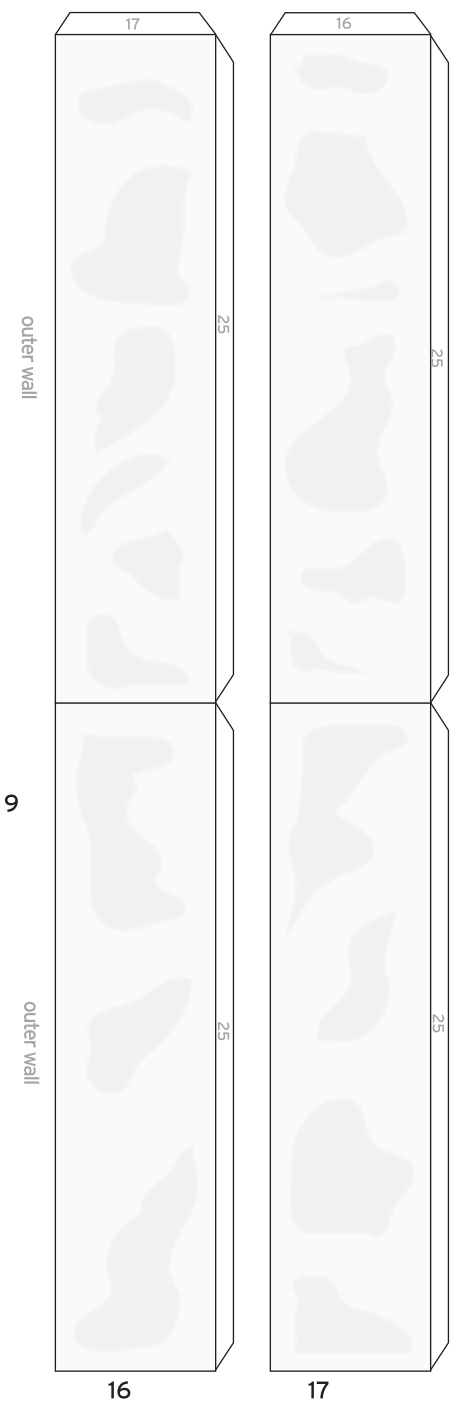
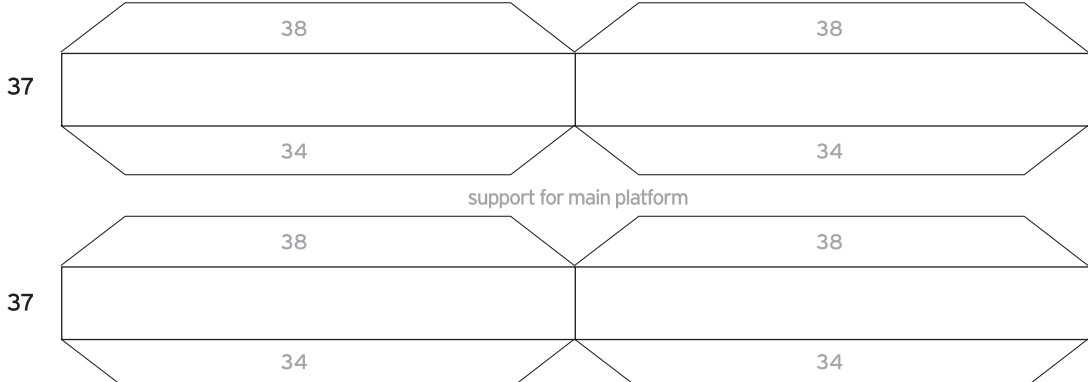
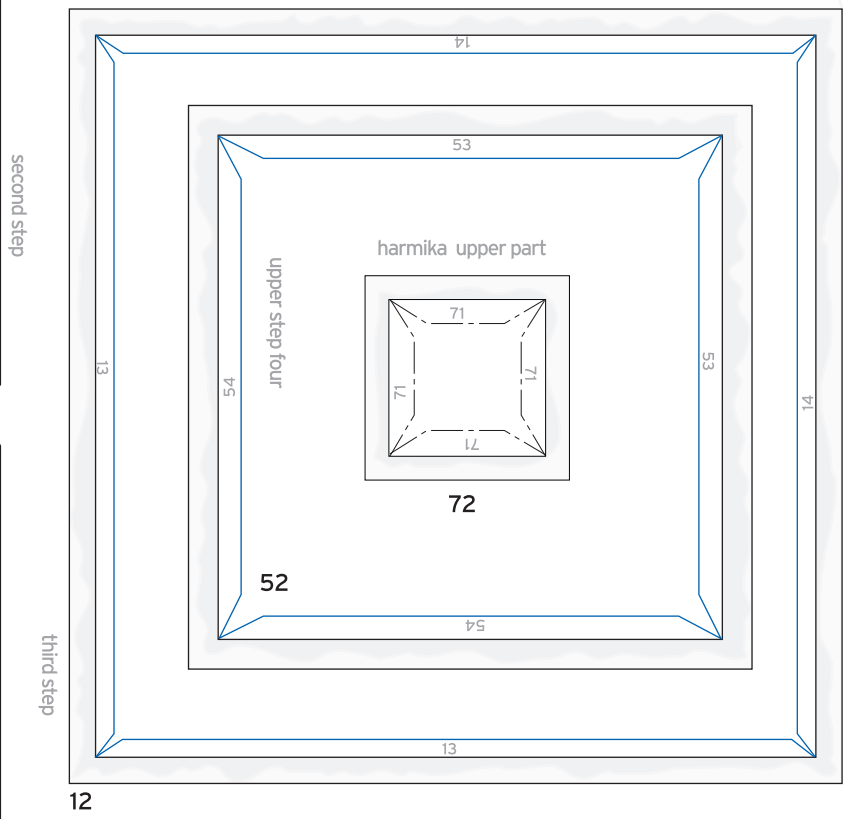
first step

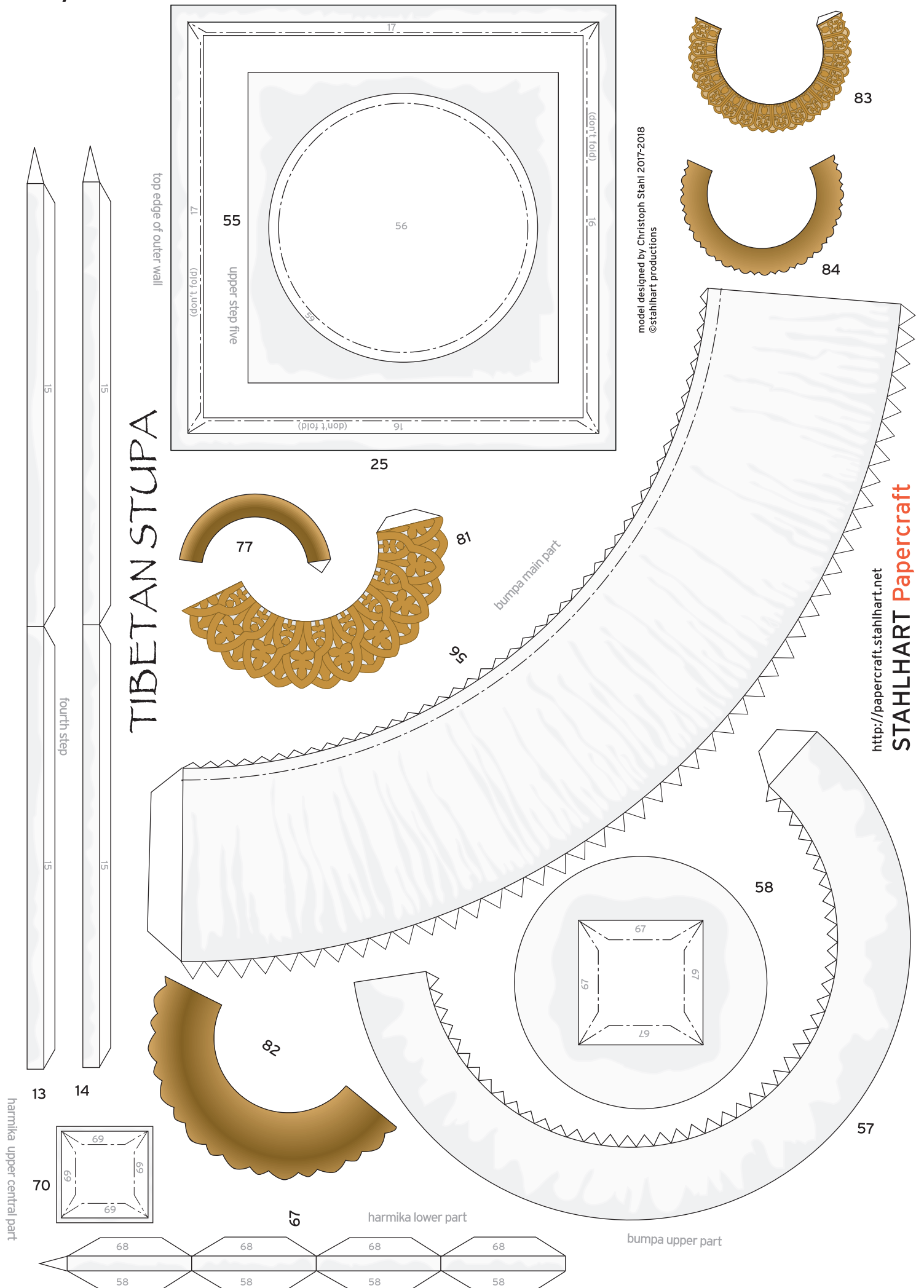


TIBETAN STUPA



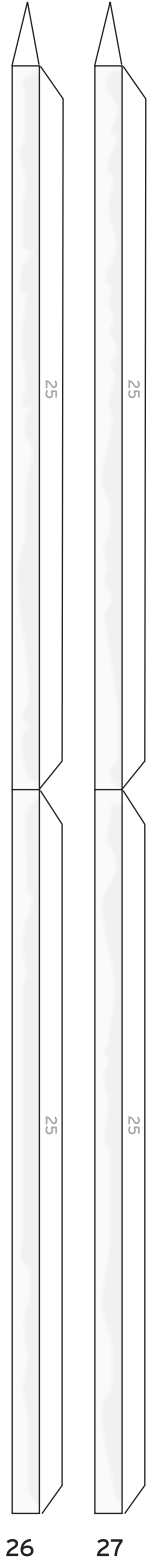
model designed by Christoph Stahl 2017-2018
©stahlhart productions



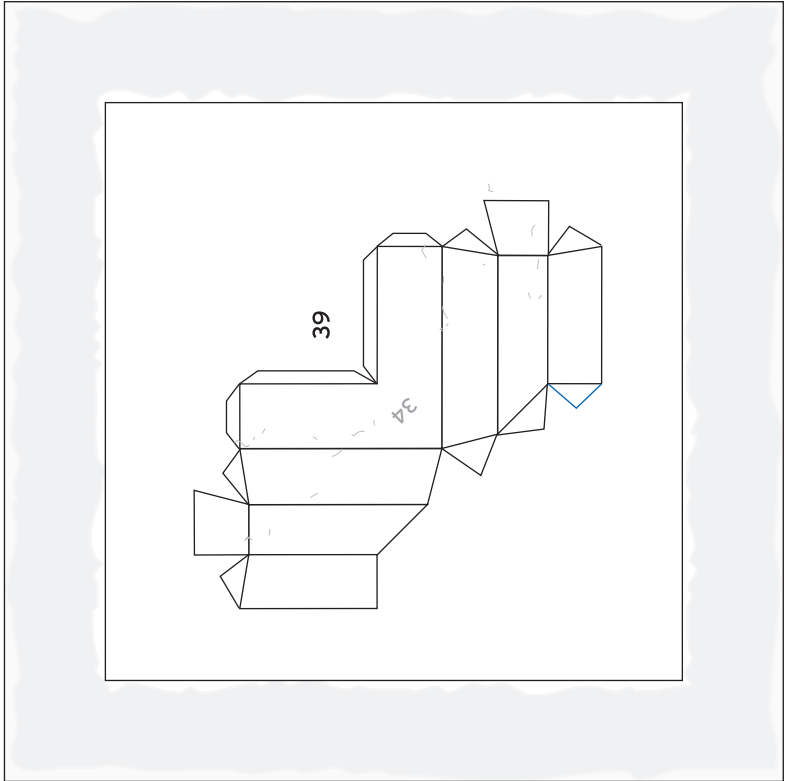
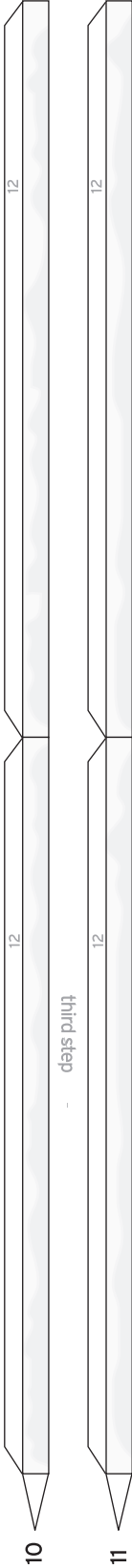


TIBETAN STUPA

first step back

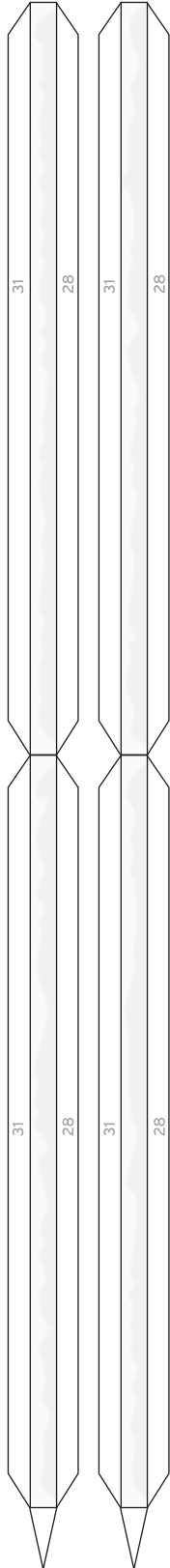


third step

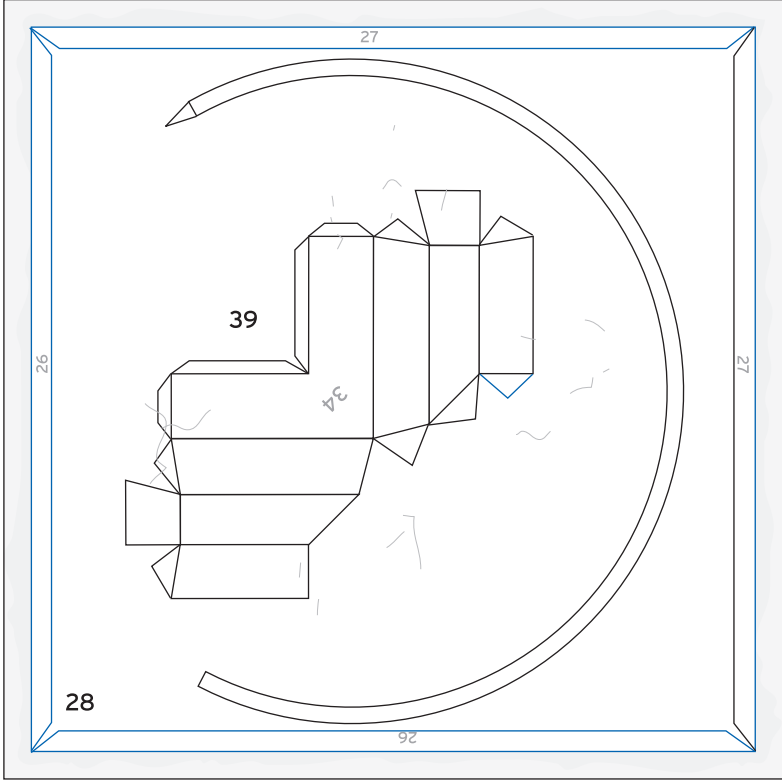


second step back (top of lower section)

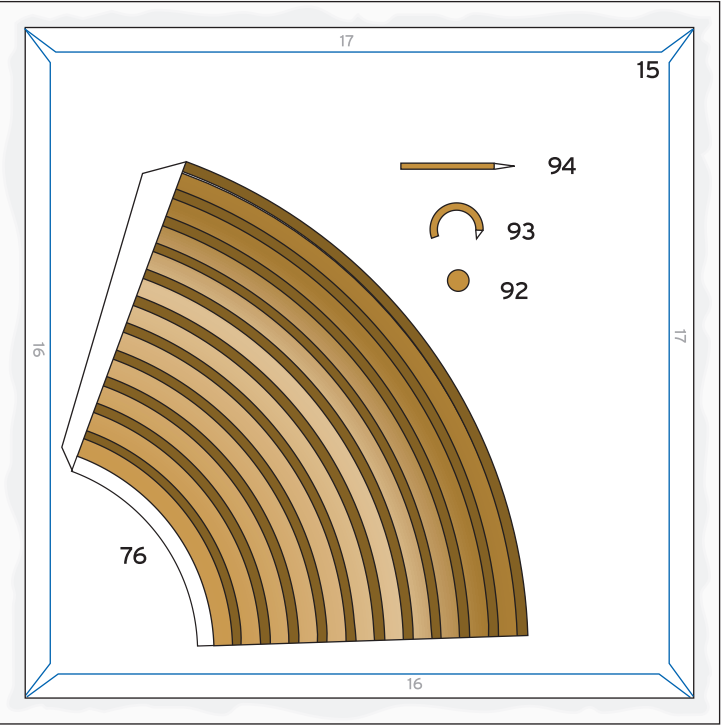
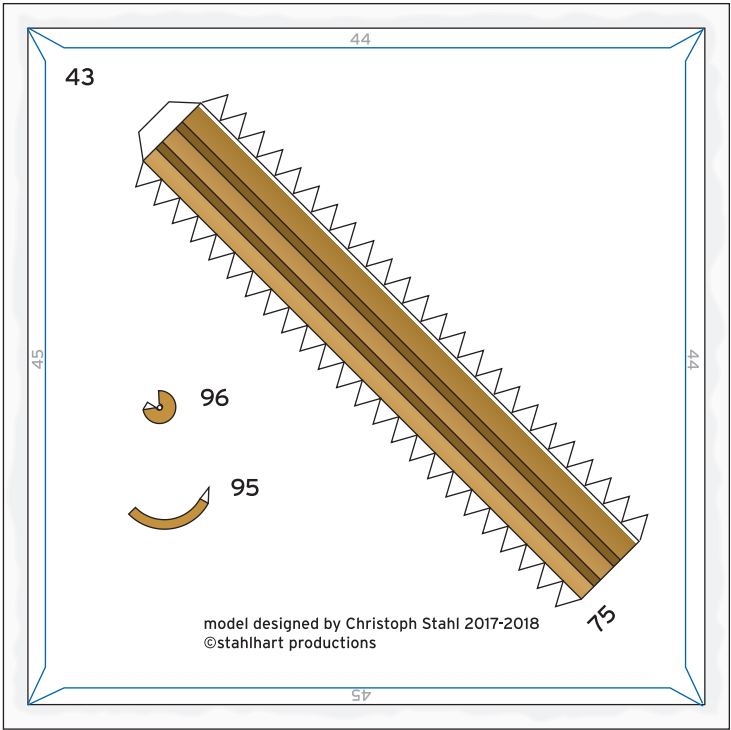
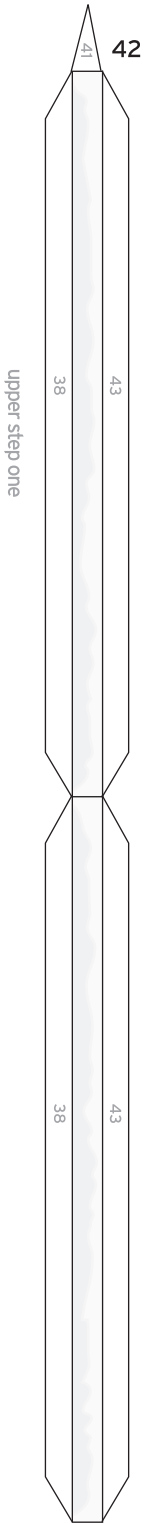
31



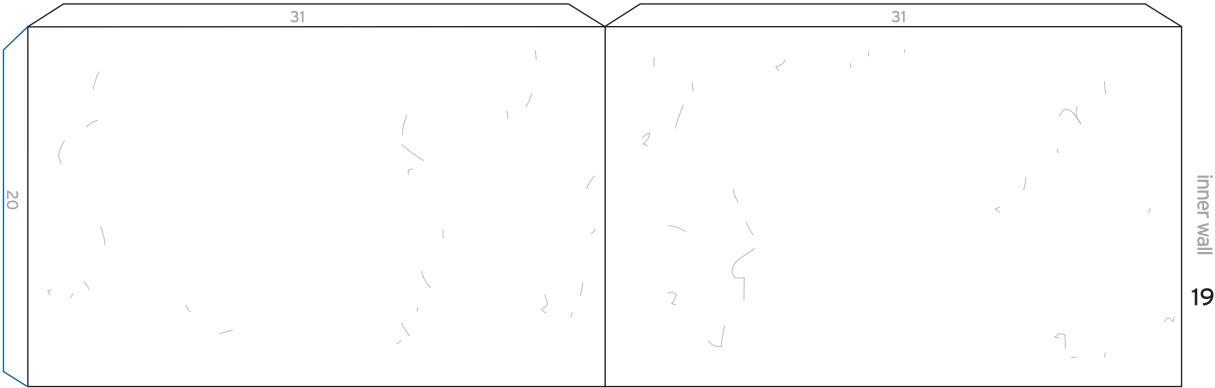
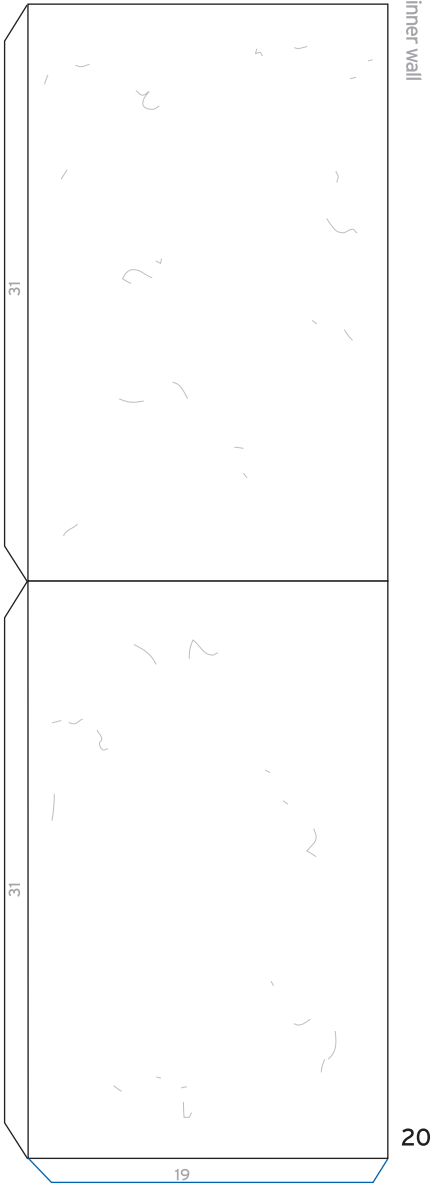
second step back



first step back



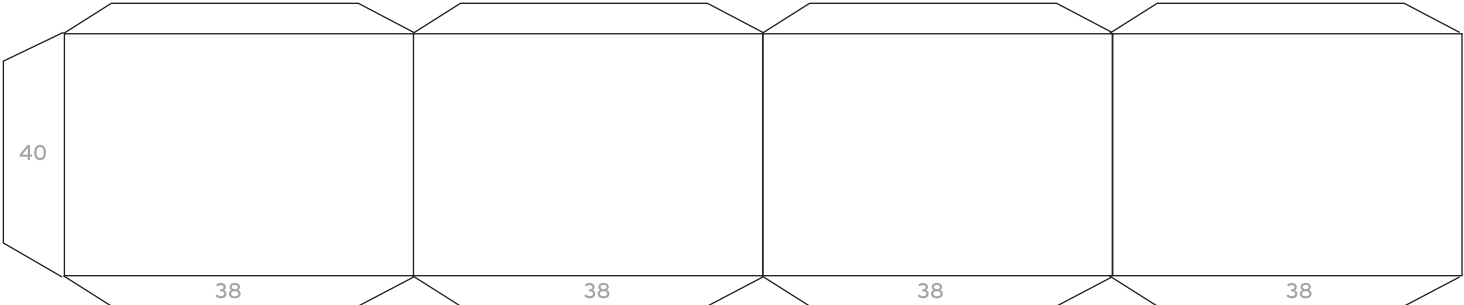
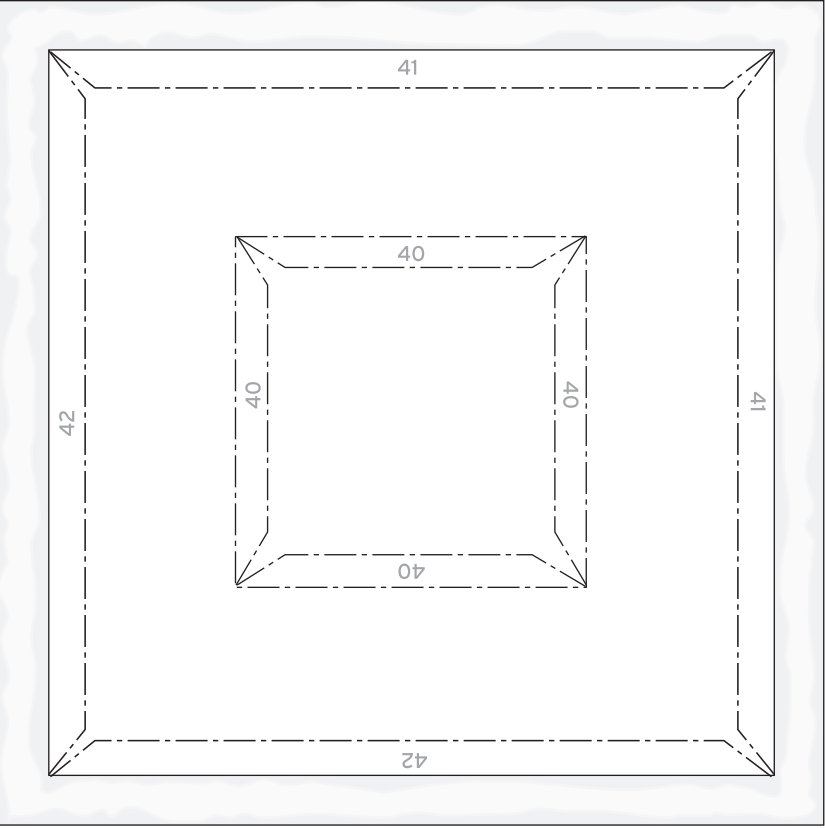
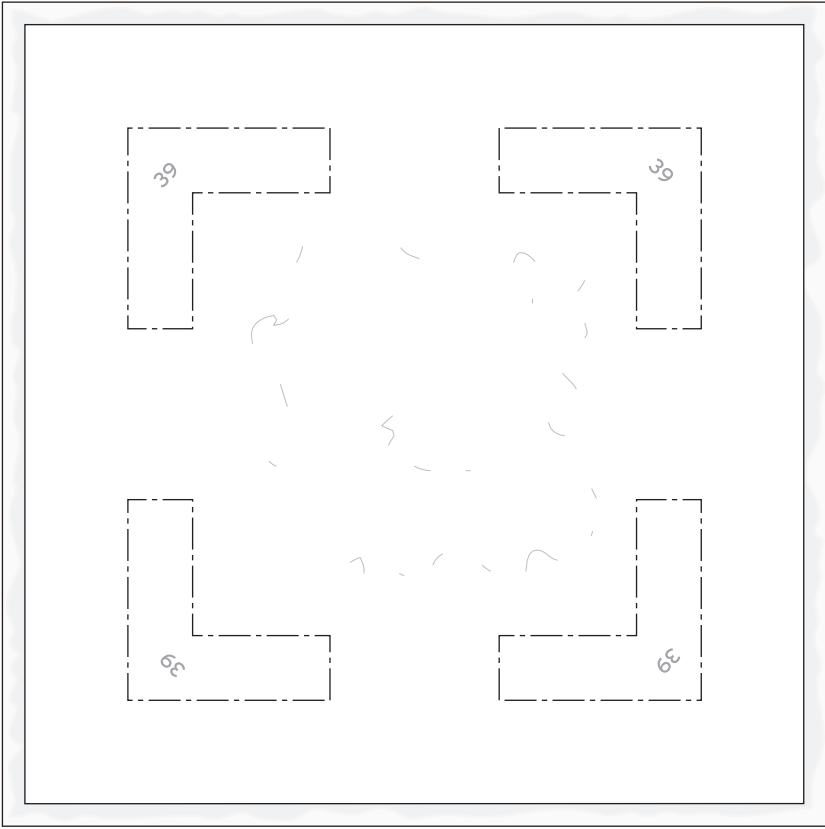
fourth step



TIBETAN STUPA

Following Part numbers
do not exist in this version
of the model:
21,22,23,24,32,33,
61,62,63,64,65,97,108

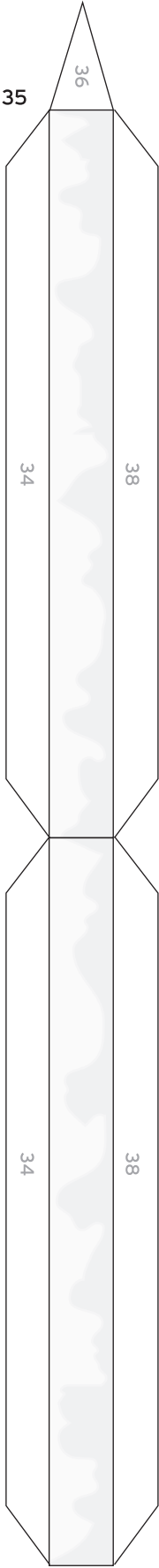
TIBETAN STUPA



platform lower side 34

STAHLHART Papercraft <http://papercraft.stahlhart.net>

platform upper side 38



platform edges

