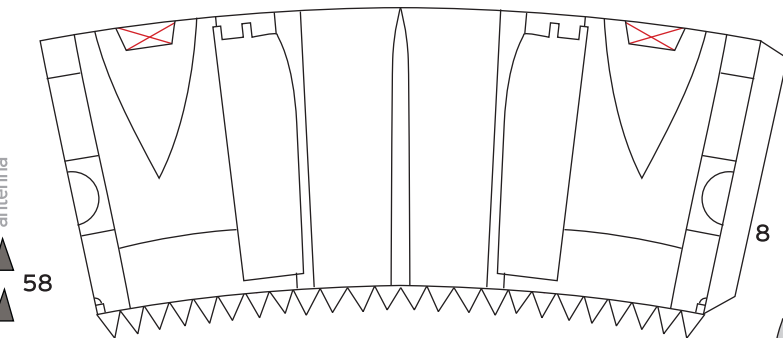
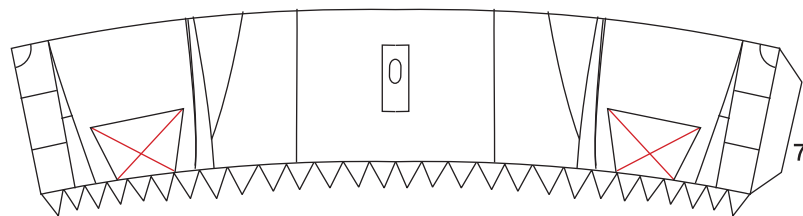
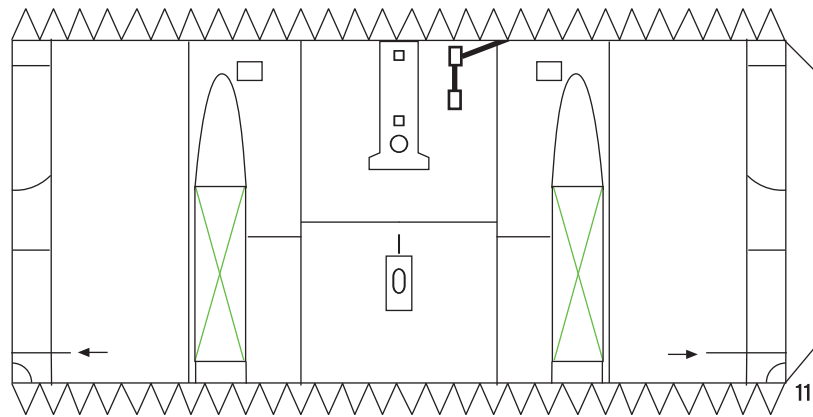
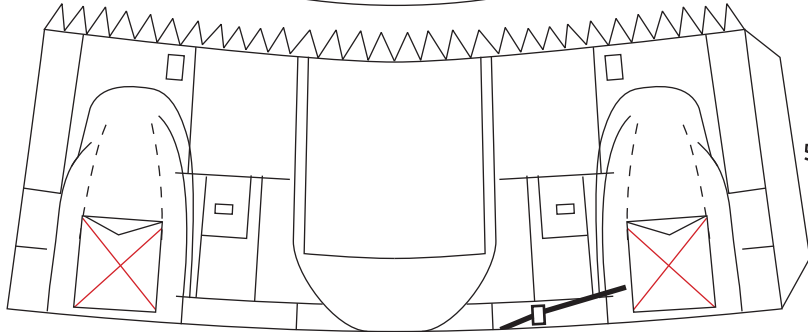
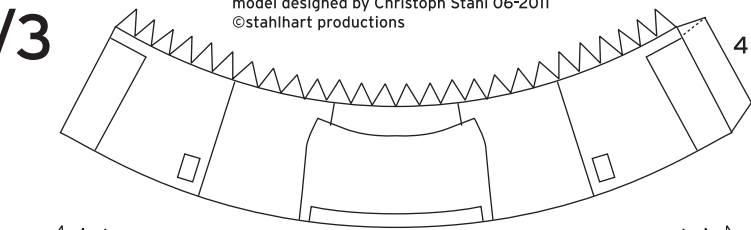


# Douglas F3D-2 Skyknight

1:60 scale

white version



antenna  
▲  
58

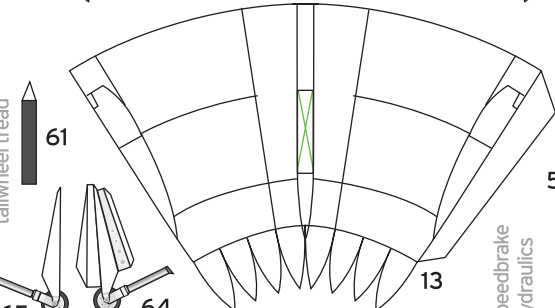
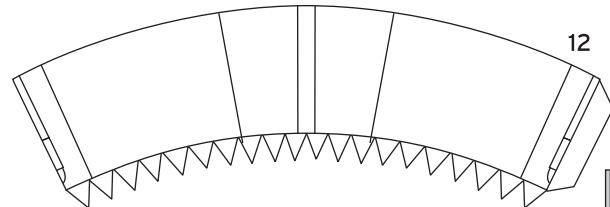
tailwheel (up)  
▲  
62

dome  
●  
60

arrestor hook  
—  
63

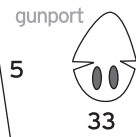
tailwheel tread  
—  
61

tailwheel (down)  
—  
65

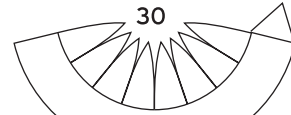


speedbrake  
hydraulics  
—  
54

55



5



30

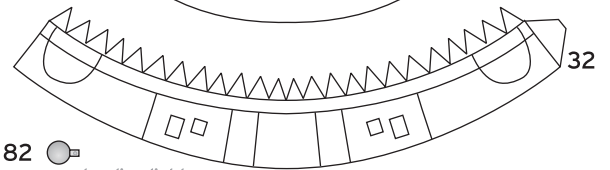


34

antenna  
—  
59



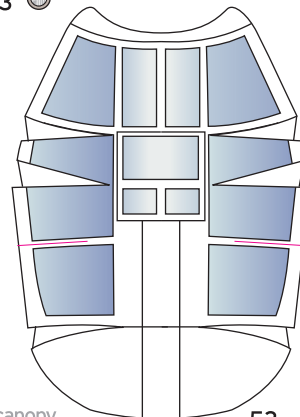
31



32

82 ●

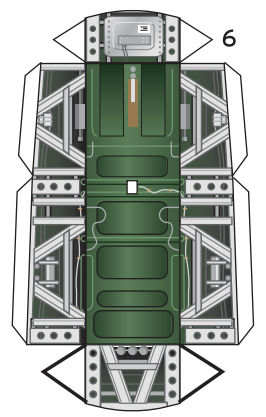
83 ● landing light



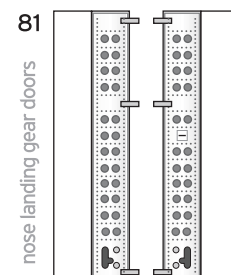
canopy

53

nose wheel well



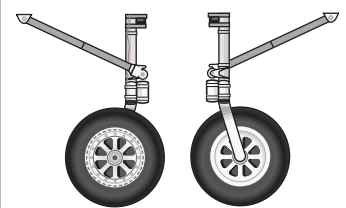
6



81

nose landing gear doors

nose landing gear

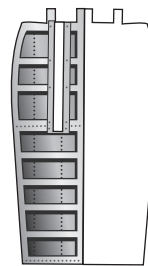


79

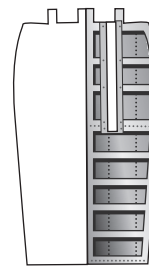
78

nose wheel tread

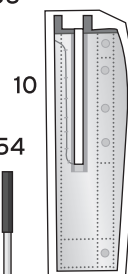
77



56



57

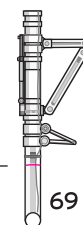
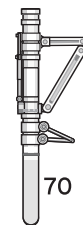


10

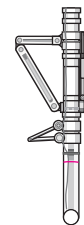
54

9

speedbrakes



69

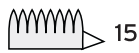


70

cut

main landing gear struts

splitter cone



15



compressor

35

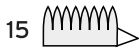
Douglas

# F3D-2 Skyknight

1:60 scale

model designed by Christoph Stahl 06-2011  
©stahlhart productions

splitter cone



15

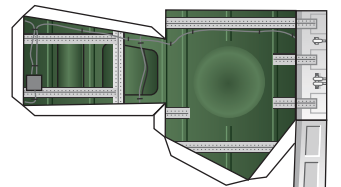


compressor

36

wheel tread

66



3

wing stiffener

main wheel well

intake tunnel

14

14



wheels



intake tunnel

17

18

29

28

exhausts

25

exhausts

25

23

24

19

21

20

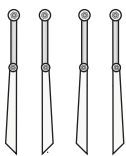
22

vertical stabilizer

51

50

73



Landing gear detail

horizontal stabilizer

52

74

Landing gear detail

72

71

66

wheel tread

main wheel well

67

wheels



2

tail stiffener

49

STAHLHART Papercraft  
<http://papercraft.stahlhart.net>

front →

