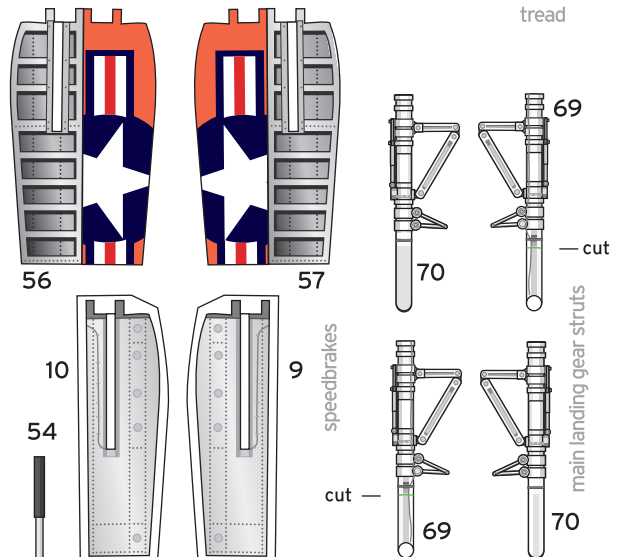
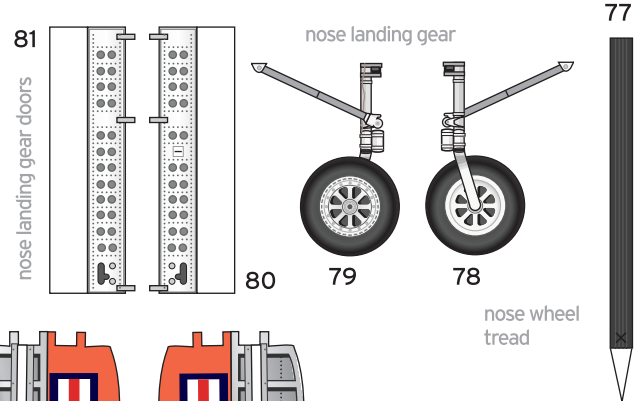
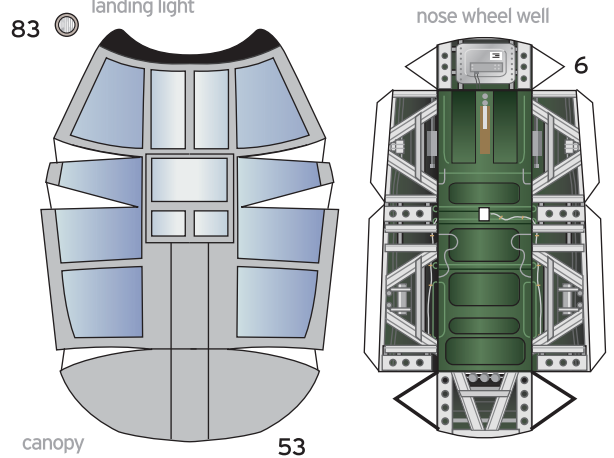
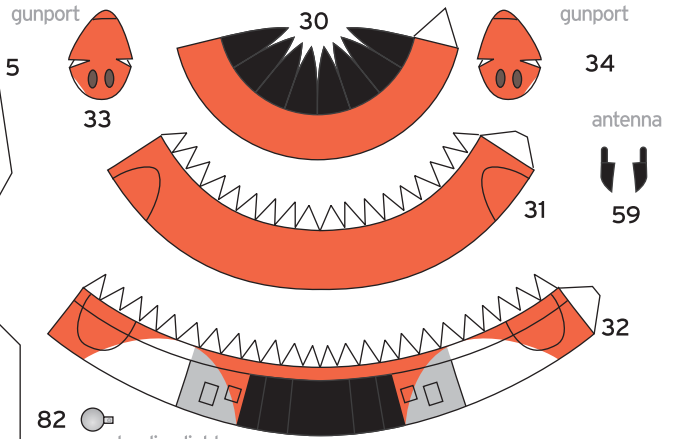
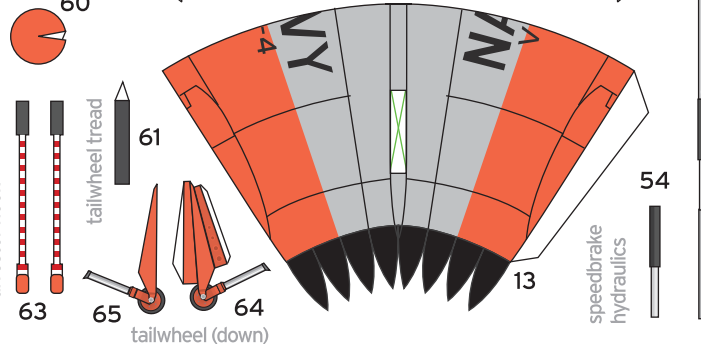
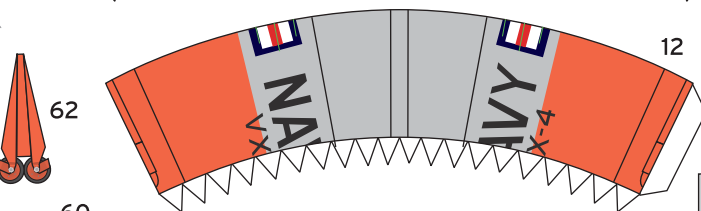
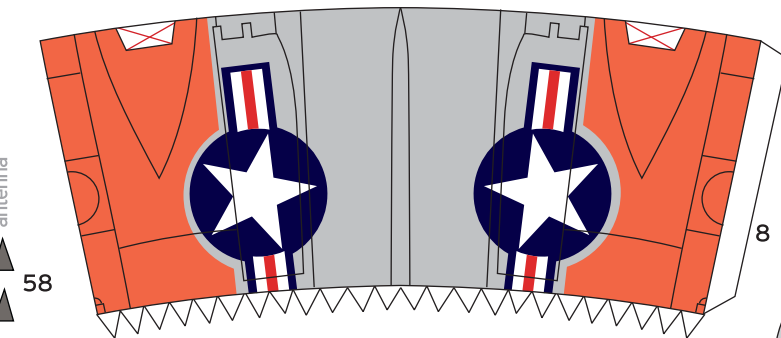
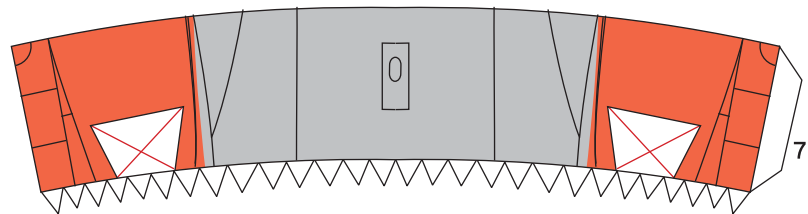
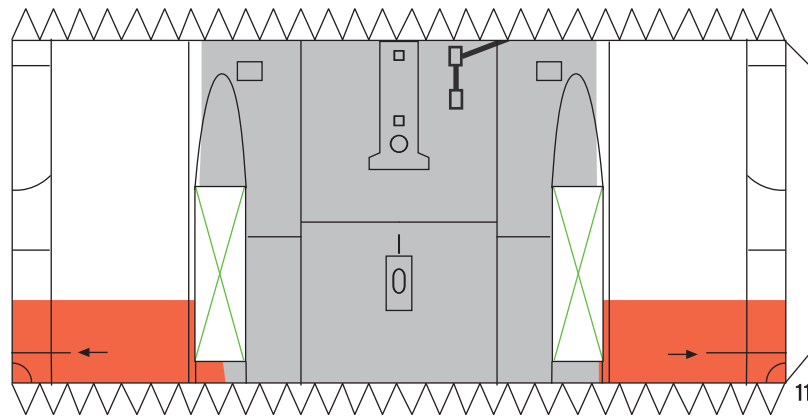
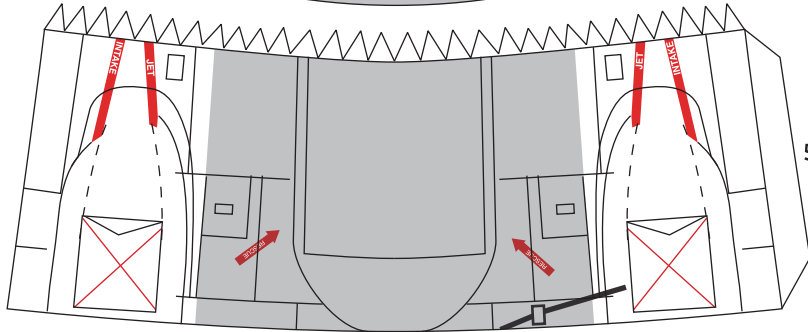
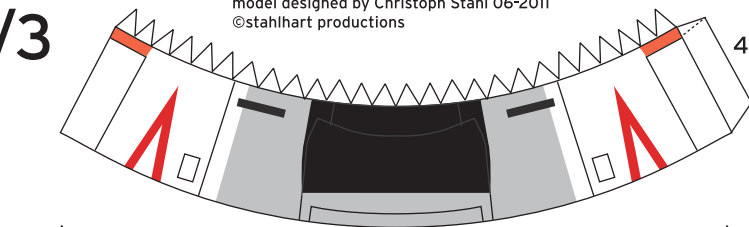


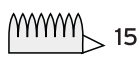
Douglas F3D-2T2 Skyknight

1:60 scale

VX-4, NAS Point Mugu, 1958



splitter cone



15

compressor



16

35

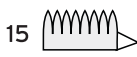
Douglas

F3D-2 Skyknight

1:60 scale

model designed by Christoph Stahl 06-2011
©stahlhart productions

splitter cone



15

compressor

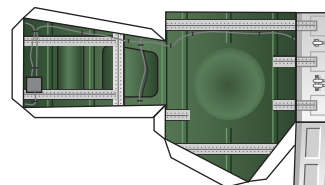


16

36

wheel tread

66



3

main wheel well

intake tunnel

14



wheels



14

intake tunnel

26

26

