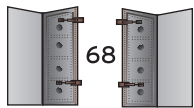
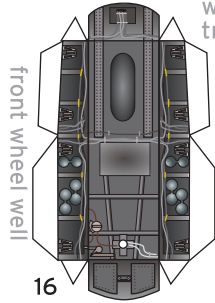


front wheel
well doors

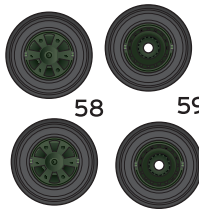
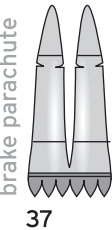
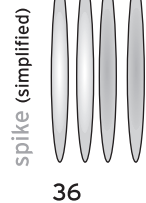
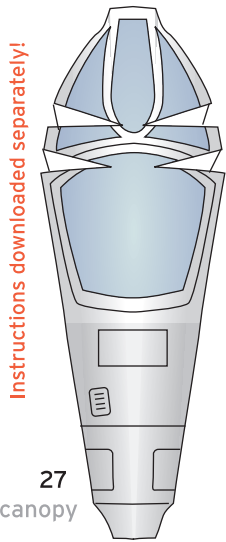


wheel
treads

66 60

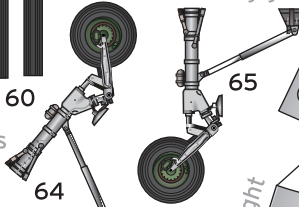


Instructions downloaded separately!

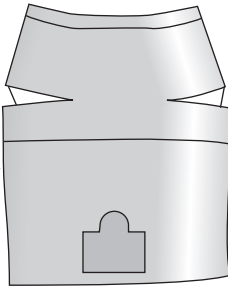


wheels

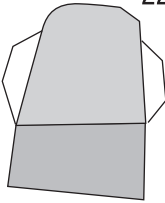
front landing gear



port air intake

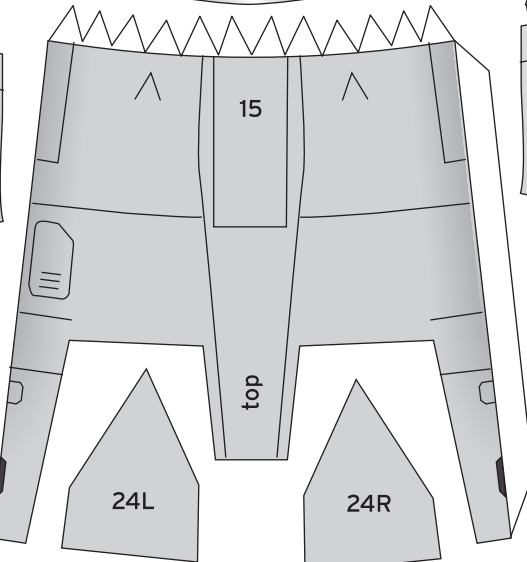


port air intake
plate



model designed by Christoph Stahl 09-2009
©stahlhart productions

landing light

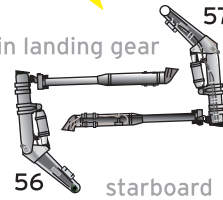


air divider

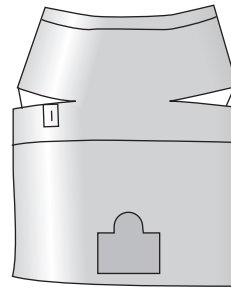
camera (x2)



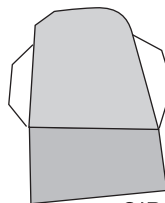
main landing gear



starboard
air intake



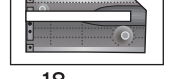
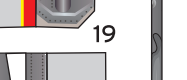
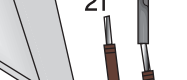
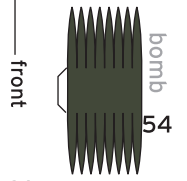
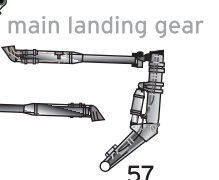
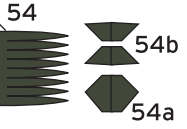
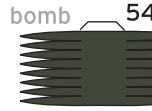
starboard
air intake plate

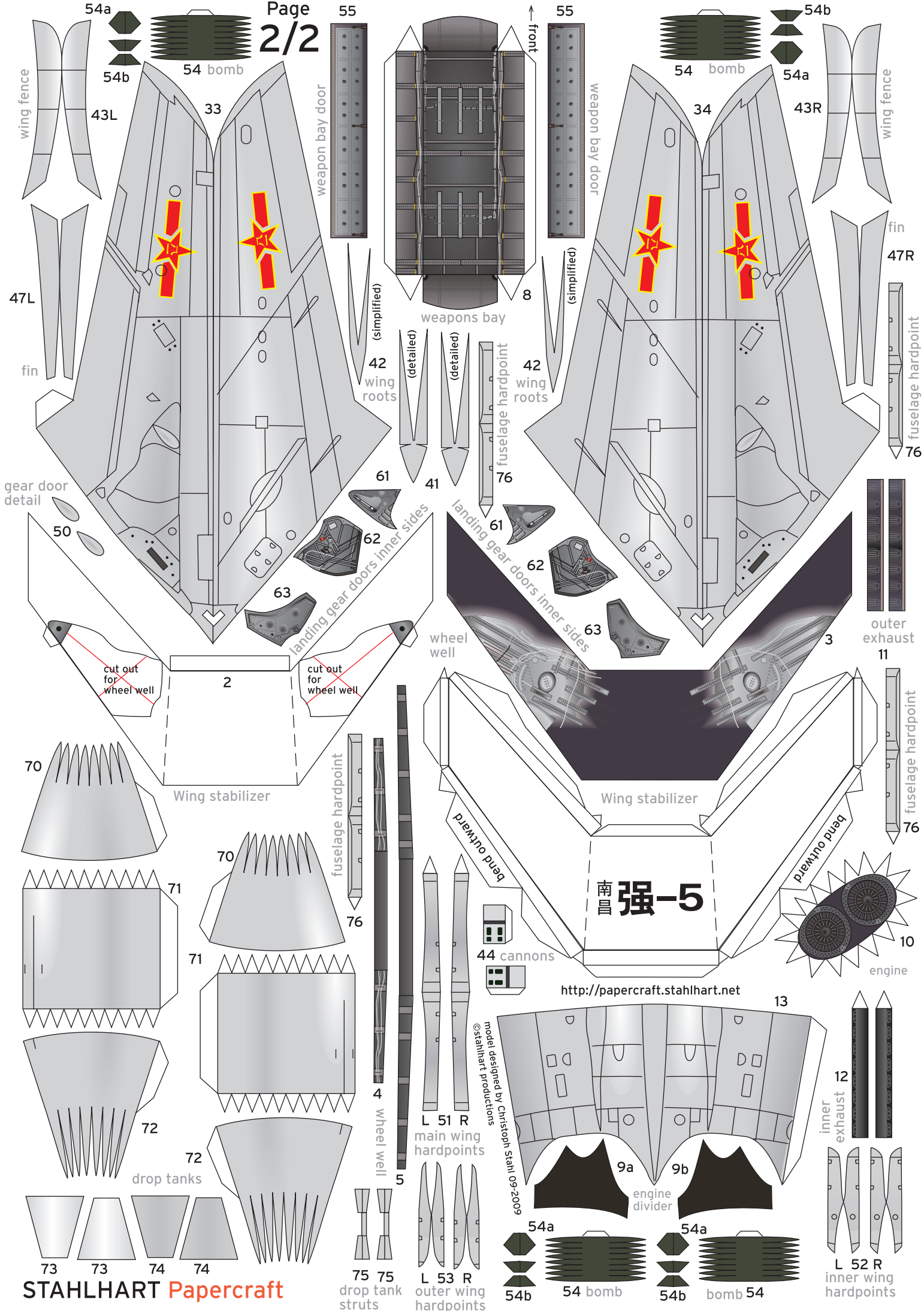


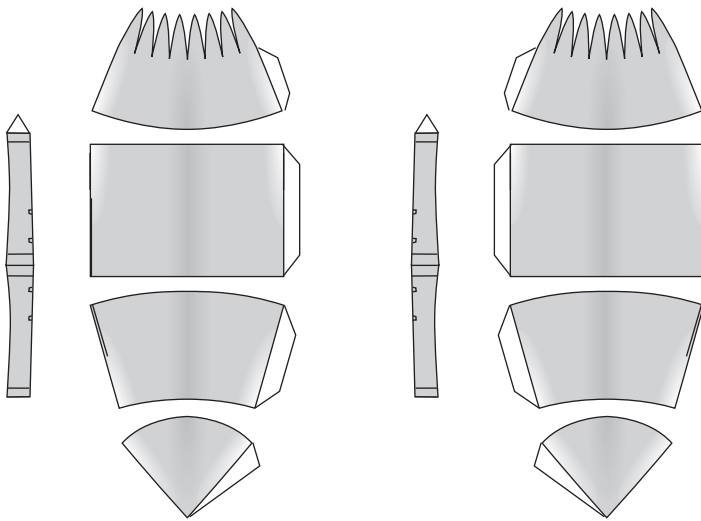
antenna



1:60 scale

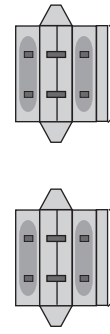




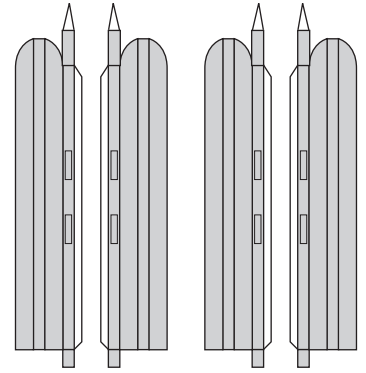


Small drop tanks for outer wing position
plus pylons

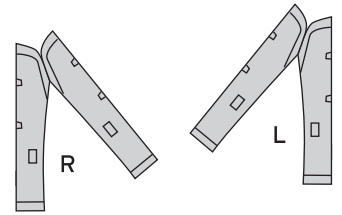
南昌 强-5 Nanchang Q-5



twin bomb racks
for central wing pylon



Launch rails for
air-to-air missiles



central wing pylon for ornanace