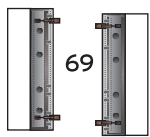
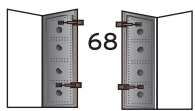
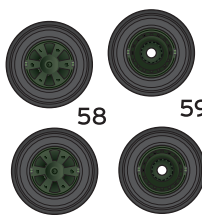


front wheel  
well doors



wheel  
treads

66 60

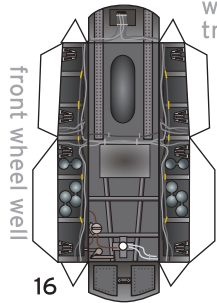
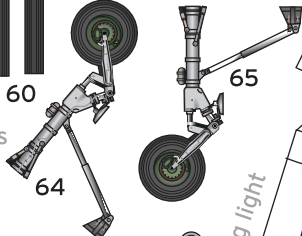


wheels

58

59

front landing gear



front wheel well

16

port air intake

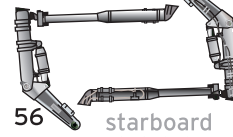
67

landing light

14

main landing gear

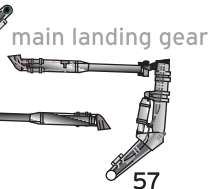
57



starboard  
air intake

56

1:60 scale



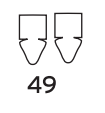
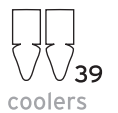
main landing gear

57

Instructions  
downloaded  
separately!

28

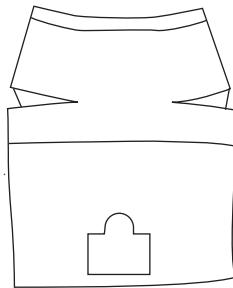
backbone



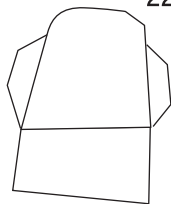
40  
coolers

39  
coolers

49

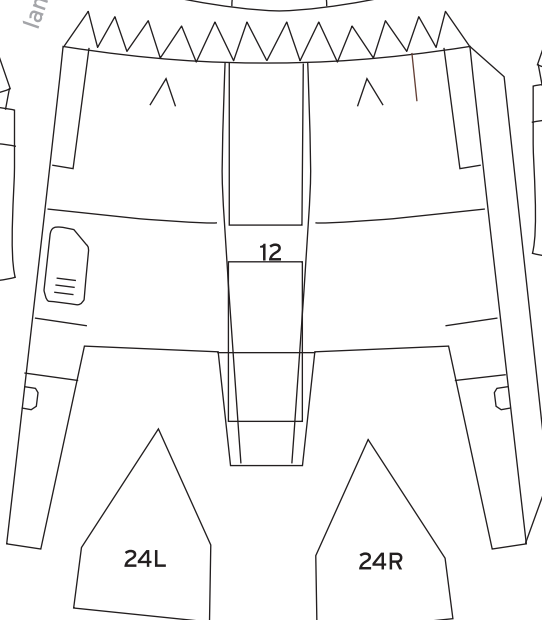


22L



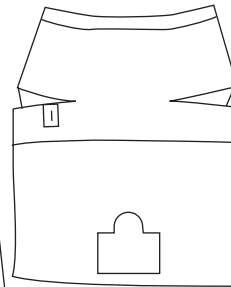
port  
air intake  
plate

model designed by Christoph Stahl 09-2009  
©stahlhart productions

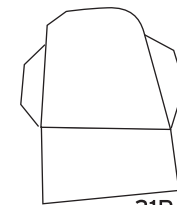


air divider

air divider



22R



starboard  
air intake plate

21R

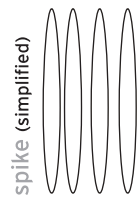
antenna

45

27  
canopy



35

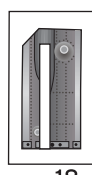


36

coolers



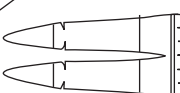
48



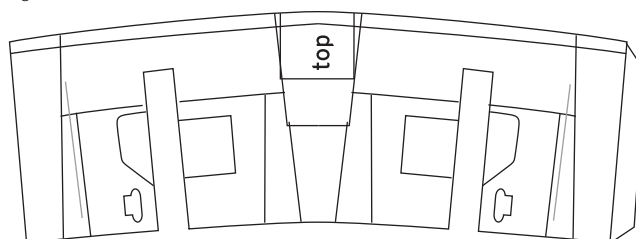
18

brake parachute

37

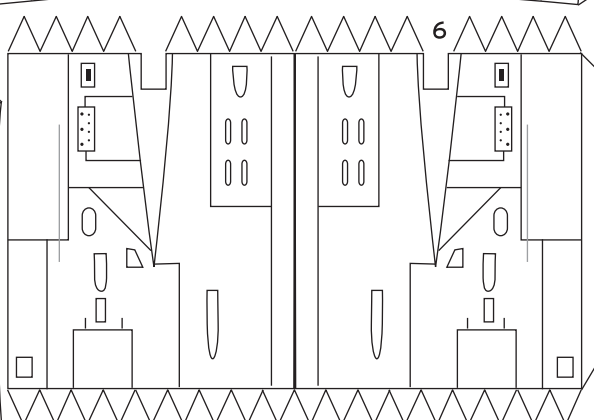


30 tail

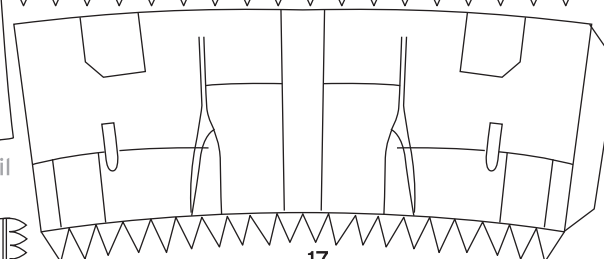


top

6

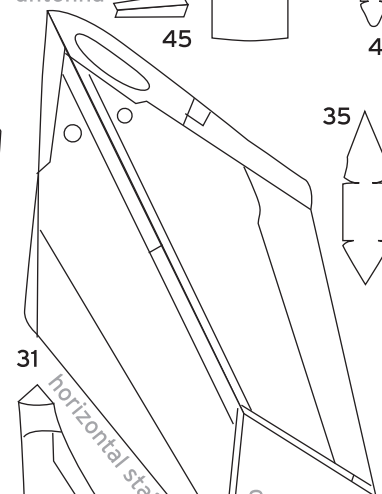


17



STAHLHART Papercraft

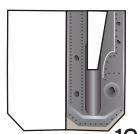
<http://papercraft.stahlhart.net>



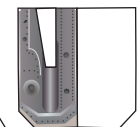
31

horizontal stabilizer

detailed speedbrake



19



19



35

spike (detailed)

21

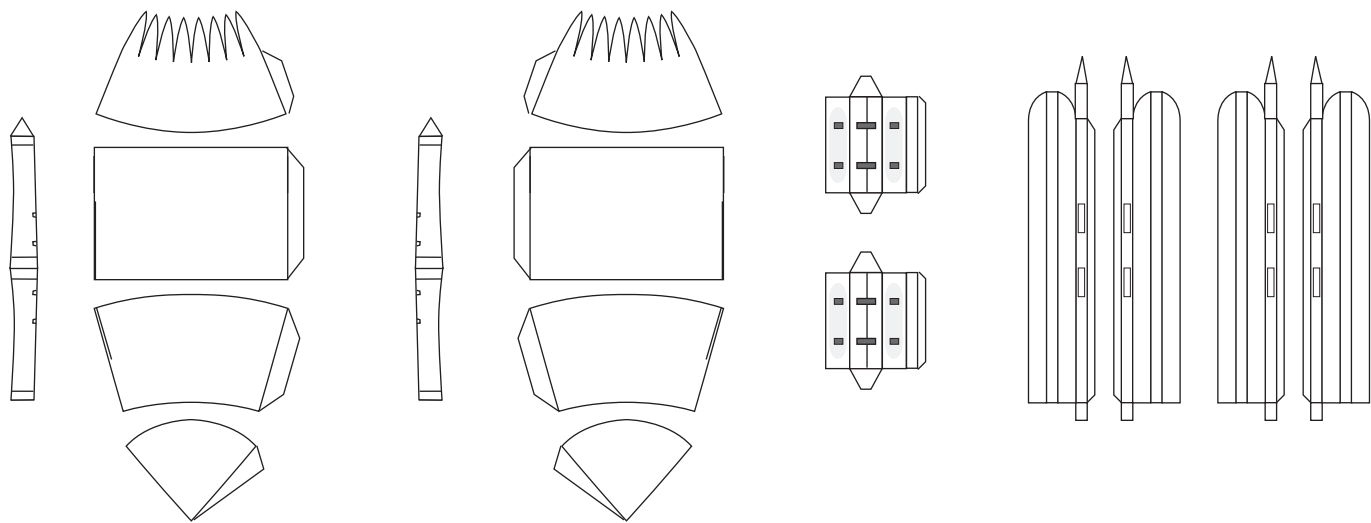


20



18





Small drop tanks for outer wing position  
plus pylons

twin bomb racks  
for central wing pylon

Launch rails for  
air-to-air missiles

南昌 强-5

Nanchang Q-5J