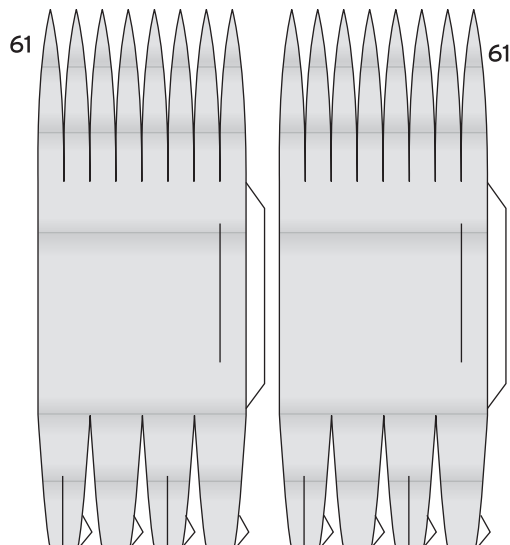
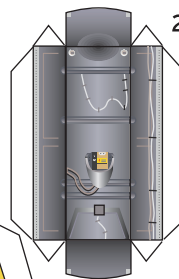
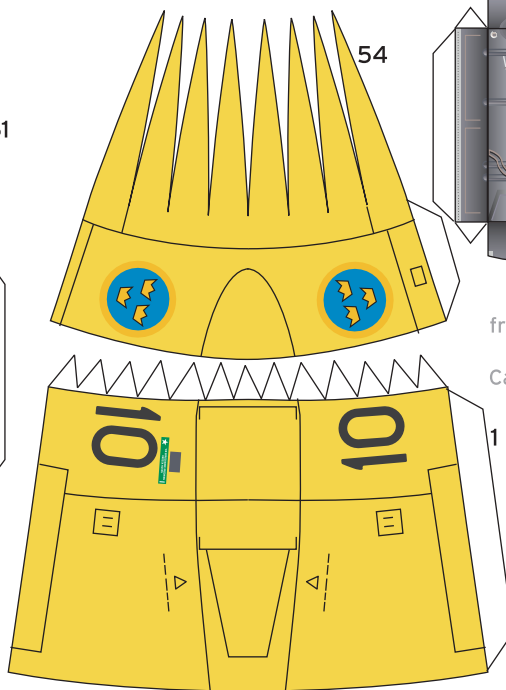


SAAB J35 DRAKEN

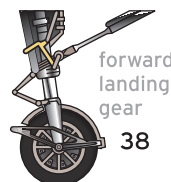
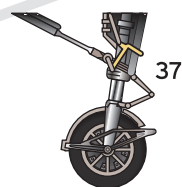


Drop Tanks



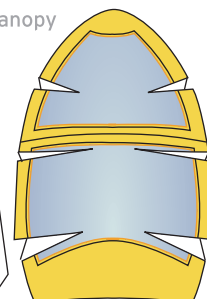
front wheel well

wheel tread



forward landing gear

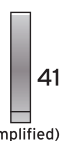
Canopy



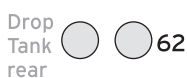
39



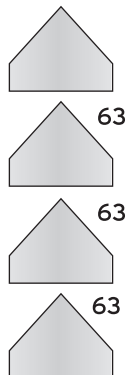
(detailed)



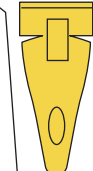
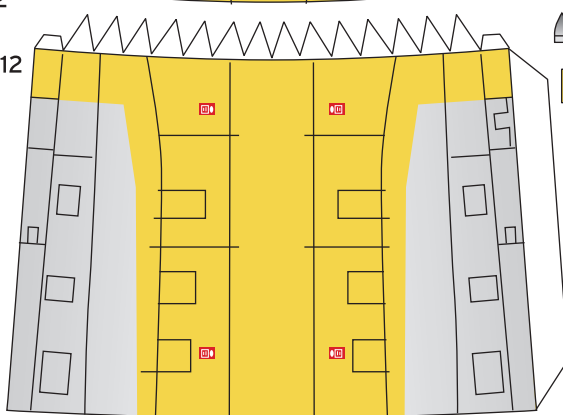
(simplified)



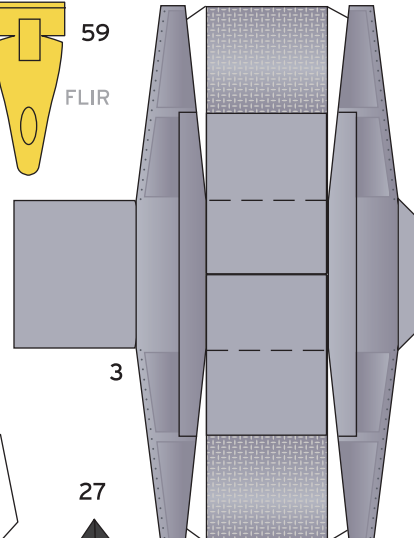
Drop Tank rear



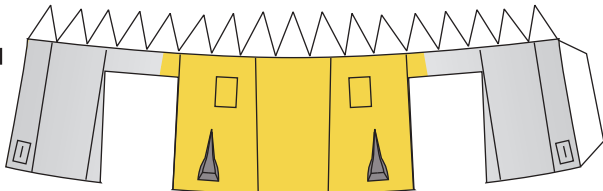
Drop tank fins



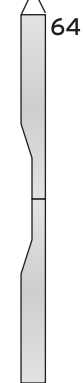
FLIR



3

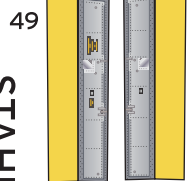


hardpoints



wing stabilizer 13

front landing gear doors

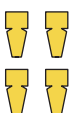


48

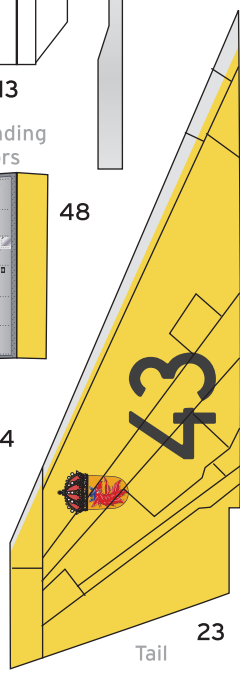
fin



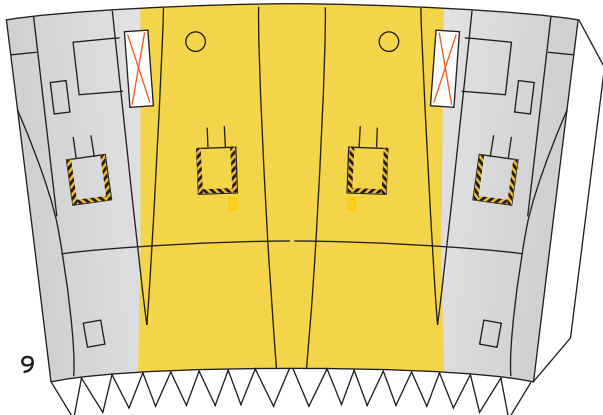
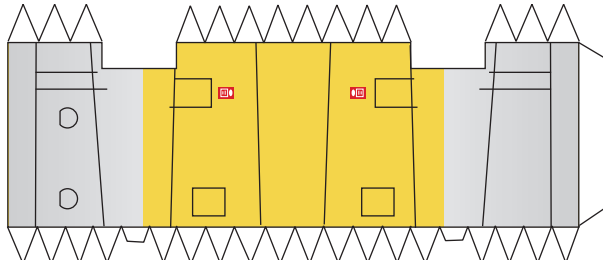
details



28



Tail



model designed by Christoph Stahl 04-2009
©stahlhart productions



fin



main wheel well

4

main wheel well



Tailrider

Tail

22

SAAB J35

DRAKEN

