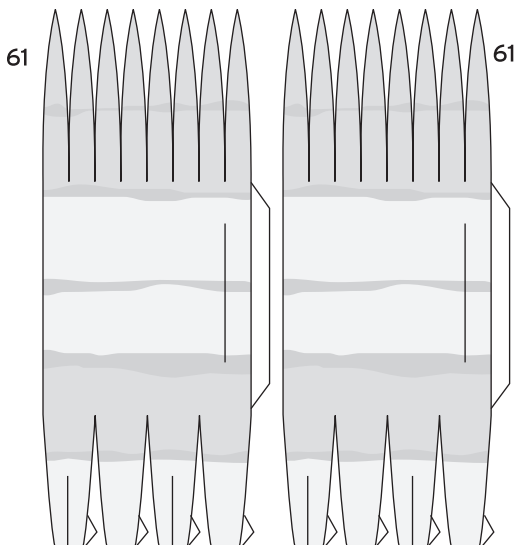


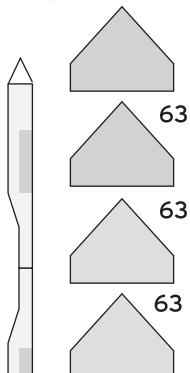
SAAB J35 DRAKEN

SAAB of Sacramento



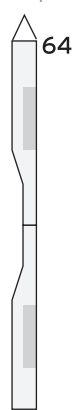
Drop Tanks

Drop Tank rear 62



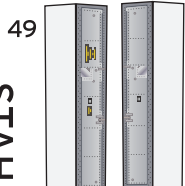
Drop tank fins

hardpoints 64



wing stabilizer 13

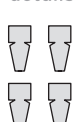
front landing gear doors



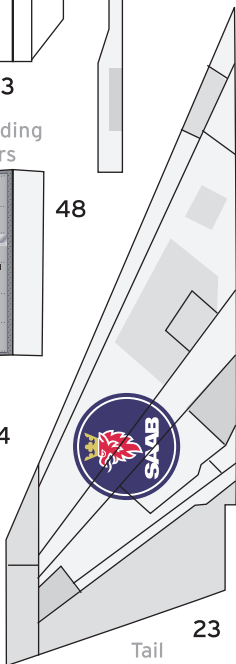
fin

34

details

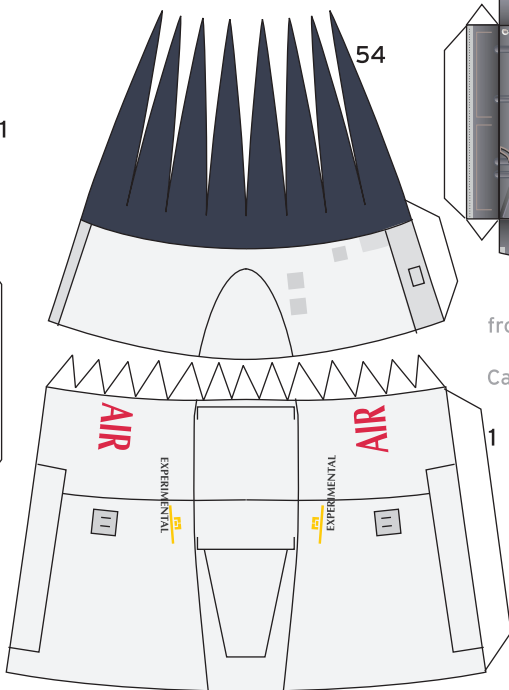


28



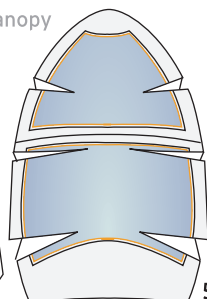
Tail

23



front wheel well

Canopy

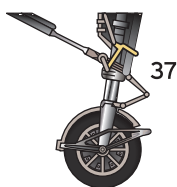


wheel tread

39

40

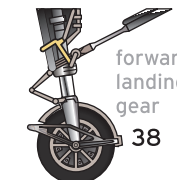
(detailed)



37

forward landing gear

38



(simplified)

fender

41

(detailed)

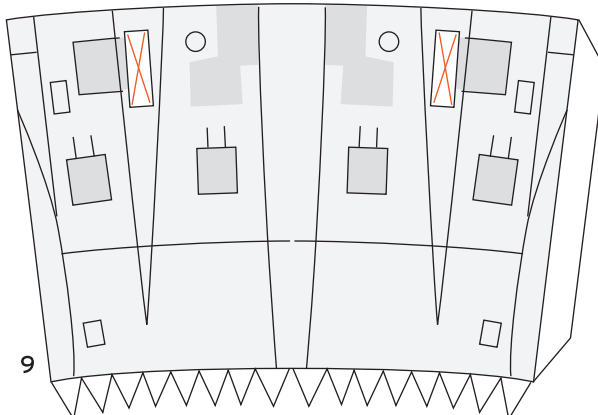
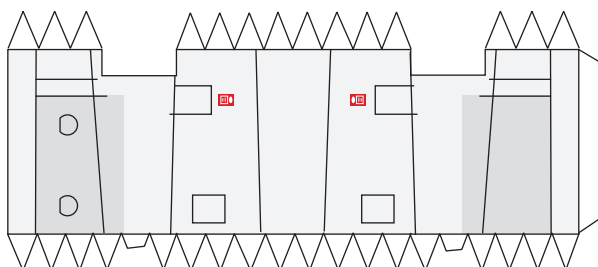
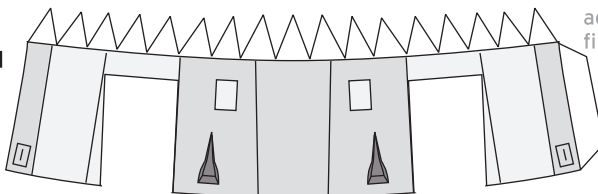
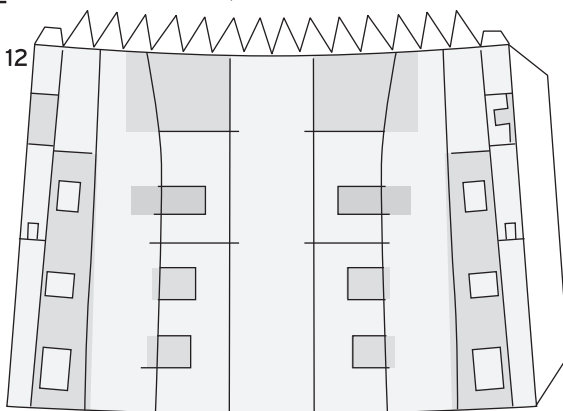
fender

41

(simplified)

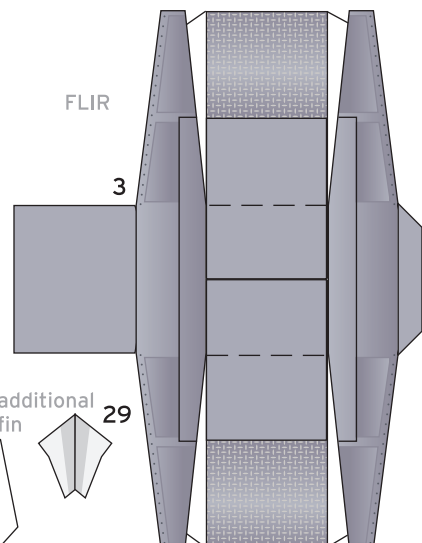
fender

41



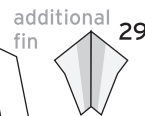
9

model designed by Christoph Stahl 04-2009
©stahlhart productions



FLIR

3



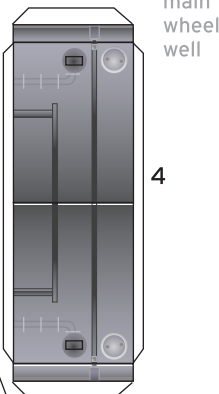
additional fin

29



27

fin



main wheel well

4

main wheel well

24

Tailrider

Tail

22

Tailrider

