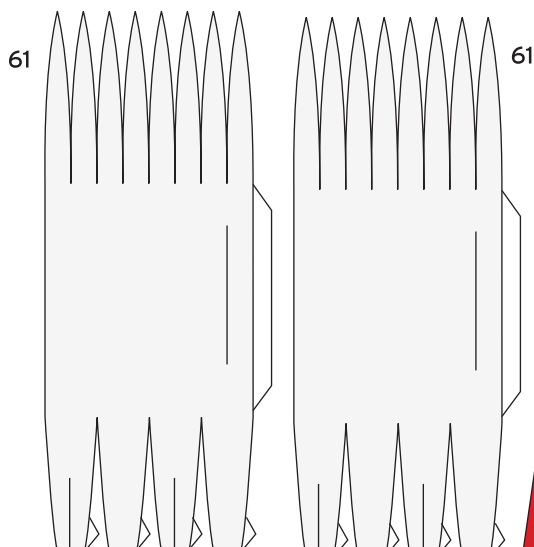
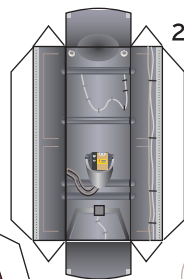
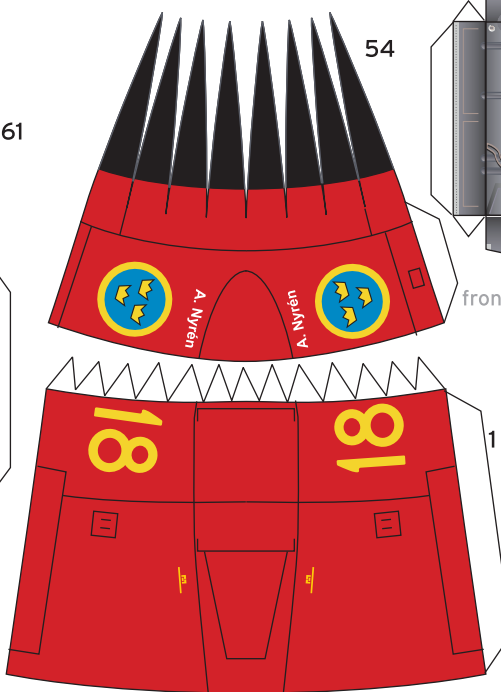


SAAB J35 DRAKEN



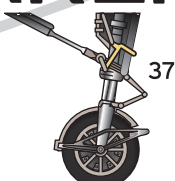
Drop Tanks



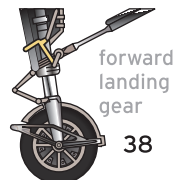
front wheel well



wheel tread

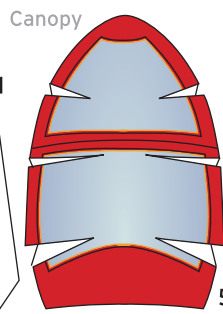


37



forward landing gear

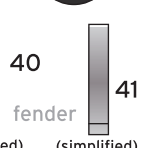
38



Canopy

57

39



40

fender

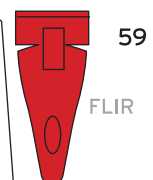
(detailed)

41

(simplified)

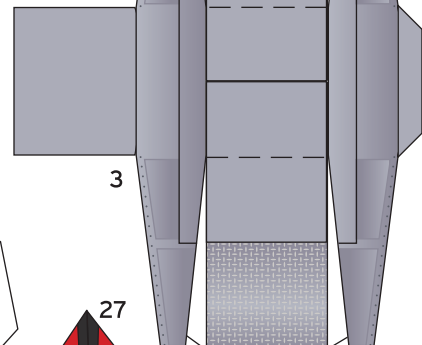


58

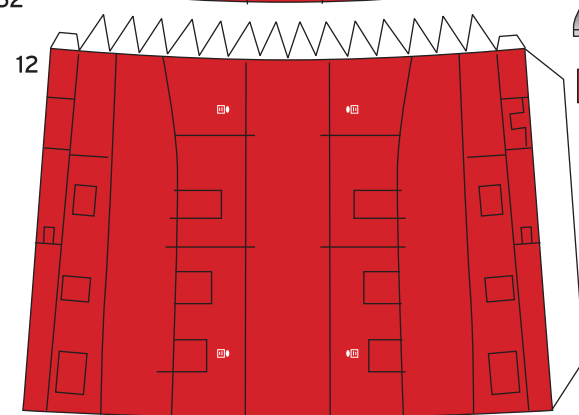


59

FLIR



3



12

11



63

63

63

63

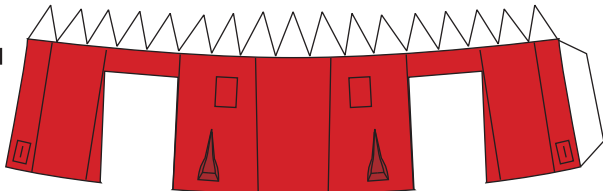
Drop tank fins



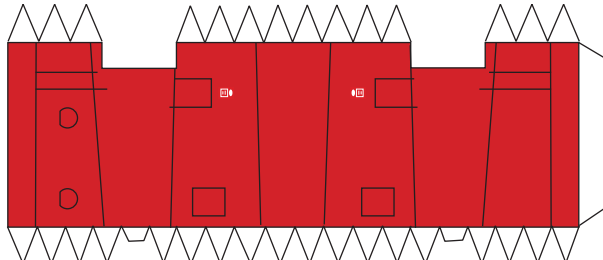
64

hardpoints

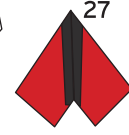
64



10



9



27

fin



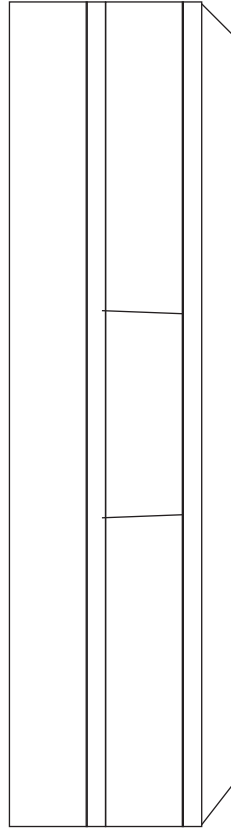
main wheel well

4

main wheel well

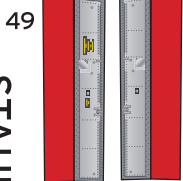
24

Tailrider



wing stabilizer 13

front landing gear doors



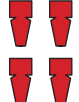
48

49

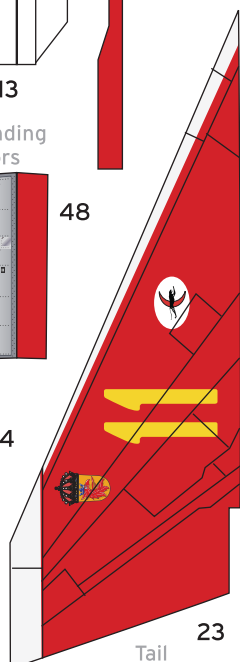
fin

34

details

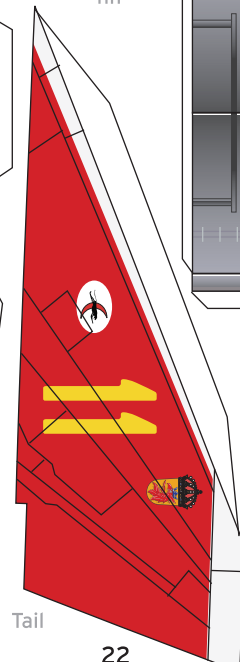


28



Tail

23



Tail

22

