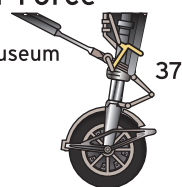


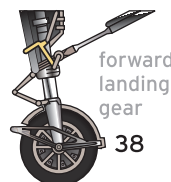


SAAB J35 DRAKEN

Swedish Air Force
as displayed
in Le Bourget museum

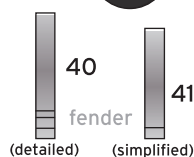


37



forward
landing
gear

38

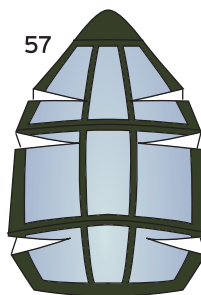


39 40 41
fender
(detailed) (simplified)

front wheel well

wheel
tread

Canopy



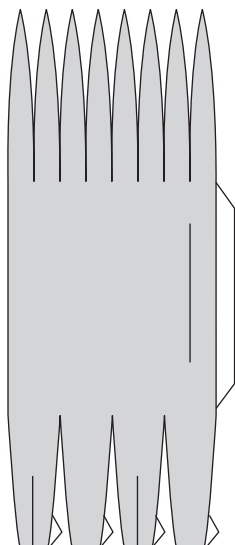
57

39

40

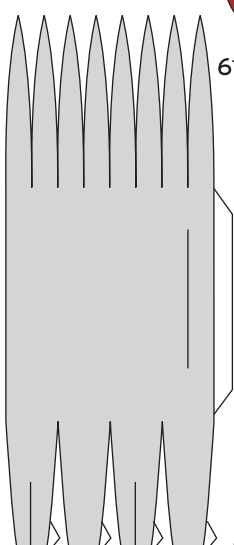
41

61



Drop Tanks

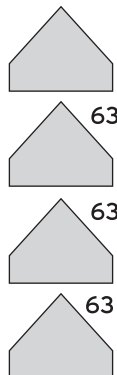
61



Drop
Tank
rear



62

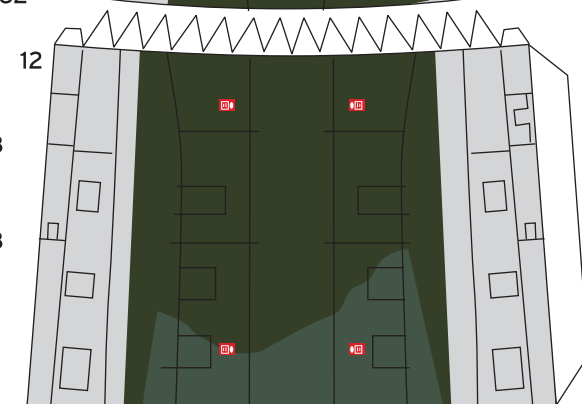


Drop tank
fins

64

hardpoints

64



12

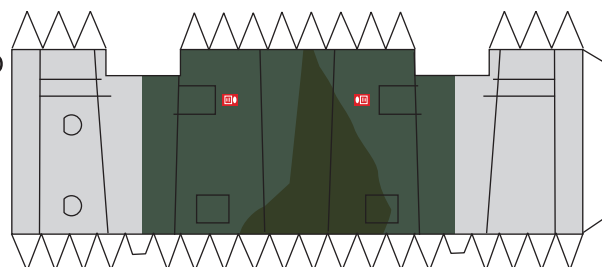
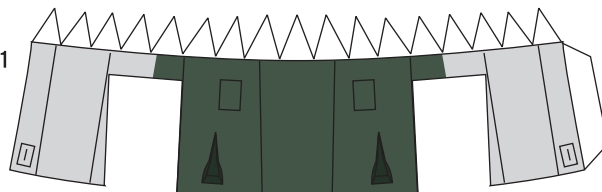
63

63

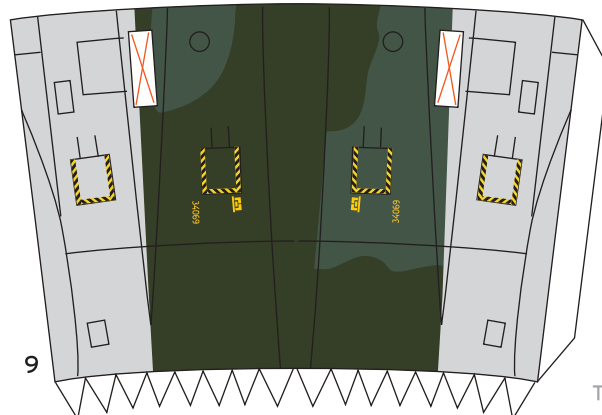
63

63

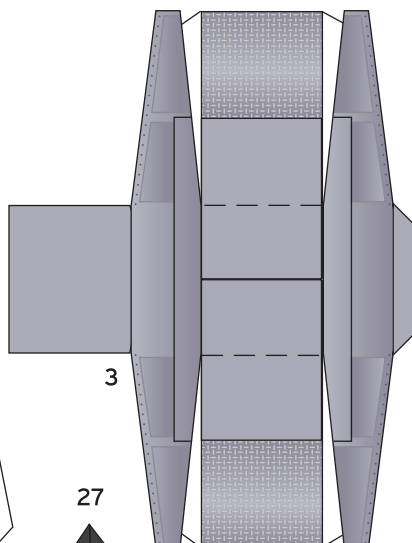
11



10



9



3

27



fin

main
wheel
well



4

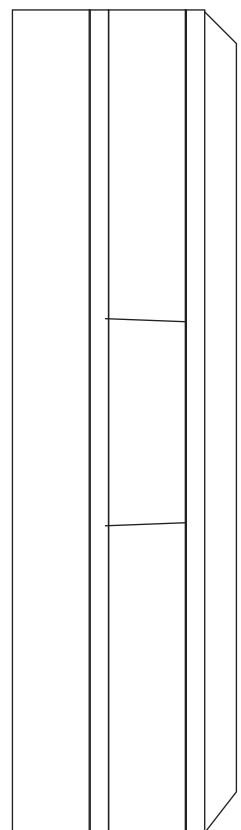
main
wheel
well

24

Tail
antenna



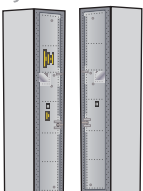
Tailrider



wing stabilizer 13

front landing
gear doors

49



48

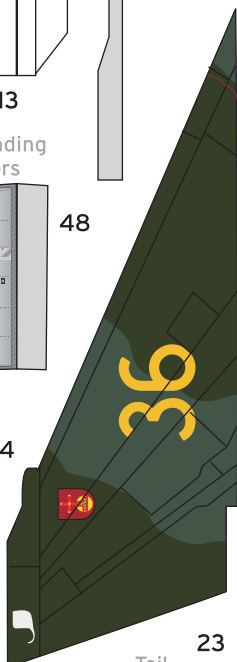
fin

34

details



28



Tail

23

Tail

22

SAAB J35

DRAKEN

