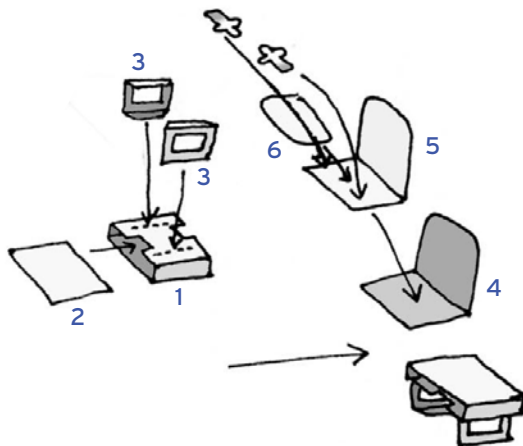


Martin Marauder cockpit instructions

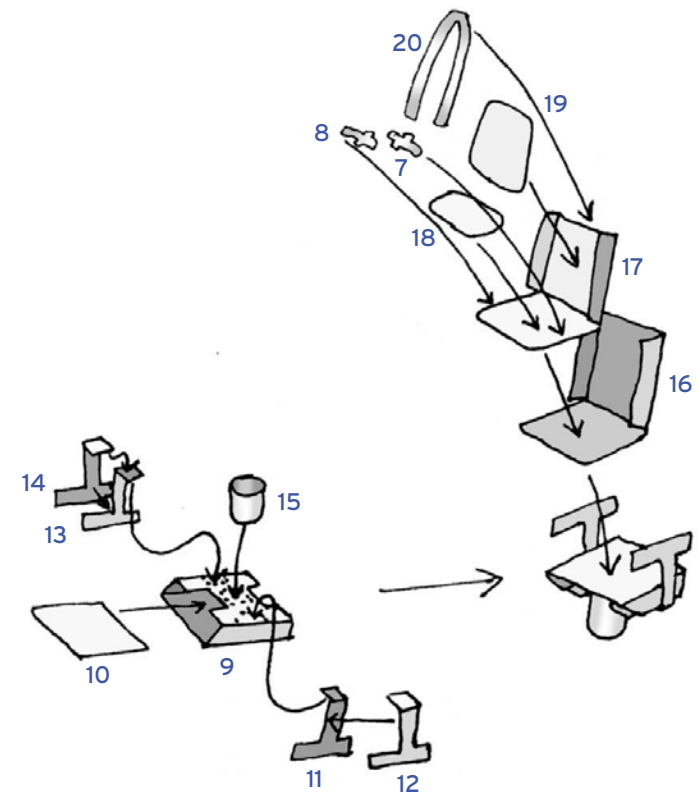
Part designations use **blue numbers** so they are not mixed up with parts of the aircraft model

Parts from the Marauder model are given in brackets

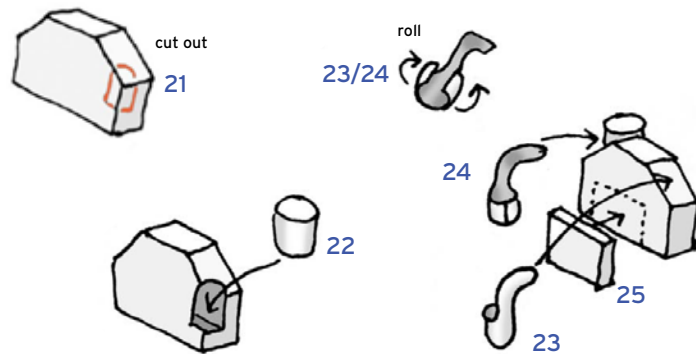
1. Small seat



2. Standard seats 3x!



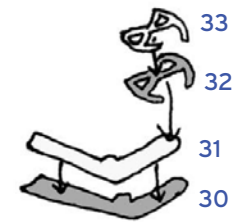
3. Bombsight



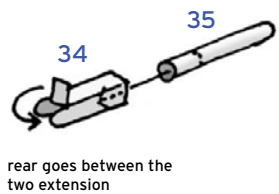
4. Pilot's steering wheel



5. Co-pilot's steering wheel

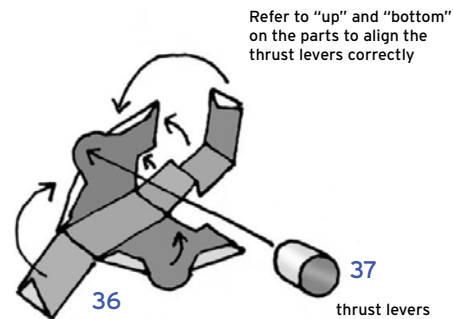


6. Nose gun

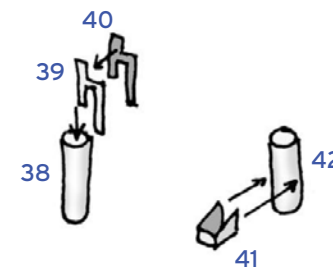


(not required for JM-1/2)

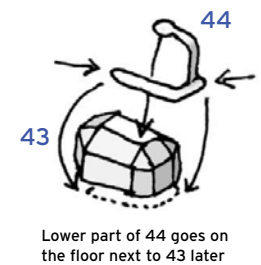
7. Central console



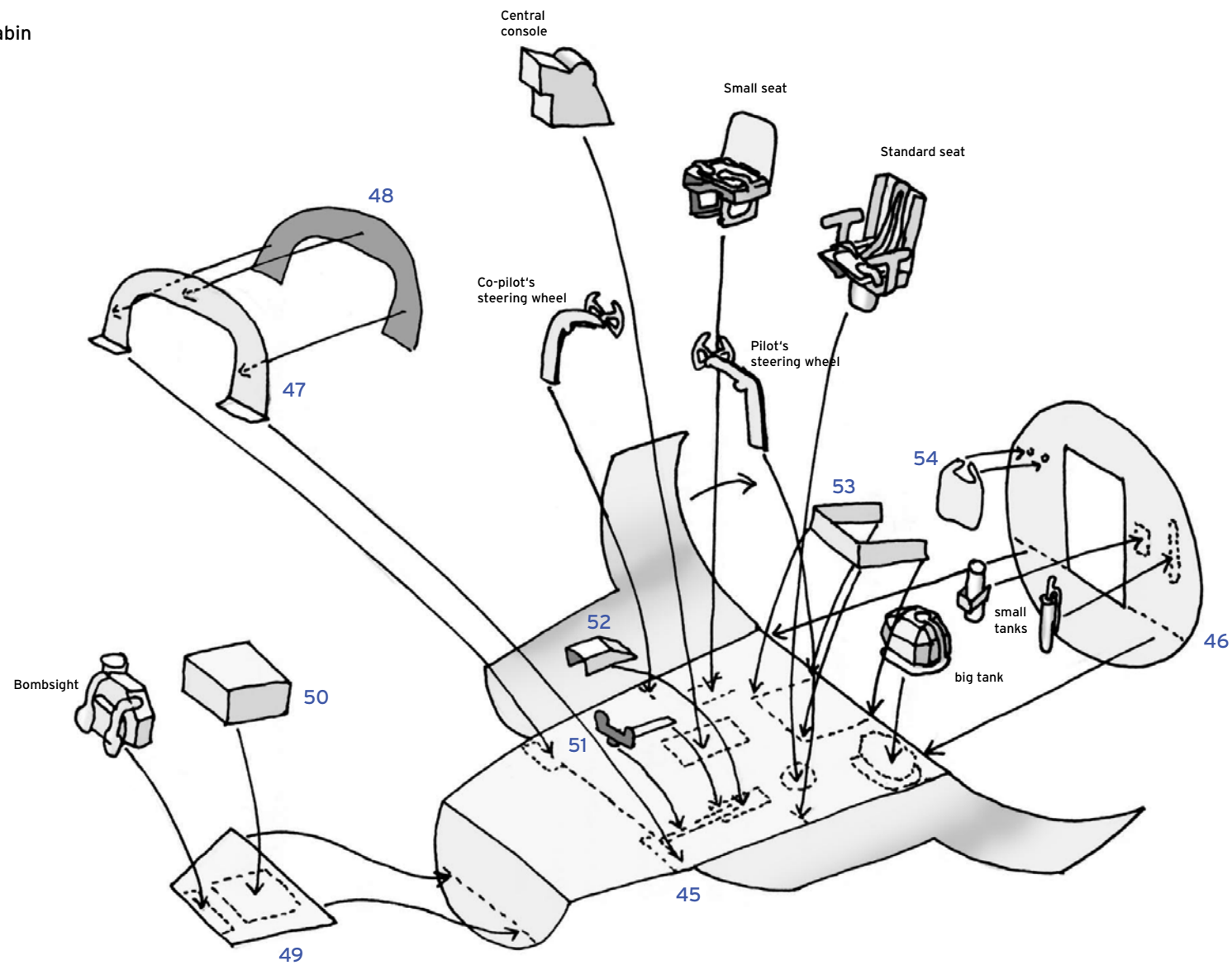
8. Small tanks



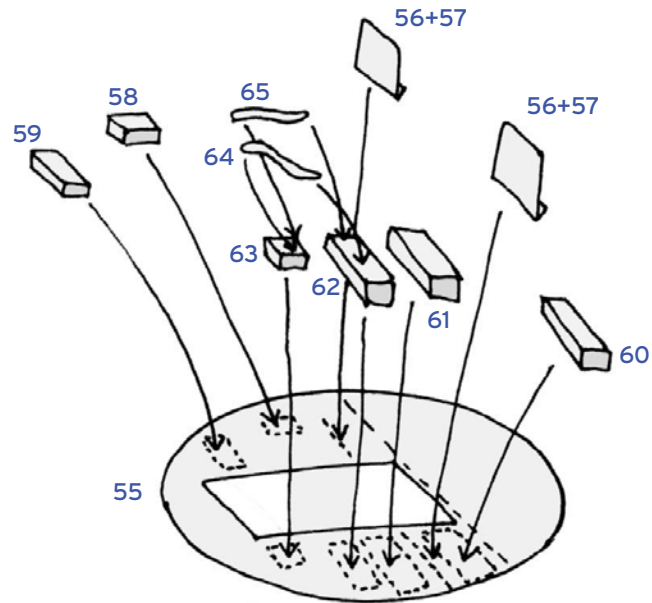
9. Big tank



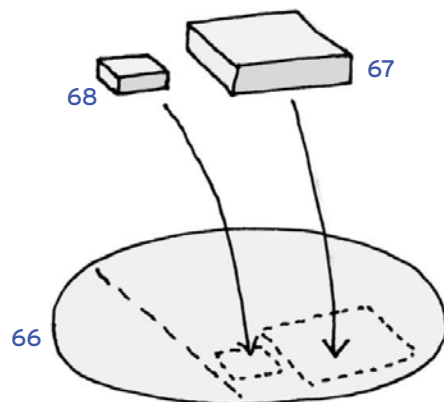
10. Main cabin



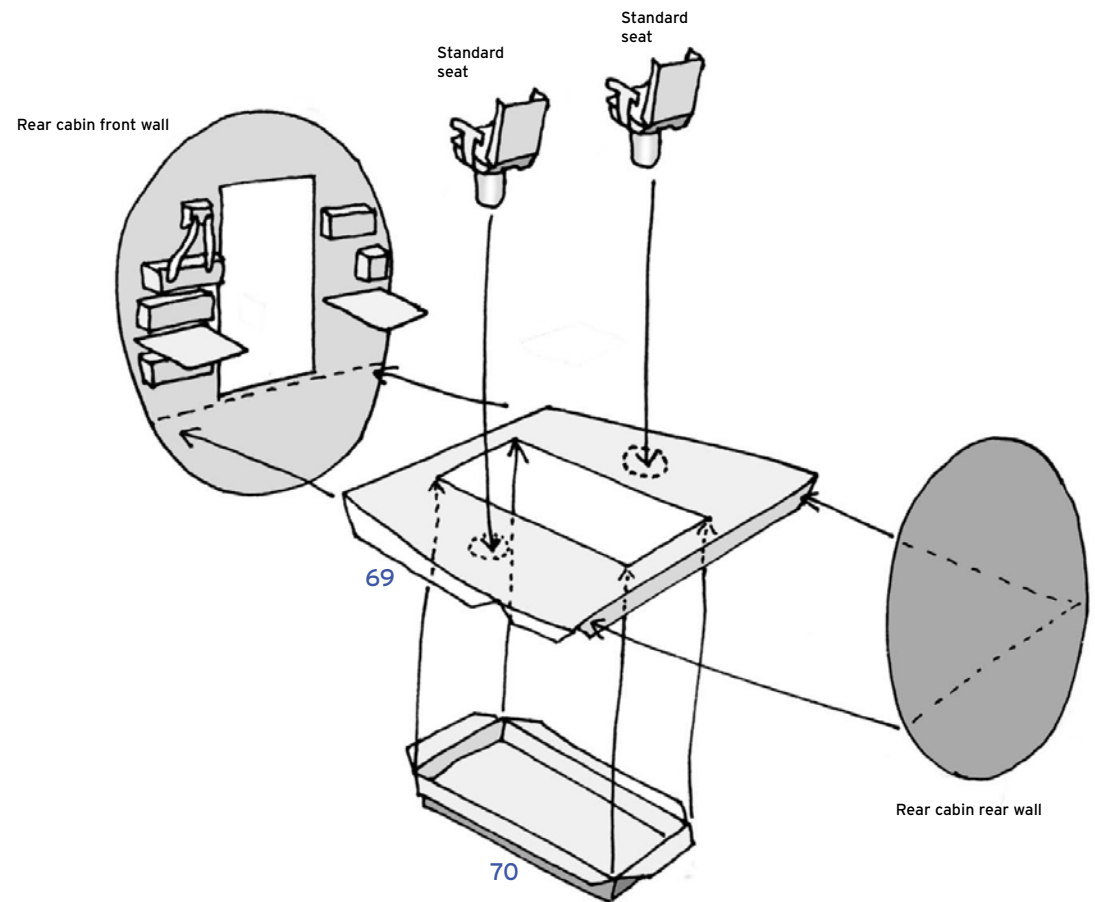
11. Rear cabin front wall



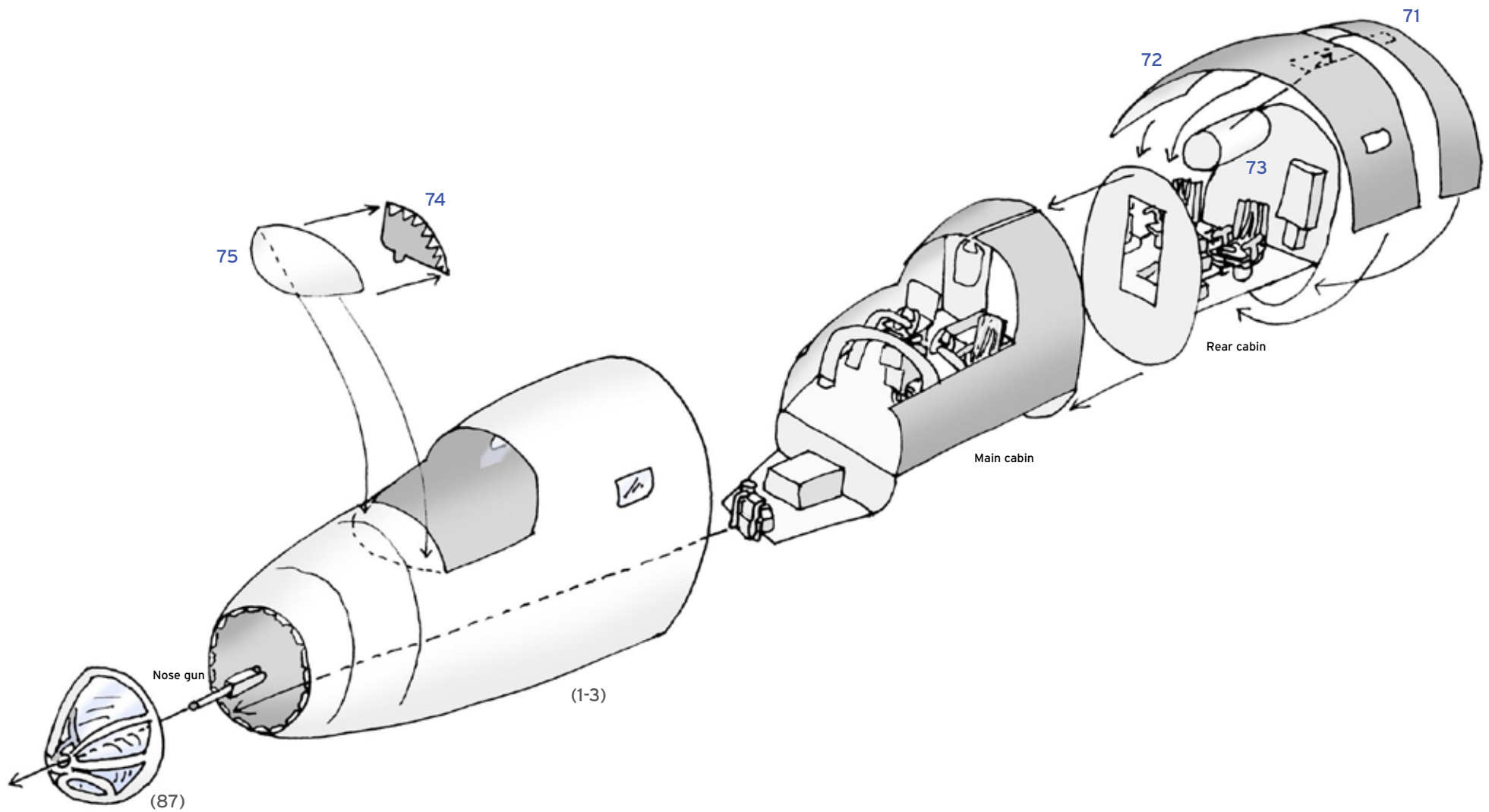
12 Rear cabin rear wall



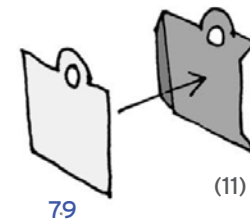
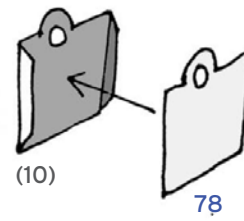
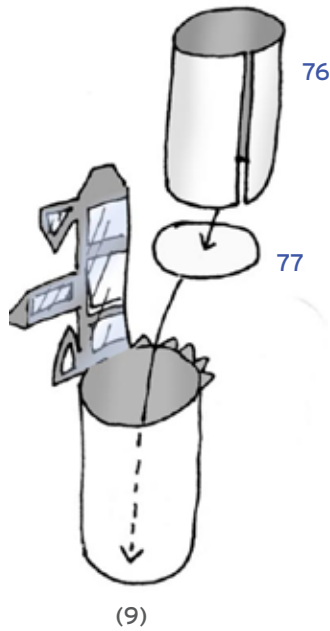
13. Rear cabin assembly



14. Installing both cabins



15. Inner sides for the turret



16. Rear gunner's cabin

