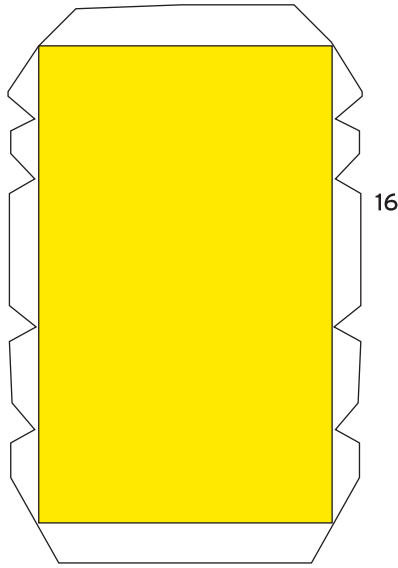
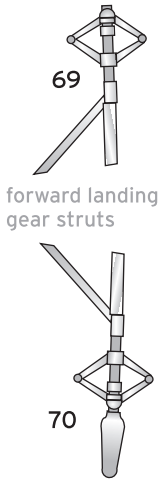


1:60 scale / WSAM = 100%



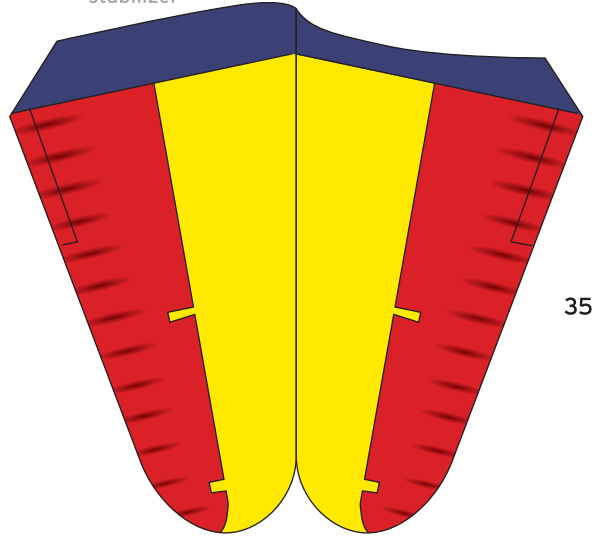
Instructions
downloaded
separately!

JM-2

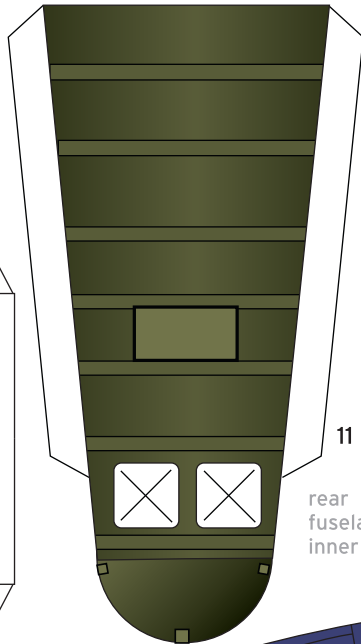
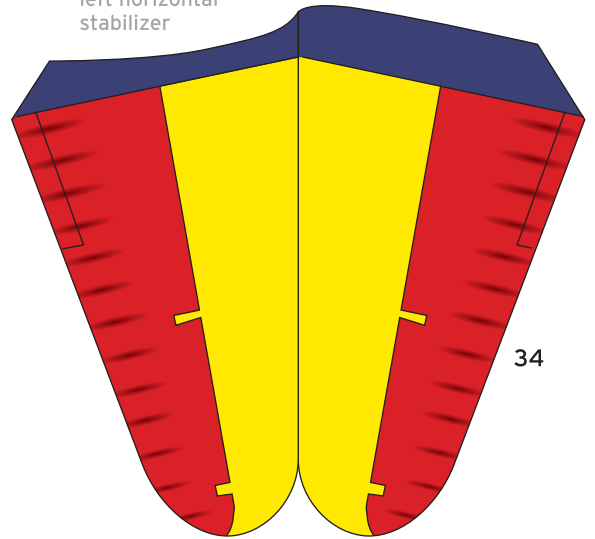


Lower stabilizer
piece

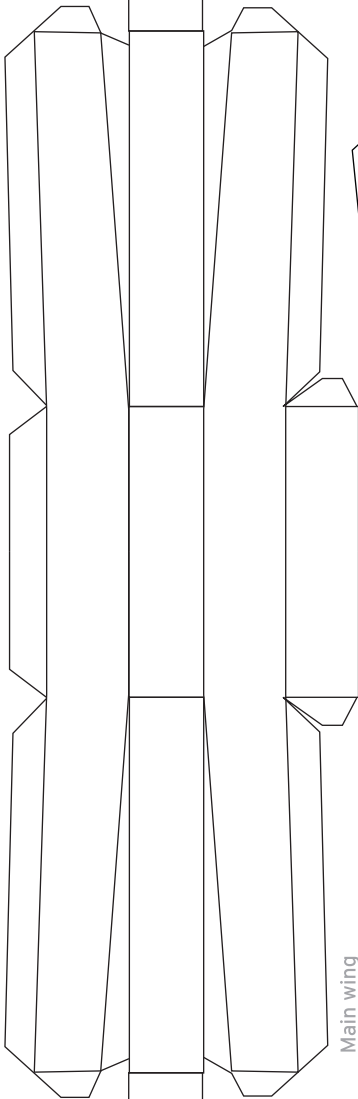
right horizontal
stabilizer



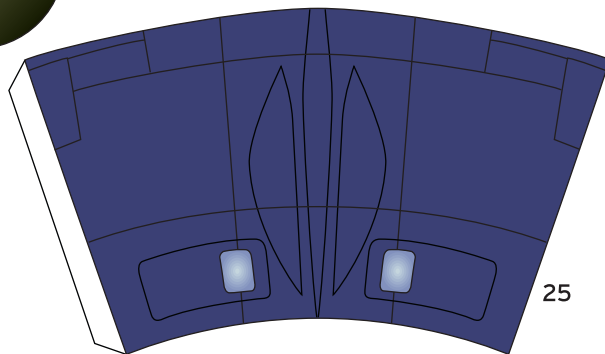
left horizontal
stabilizer



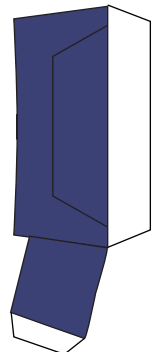
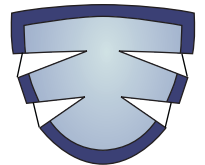
rear
fuselage
inner layer



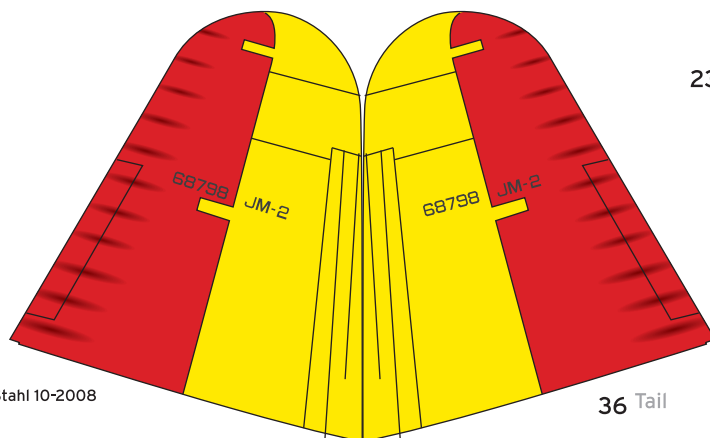
Main wing
inner stabilizer



Rear Observer
Cabin



23



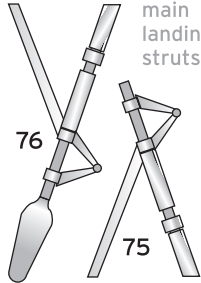
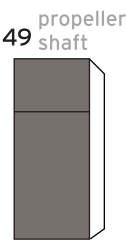
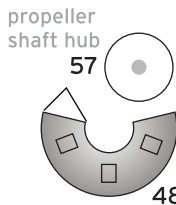
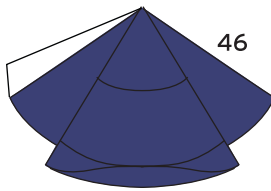
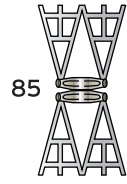
Turret lower end

model designed by Christoph Stahl 10-2008
©stahlhart productions

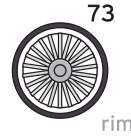
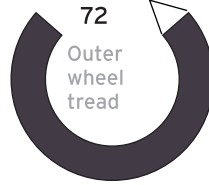
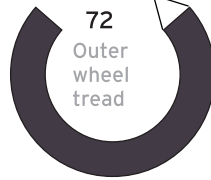
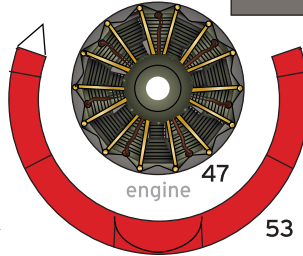
36 Tail

24

landing gear
detail (optional)



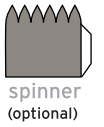
main
landing gear
struts



exhaust

JM-2

propeller front part

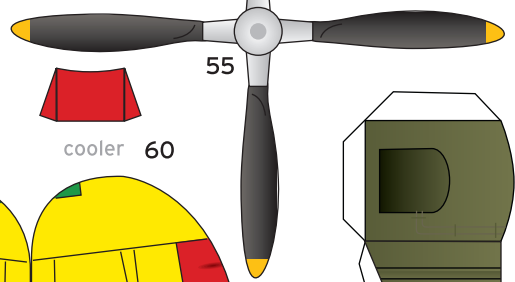


spinner
(optional)



cooler

propeller back part

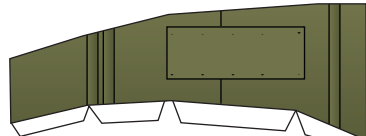


exhaust

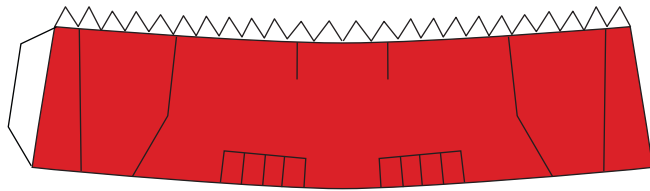
exhaust



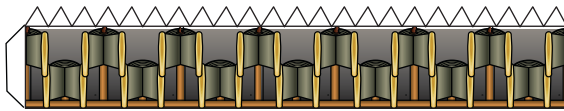
cooler



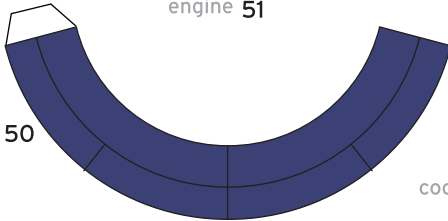
landing gear well



52



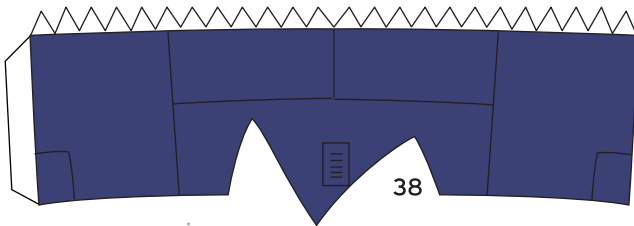
engine 51



50

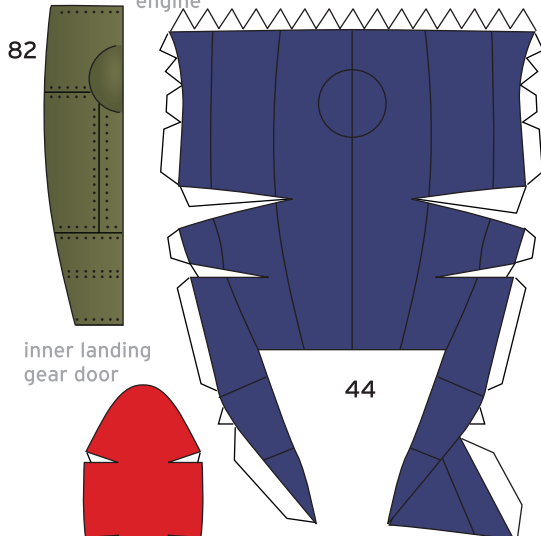


58
cooler



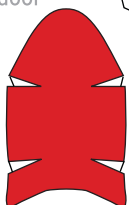
38

engine

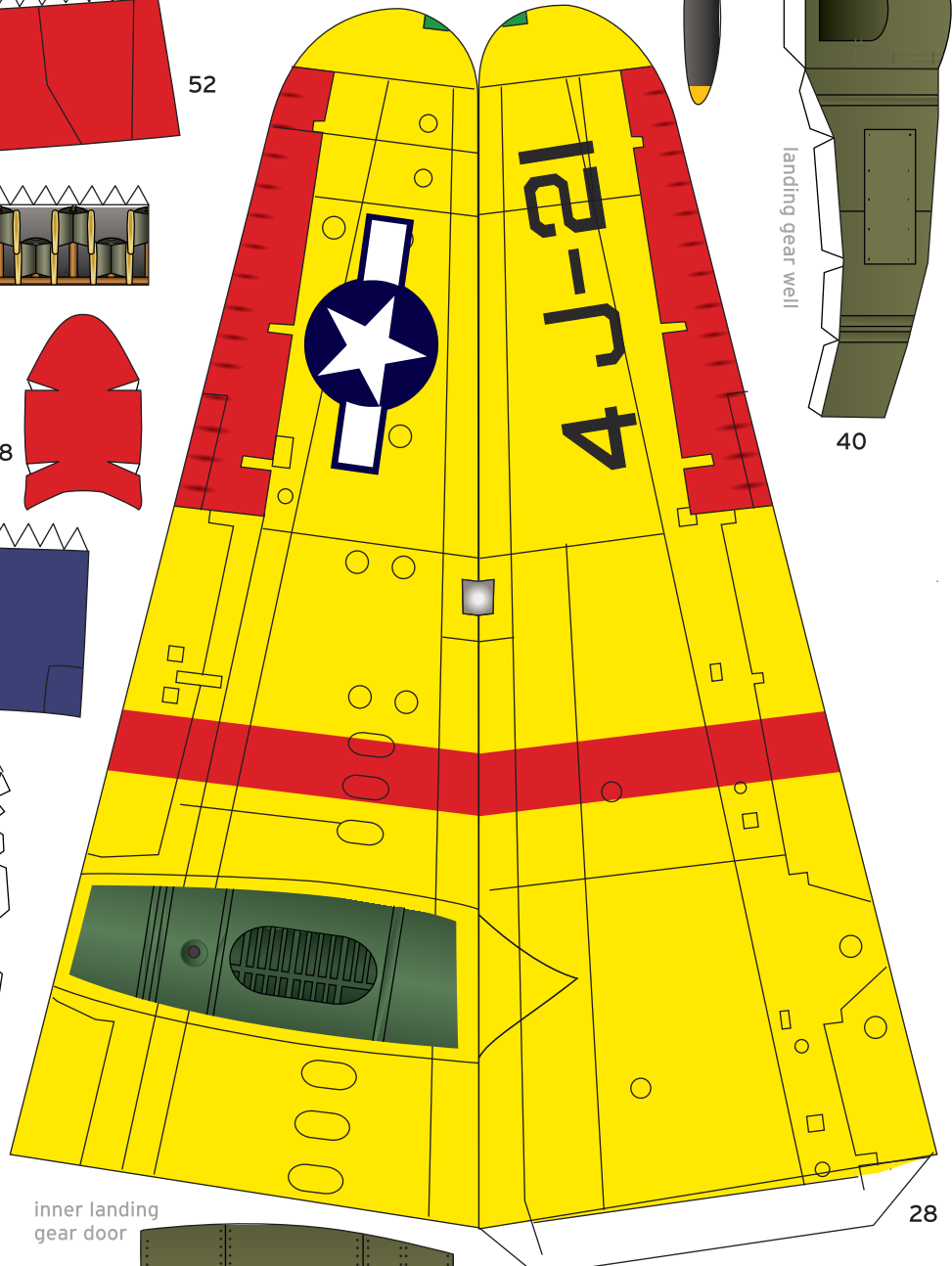


44

inner landing
gear door

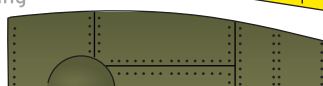


58 cooler



28

inner landing
gear door



83

model designed by Christoph Stahl 10-2008
©stahlhart productions

STAHLHART Papercraft
<http://papercraft.stahlhart.net>

JM-2

