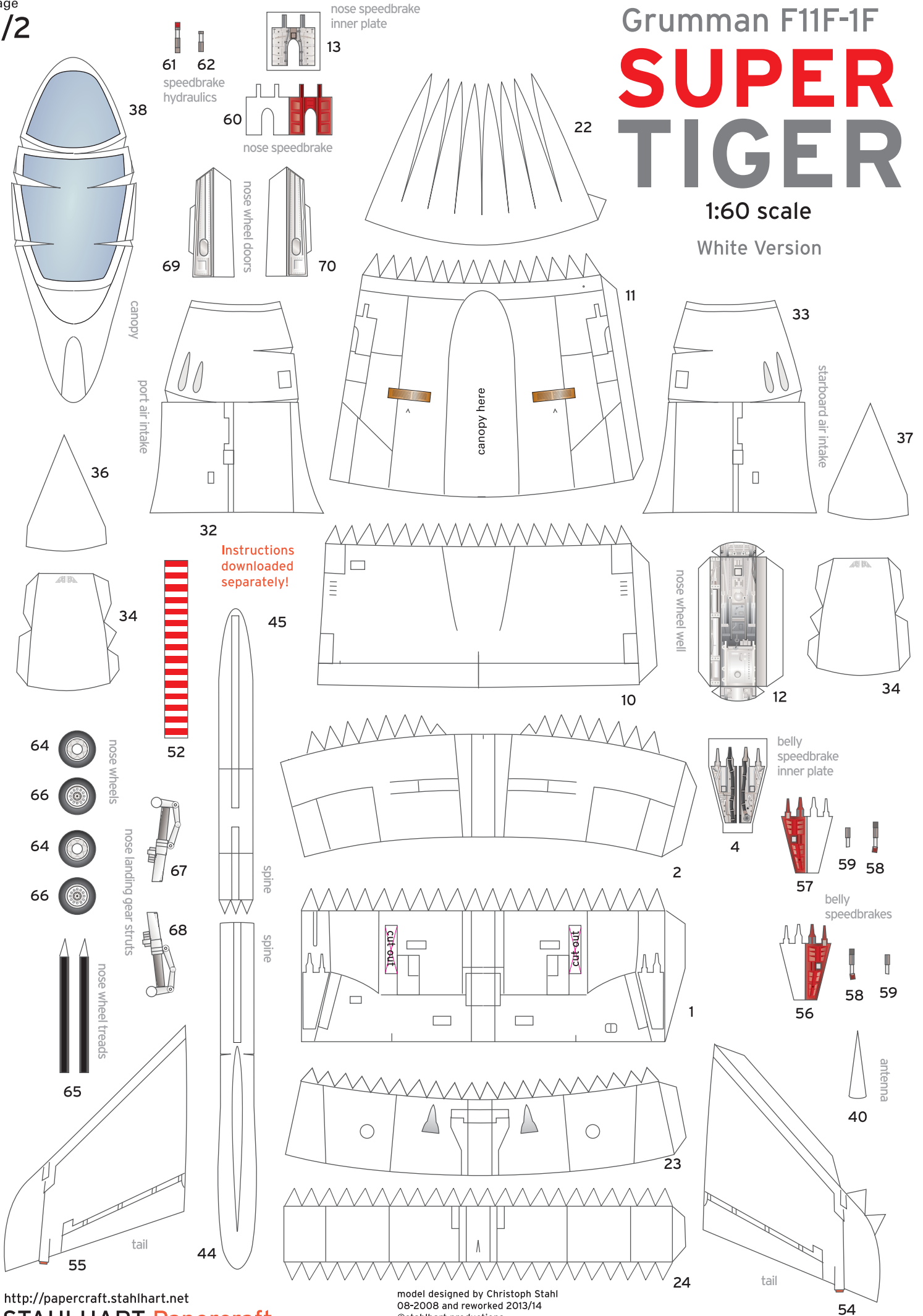


Grumman F11F-1F SUPER TIGER

1:60 scale

White Version



main landing gear struts

71

39

port wing fence

wheels

3

starboard wing fence

71

main landing gear struts

73

wheels

75

model designed by Christoph Stahl
08-2008 and reworked 2013/14
©stahlhart productions

Grumman F11F-1F

SUPER TIGER

wheel treads

72

glue inside gear shaft

glue inside gear shaft

wheel well detail

9

wheel well detail

8

main landing gear door

main landing gear door

63

wing wold

wing wold

63

main landing gear door

19

21

main wheel wells

5

landing gear rear struts

77

76

port wing (lower side)

starboard wing (lower side)

25

aileron detail

49

48

47

aileron detail

47

48

49

horizontal stabilizer

30

horizontal stabilizer

31

elevator detail

41

42

43

elevator detail

43

42

41

port ventral fin

55

53

46

29

jet exhaust

27

28

50

51

tailbumper

arrestor hook

53

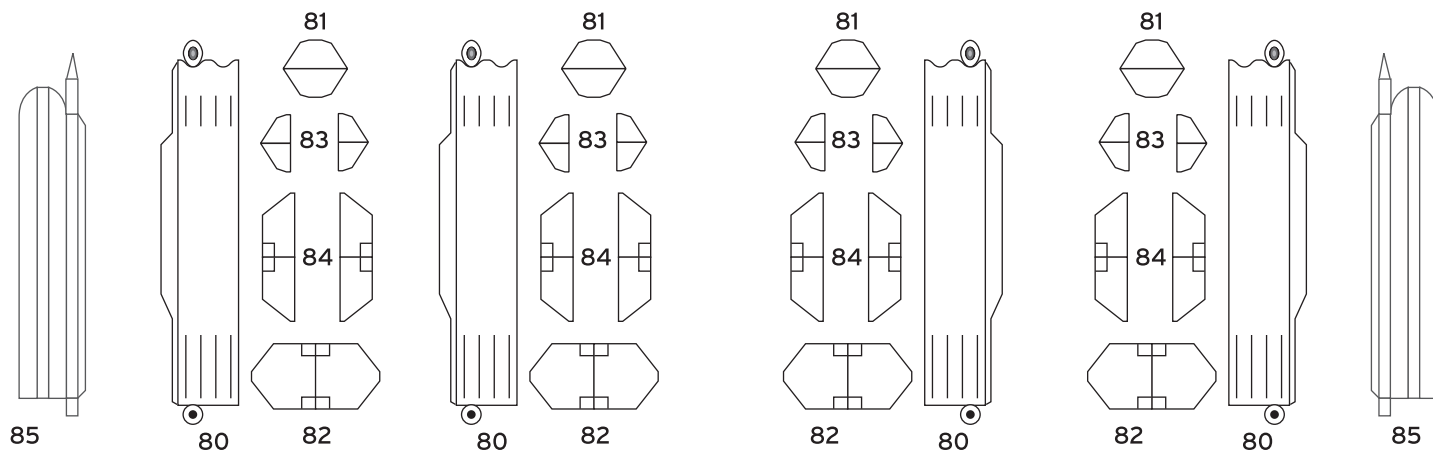
55

starboard ventral fin

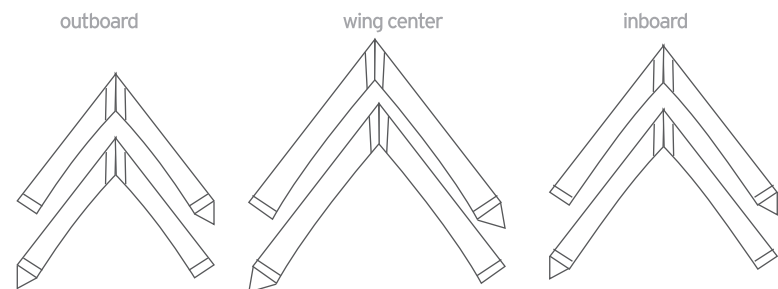
STAHLHART Papercraft

<http://papercraft.stahlhart.net>

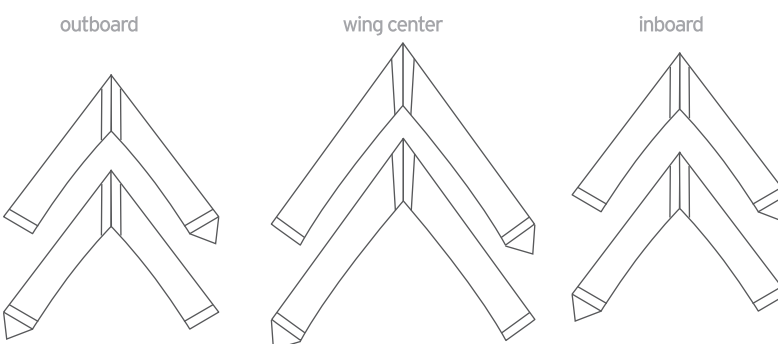
Sidewinder missiles for spine and belly:



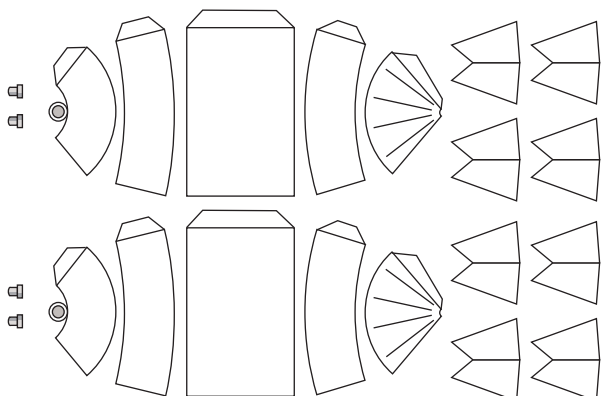
Pylons for carrying Sidewinder missiles



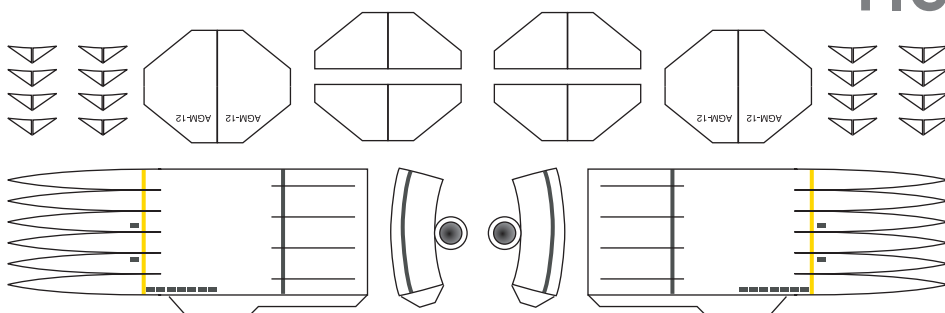
Pylons for other ordnance (Tank etc.)



Inert Mk.83 Bombs



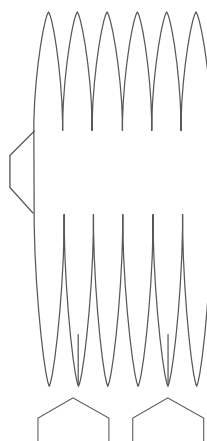
AGM-12 Bullpup Air-to-Ground Missiles



Belly pylon



Belly Drop Tank



Grumman F11F-1F
**SUPER
TIGER**

Drop Tanks

