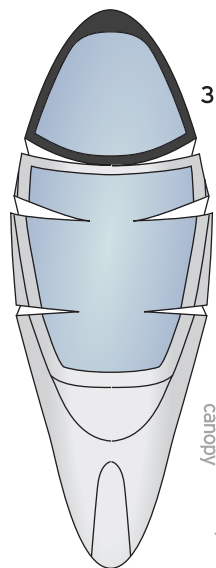


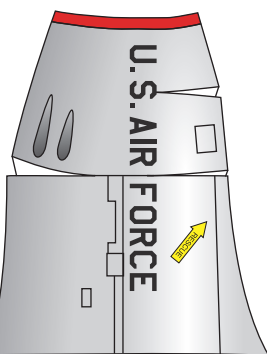
Grumman F11F-1F SUPER TIGER

1:60 scale

U.S. Air Force, TAC



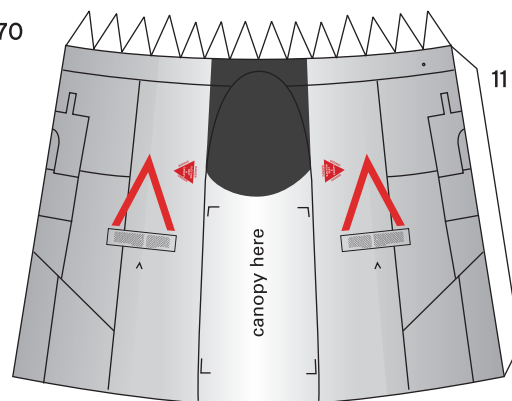
38



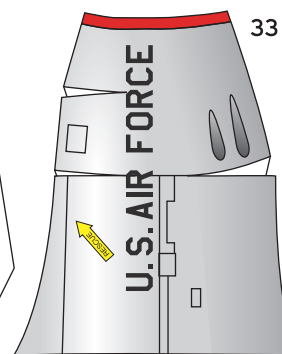
canopy

port air intake

32

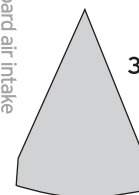


11

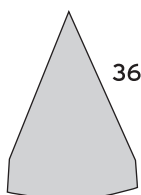


starboard air intake

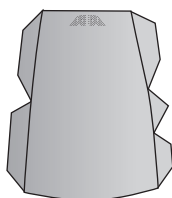
33



37



36



34



52

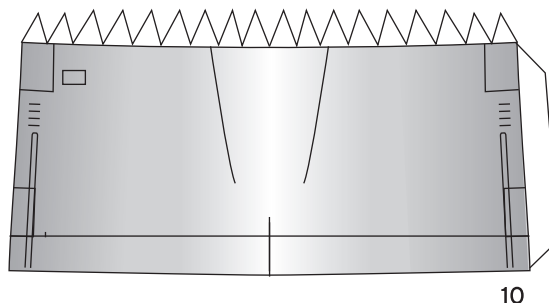


45

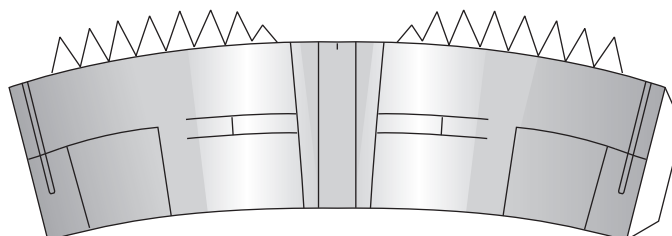


spine

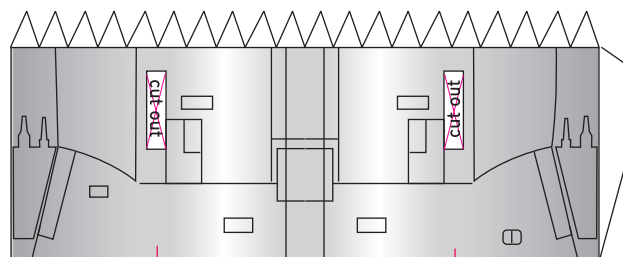
spine



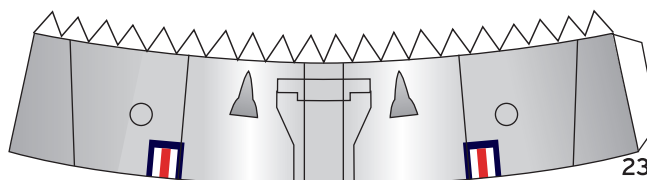
10



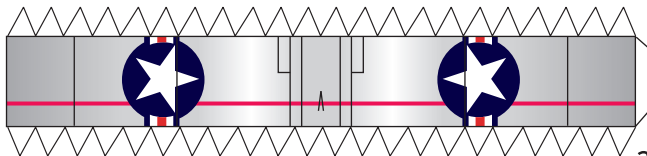
2



1

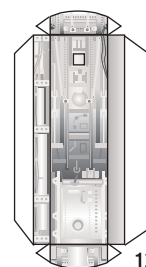


23

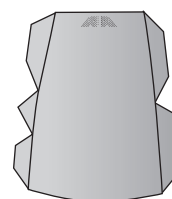


24

nose wheel well



12

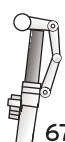


34



nose wheels

nose landing gear struts



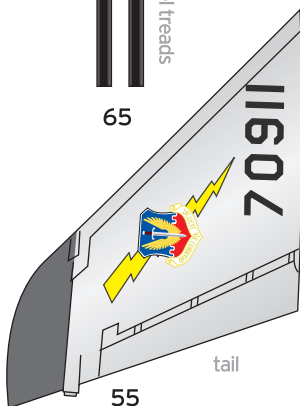
67

68



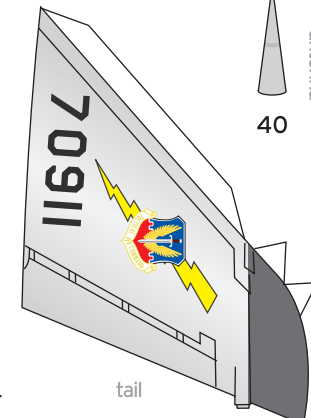
nose wheel treads

65



55

tail

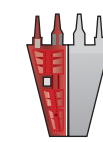


tail

54



4



57

belly speedbrakes



56

58

59

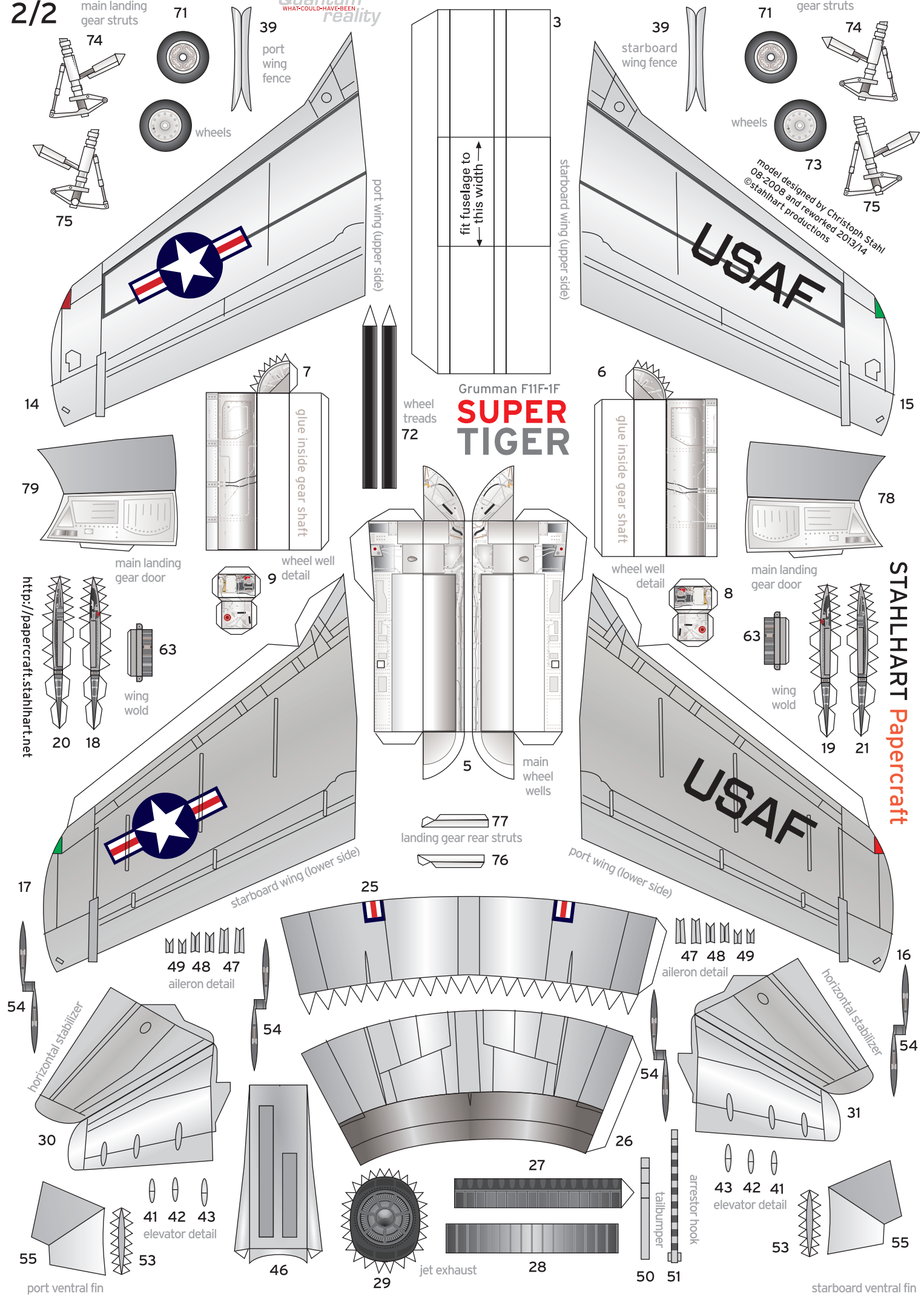
58

59

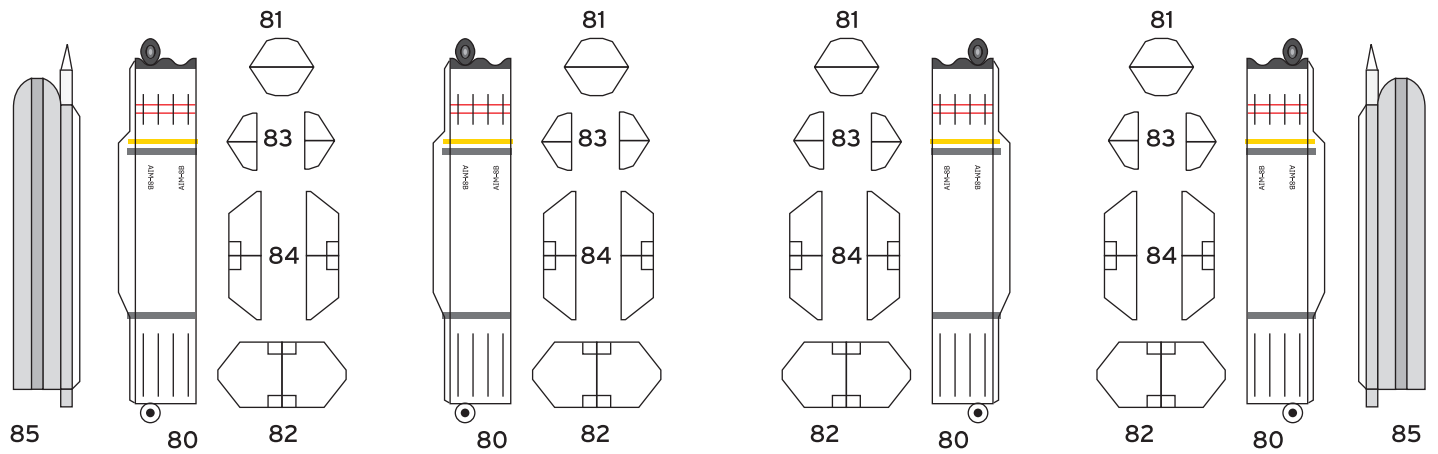
40

antenna

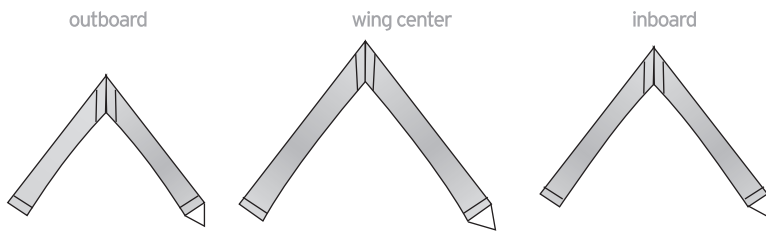
Instructions
downloaded
separately!



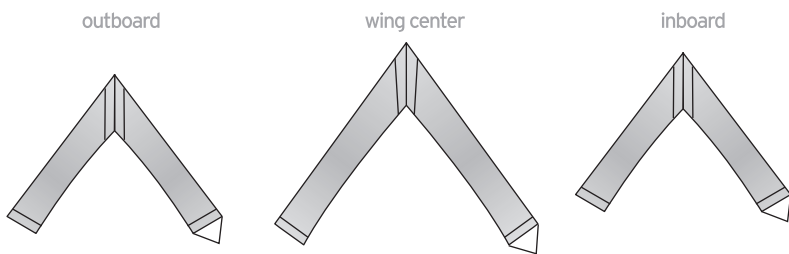
Sidewinder missiles for spine and belly:



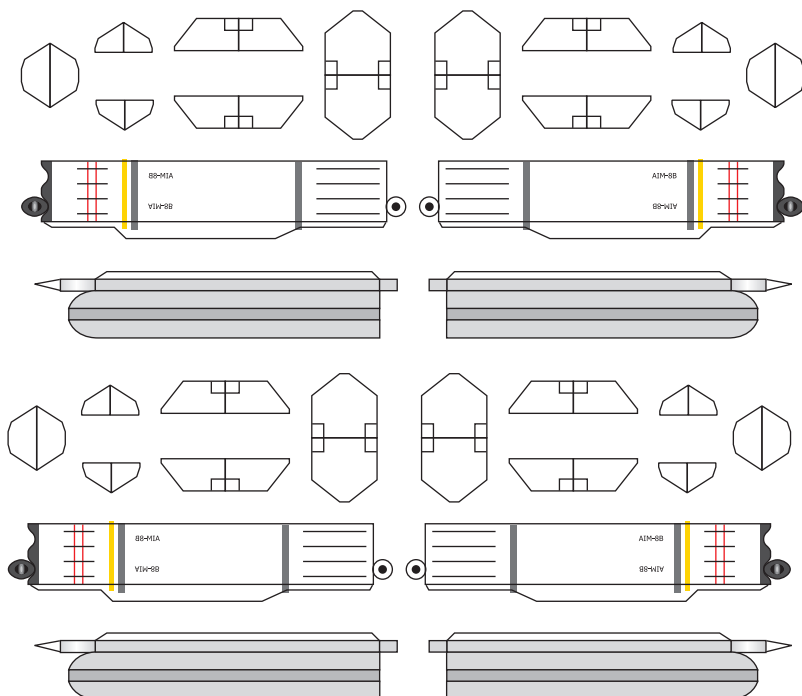
Pylons for carrying Sidewinder missiles



Pylons for other ordnance (Tank etc.)



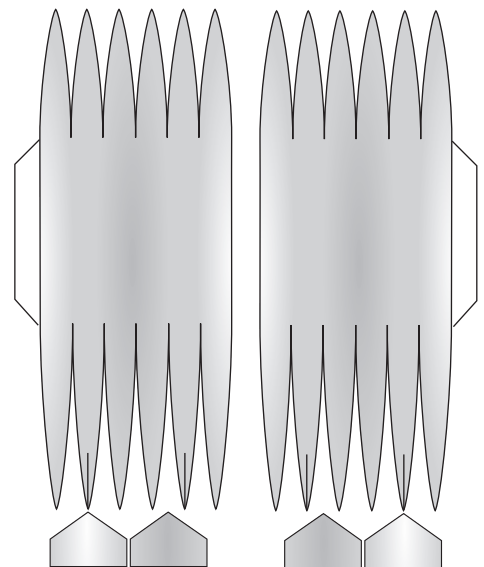
Additional Sidewinders



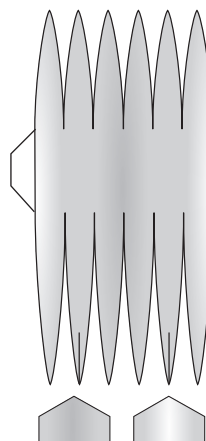
Belly
pylon



Drop Tanks



Belly
Drop
Tank



Grumman F11F-1F
**SUPER
TIGER**

