

# Grumman F11F-1F SUPER TIGER

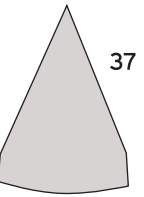
1:60 scale

Bundesluftwaffe,  
JG 71 "Richthofen"

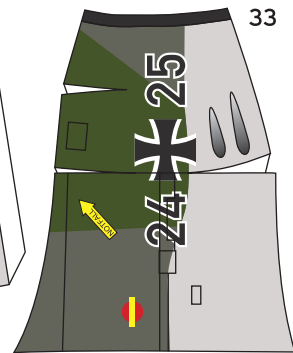


starboard air intake

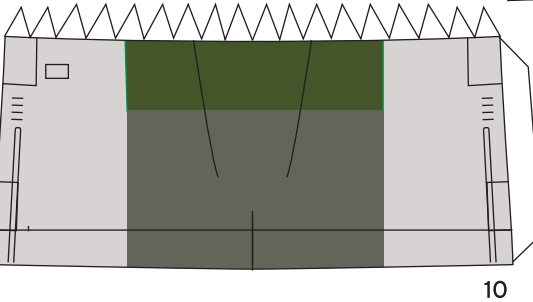
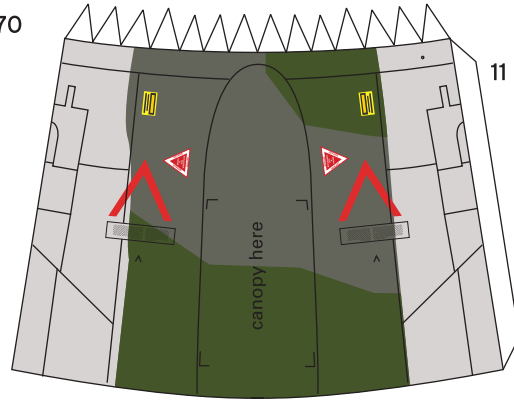
37



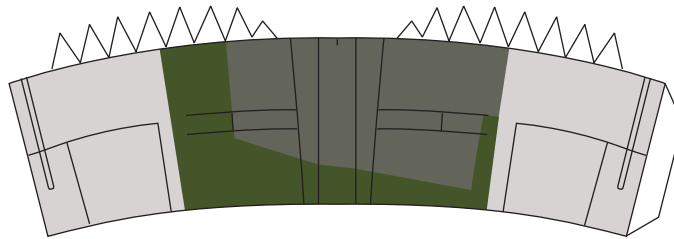
33



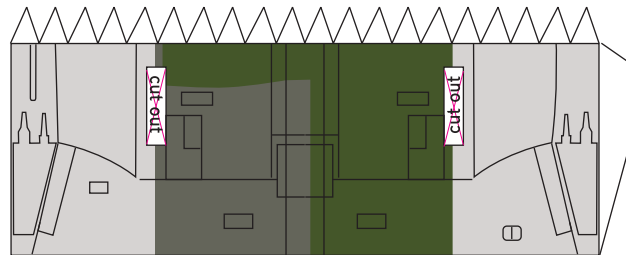
11



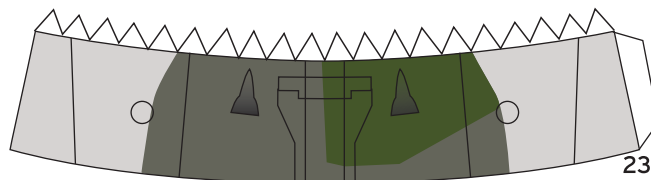
10



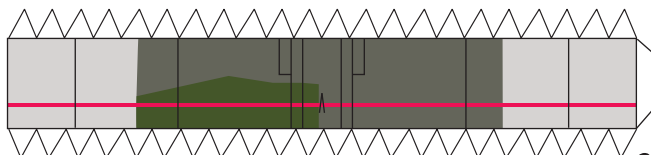
2



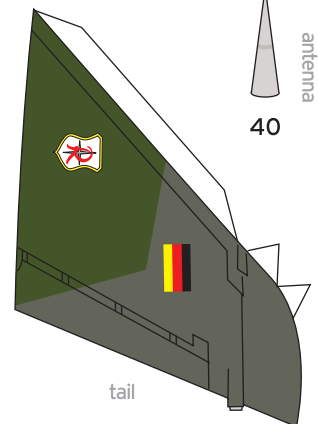
1



23



24



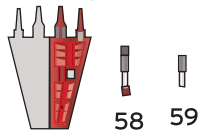
tail

54

antenna

40

belly  
speedbrakes

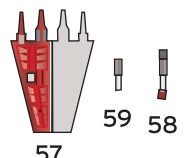


56

58

59

belly  
speedbrake  
inner plate

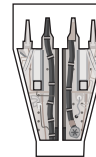


57

59

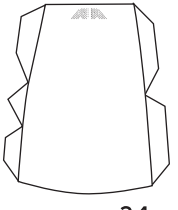
58

4



nose wheel well

12



34

45



spine

spine

44

32

Instructions  
downloaded  
separately!



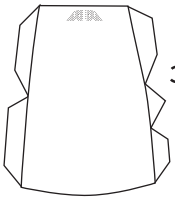
52

canopy

port air intake

36

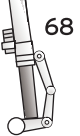
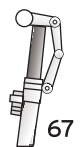
34



nose wheels



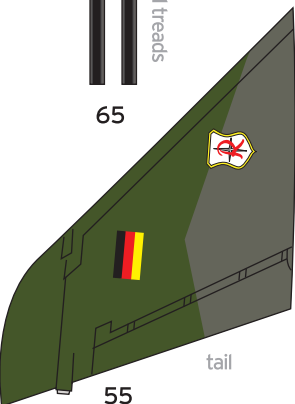
nose landing gear struts



nose wheel treads

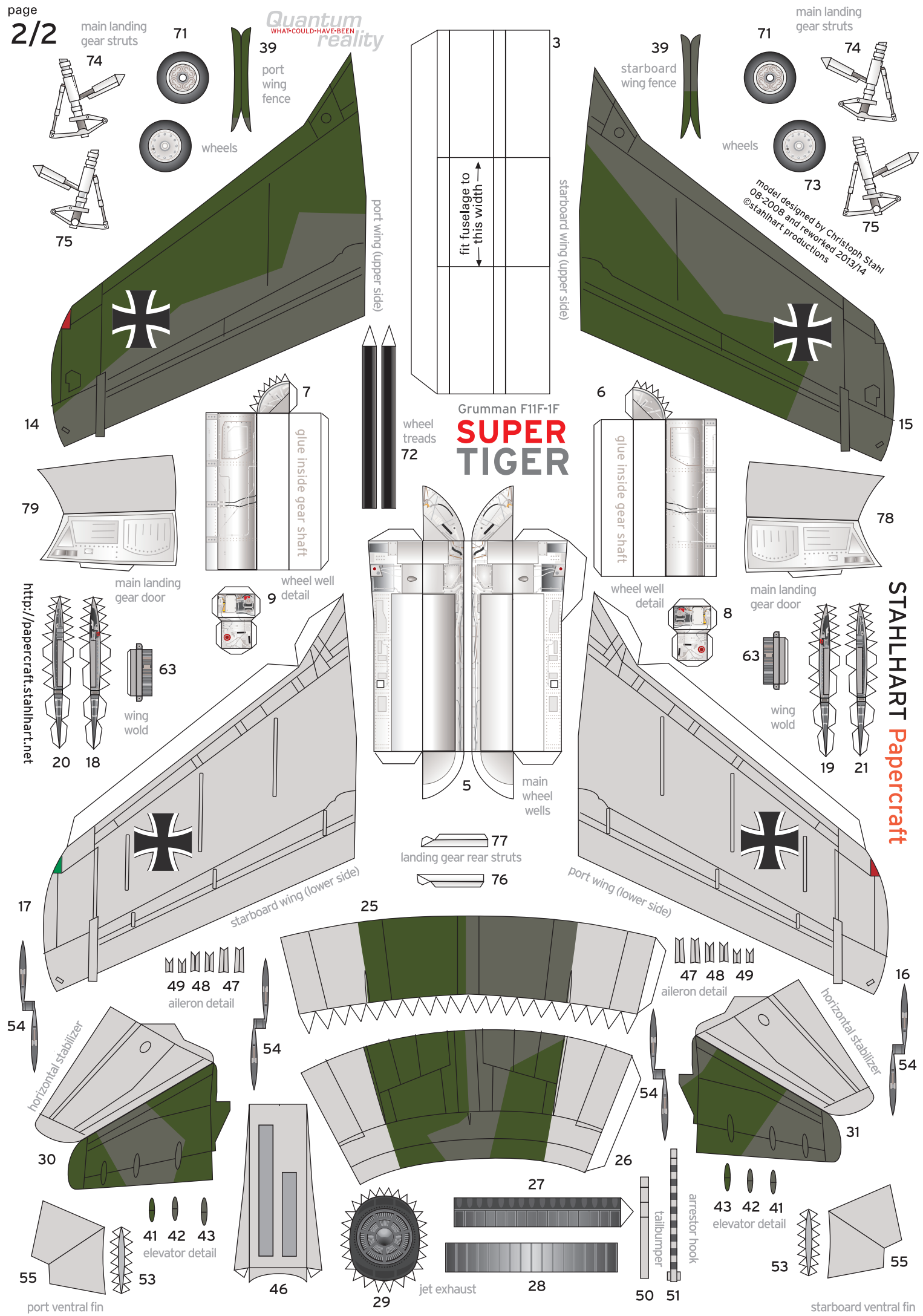


65

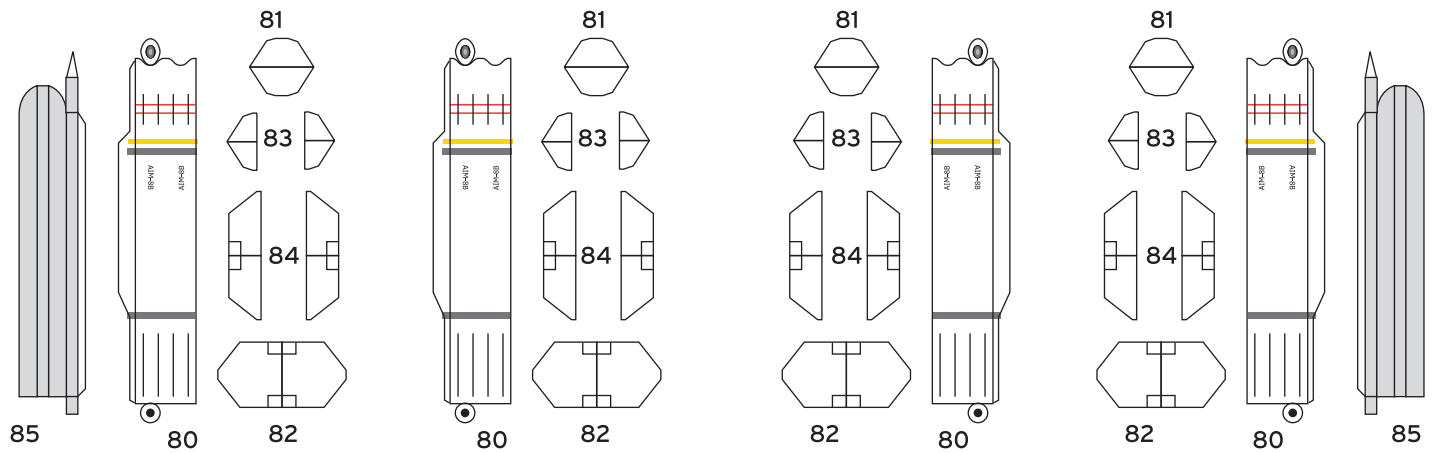


55

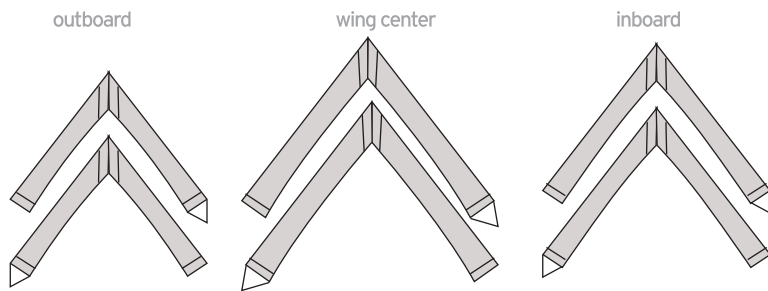
tail



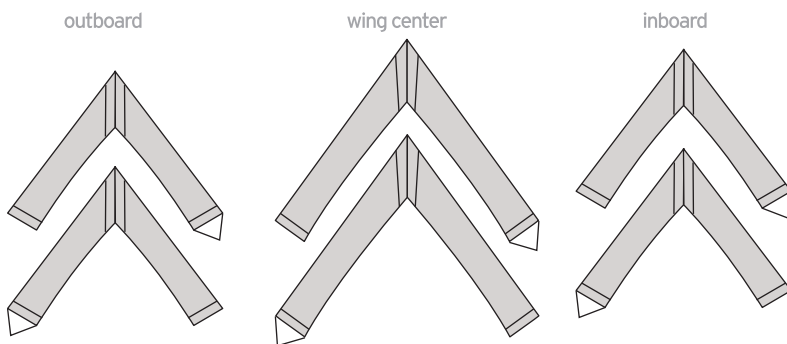
Sidewinder missiles for spine and belly:



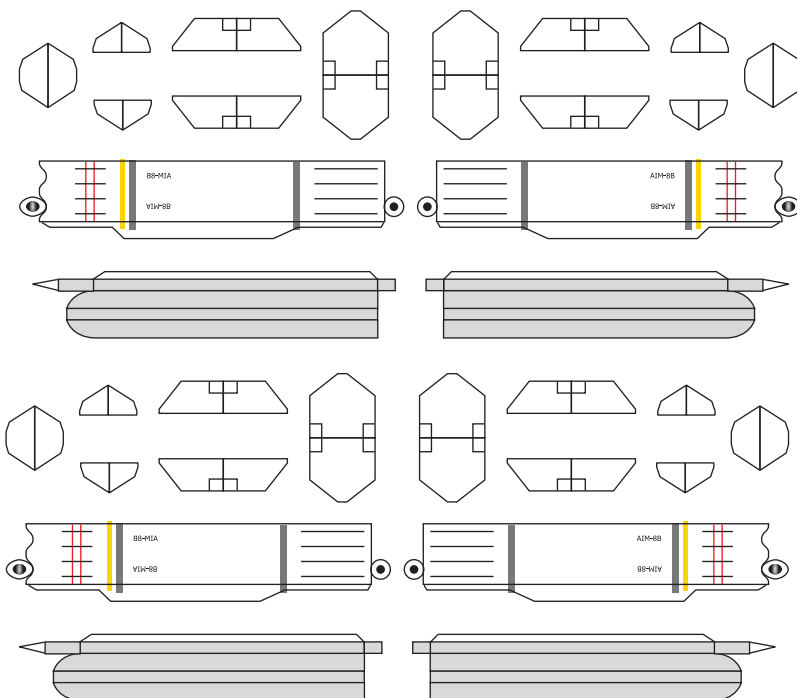
Pylons for carrying Sidewinder missiles



Pylons for other ordnance (Tank etc.)



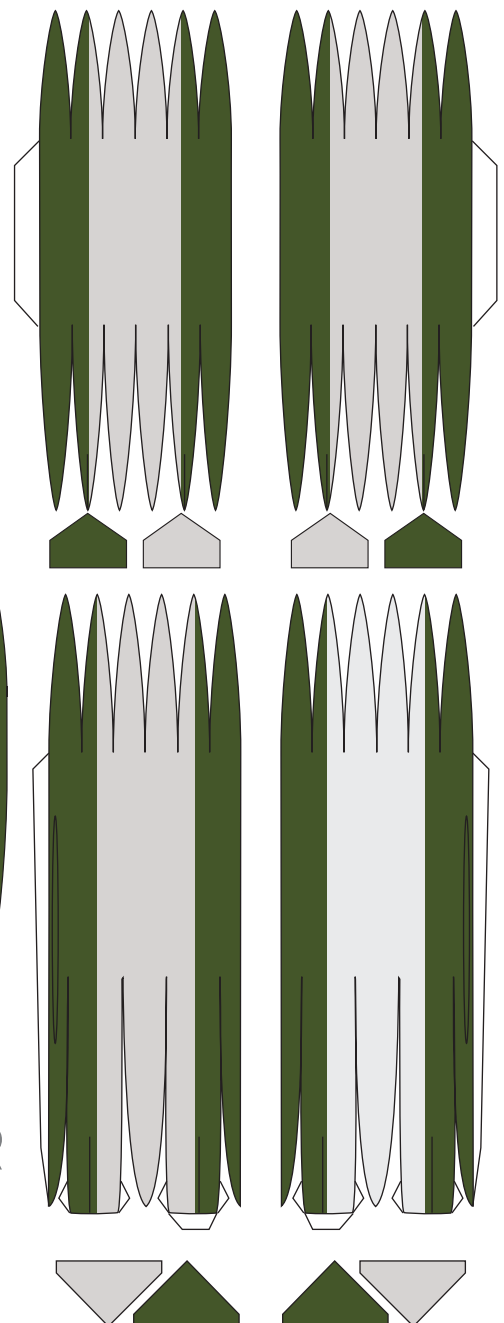
Additional Sidewinders



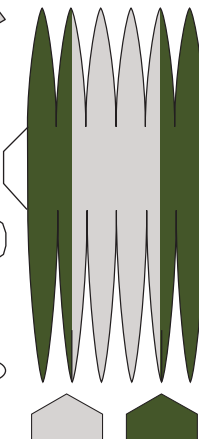
Belly  
pylon



Drop Tanks



Belly  
Drop  
Tank



Grumman F11F-1F  
**SUPER  
TIGER**